



Dovedale Avenue, Eccles

Manchester



In Excess of £300,000

Dovedale Avenue

Eccles, Manchester

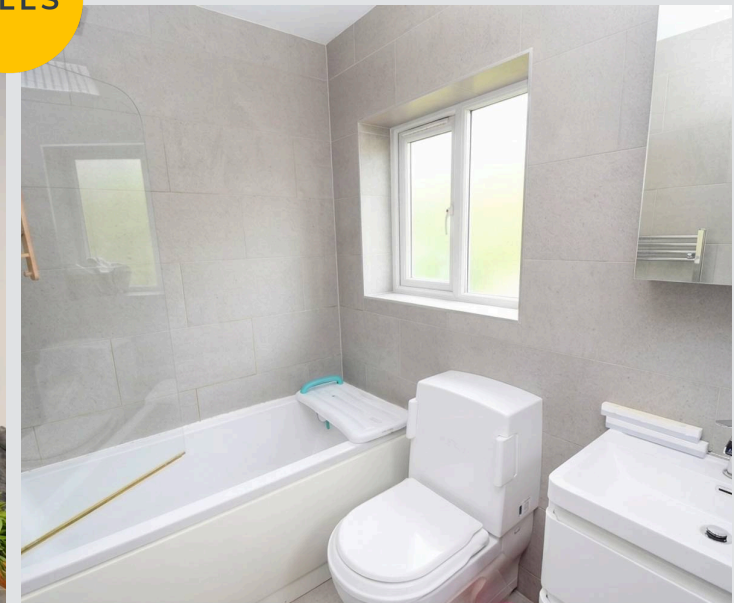
Stunning three-bedroom semi-detached property nestled in a peaceful cul-de-sac in the desirable Ellesmere Park area! Positioned just moments from the lively Monton Village!
Council Tax band: C

Tenure: Freehold

- Spacious bay fronted lounge with built in window seat
- Modern fitted kitchen diner
- Three generous sized bedrooms
- Contemporary three-piece bathroom suite
- Situated in a quiet location, close to excellent transport links, amenities and good local schooling
- Positioned a short stroll to Monton High Street with a great selection of bars, restaurants and amenities
- Generous, south-facing front garden and private sun-drenched rear garden
- Perfect first time buy or family home!
- Viewing is highly recommended!



HILLS



Entrance Hallway

Lounge

13' 11" x 13' 10" (4.25m x 4.21m)

Kitchen / Diner

20' 3" x 10' 4" (6.18m x 3.16m)

Landing

Bedroom One

13' 9" x 11' 1" (4.20m x 3.39m)

Bedroom Two

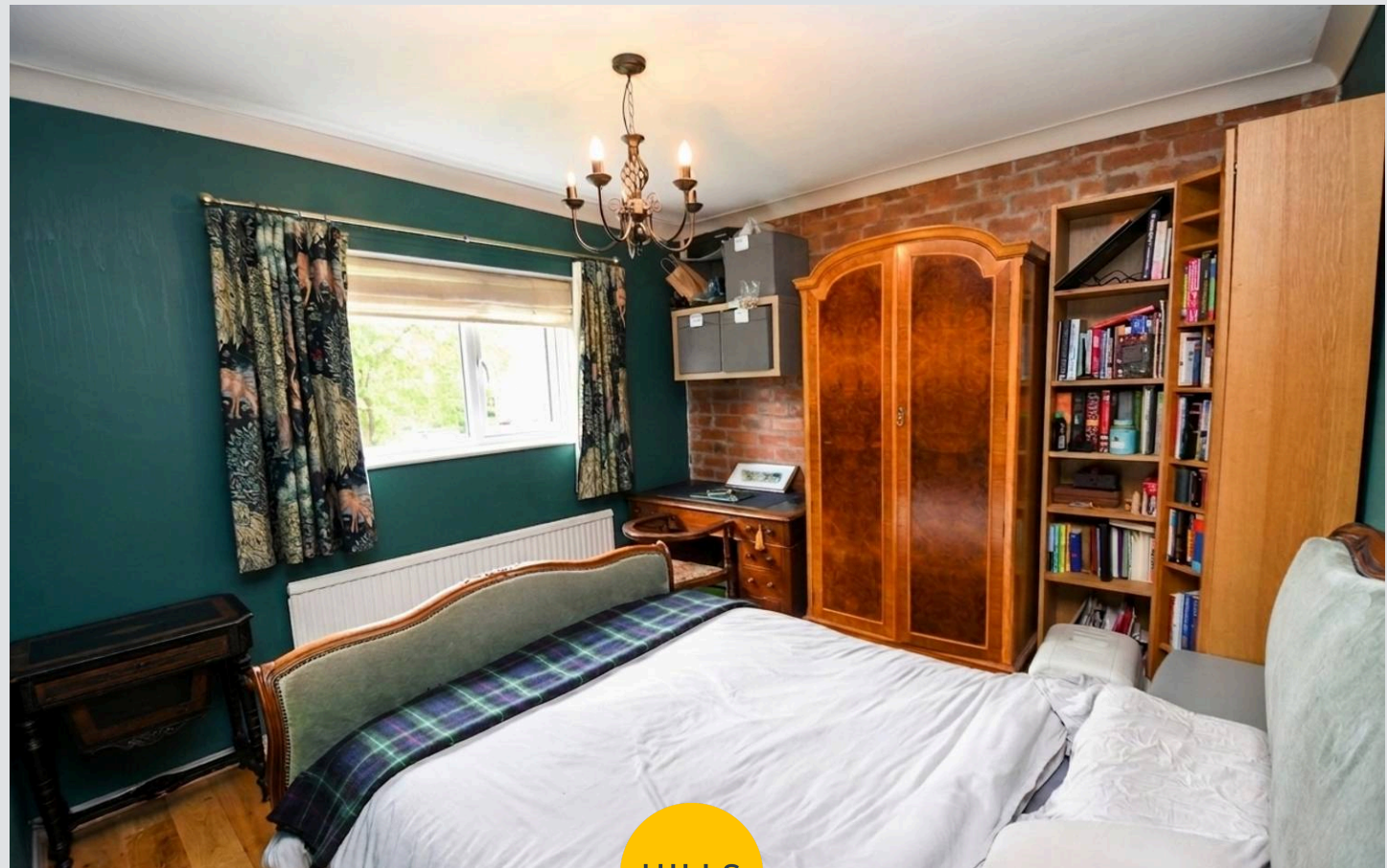
10' 7" x 10' 2" (3.23m x 3.10m)

Bedroom Three

9' 6" x 7' 2" (2.89m x 2.18m)

Bathroom

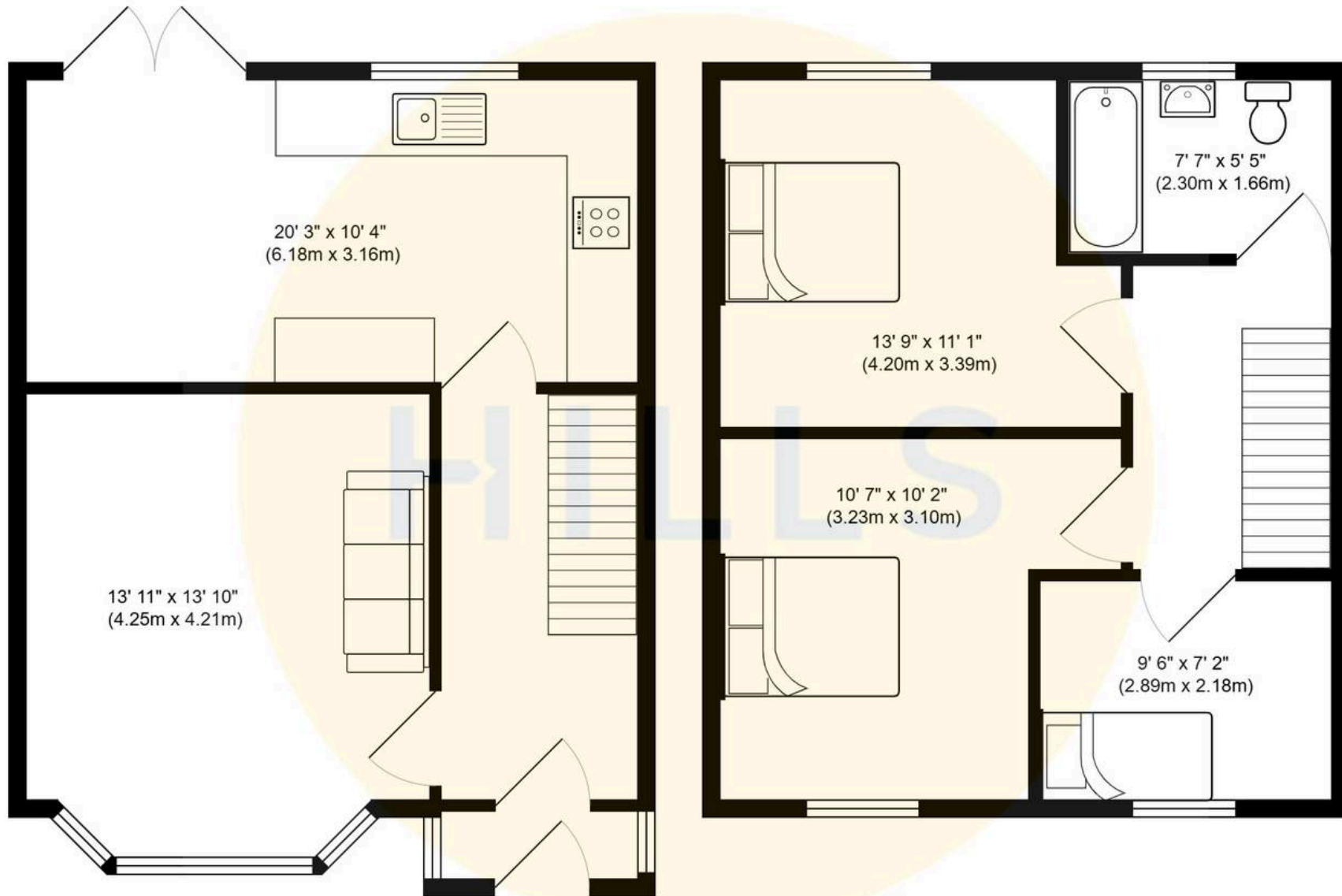
7' 7" x 5' 5" (2.30m x 1.66m)





HILLS





Total Area - 82 square metres



Hills | Salfords Estate Agent

Hills Residential, Sentinel House Albert Street – M30 0SS

0161 707 4900

sales@hills.agency

www.hills.agency/



By law, we are required to conduct anti-money laundering checks on all potential buyers and sellers. In line with HMRC guidelines, our trusted partner, Coadjute, will securely manage these checks on our behalf. A non-refundable fee of £45 + VAT per person will apply, and Coadjute will handle the payment. Once an offer is accepted, Coadjute will send a secure link for you to complete the biometric checks. These checks must be completed before we can send the memorandum of sale to all parties. PLEASE NOTE: The Agent has not tested any equipment, fixtures, fittings or services so cannot verify that they are in working order or fit for the purpose. References to the properties tenure are based on information supplied by the seller. You are advised to check the availability of this property before travelling any distance to view. Every effort has been made to ensure these particulars are correct and not misleading but their accuracy is not guaranteed nor do they form part of any contract.