

This stunning newly-refurbished luxury apartment is located in the affluent community of St Johns Wood. Comprising three En-Suite bedrooms, an open-plan lounge / diner, and a fully fitted modern kitchen, this property is perfect for anyone seeking a quietly elegant lifestyle. The property also benefits from herringbone wood-flooring, air conditioning throughout, as well as off-street parking, 24-hour portorage, and a new 125-year lease to be arranged.

The flat is ideally located for ease of transport into Central London, with Swiss Cottage Underground Station situated just a few minutes walk away, allowing for travel into town in under 25 minutes. Additionally, all the restaurants, shops and services of Hampstead and the surrounding areas are within walking distance of the property.

Boydell Court, London, NW8 6NH

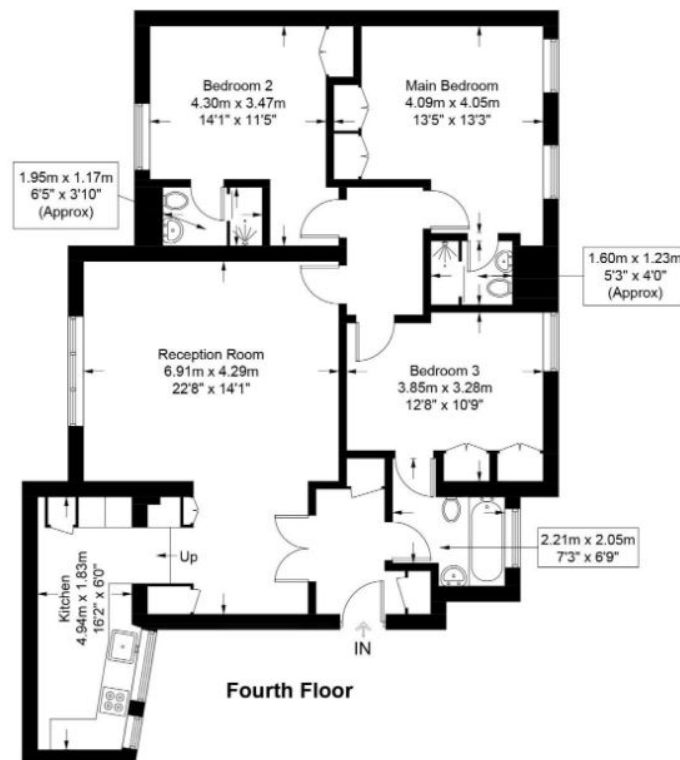
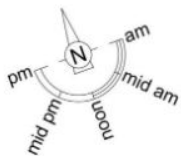
Asking Price £1,695,000 | Leasehold

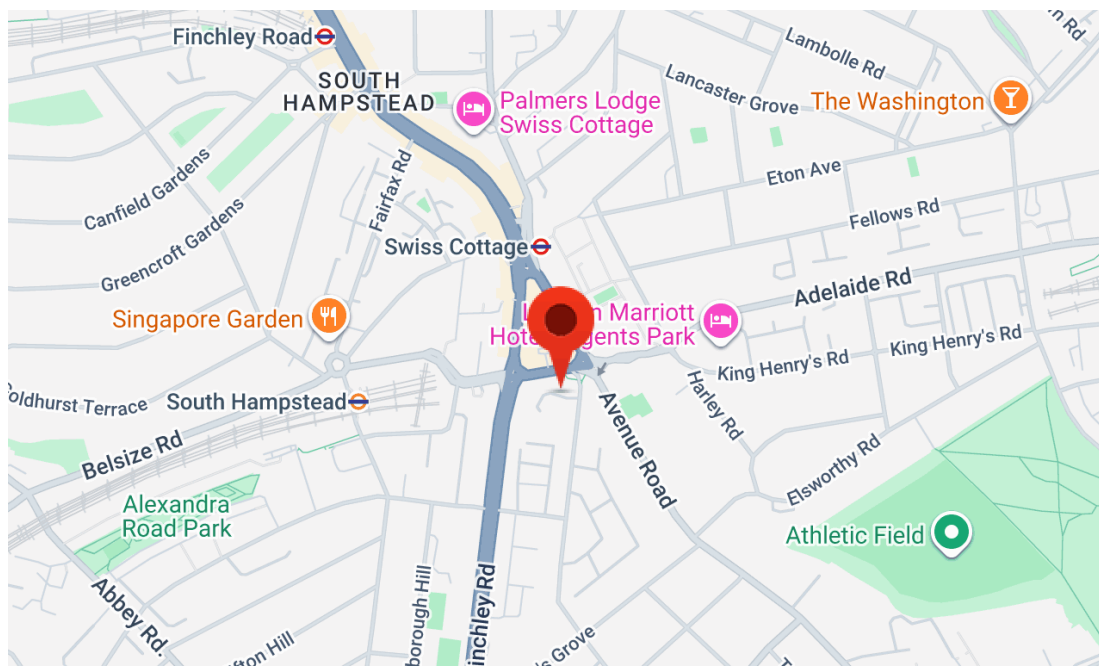
HOBARTS ESTATE AGENTS - LONDON (North)
8 CRESCENT ROAD
Alexandra Park
LONDON N22 7RS

sales@hobartsproperty.co.uk
www.hobartsproperty.co.uk
0208 348 3333



- 3 En-Suite bedrooms
- Off street parking
- Open-plan lounge/diner
- Ideal transport links
- Lift to apartment
- 24-hour portage
- New 125 year lease
- Jubilee line

Boydell Court, NW8**Approximate Gross Internal Area = 1097 sq ft / 101.9 sq m**



Energy Efficiency Rating		Current	Potential
Very energy efficient - lower running costs			
(92+)	A		
(81-91)	B		
(69-80)	C		
(55-68)	D		
(39-54)	E		
(21-38)	F		
(1-20)	G		
Not energy efficient - higher running costs			
England, Scotland & Wales		76	82
		EU Directive 2002/91/EC	

Address: Boydell Court, NW8

Tenure:

Leasehold

Ground Rent:

TBC

Service Charges:

TBC

Viewings:

Strictly by appointment via
HOBARTS ESTATE AGENTS
0208 348 3333

Contact:

8 CRESCENT ROAD, Alexandra
Park, LONDON N22 7RS

sales@hobartsproperty.co.uk
www.hobartsproperty.co.uk

rightmove

PrimeLocation.com

homes24.co.uk

Zoopa.co.uk

propertyfinder.com



These property details, including measurements, floor plans and items depicted in photographs etc. are intended only as a brief guide to prospective purchasers and are not intended to be relied upon for any purpose whatsoever. Any interested party should satisfy themselves by inspection or otherwise as to the correctness of each statement contained in these details.