



9 MEADOW VIEW, DUNMOW ROAD

Great Easton, Dunmow, CM6 2GP

£410,000



COMMERCIAL | RESIDENTIAL | LETTINGS

www.jamesandco.net

- Village Manager
- Restaurant
- Residents Bar
- Garden Maintenance

- Hairdressing
- 24 Hour Emergency Call Alarm System
- Guest Suite
- Residents Library





Property Description

THE PROPERTY

This excellent property is a lovely end of terrace modern cottage with luxury features and fittings through out. The overall floor plan spread over 2 floors is approximately 1,225 sq ft / 113.8 sq m.

A front porch accesses the hallway leading to very spacious ground floor accommodation which includes a large living room that is a real feature of the property as it has a high vaulted-ceiling, lots of natural light, and patio doors to a private, west-facing patio area.

A modern kitchen is situated off the living room. The kitchen has integrated appliances including built-in fridge freezer, second freezer, washing machine, electric hob and eye-level

double oven. It also has 2 windows so is really light with lovely views over the adjoining meadow and landscaped grounds. There is a second double bedroom and shower room on the ground floor off the hallway perfect for guests or for those preferring level access on one floor. Stairs from the hallway access the landing on the second floor. This landing area has 2 storage cupboards and an alcove area for a desk.

The very large master bedroom suite has a spacious bathroom including bath and separate shower cubicle.

The master bedroom has 2 built-in wardrobe cupboards as well as windows to front and back which provide nice views.

The cottage is located in 5 acres of beautiful landscaped

grounds with a parking space available directly in front of the property. The luxury clubhouse is just a short walk on a tarmac path through the grounds which include an ornamental lake, allotment area, croquet lawn and woodland walk. Tenure: Leasehold

PROPERTY INFORMATION

Service Charge: £8,125 per annum

Ground Rent: £300 per annum

Council Tax: £2,120 per annum (Tax Band D)

Lease Length: 117 years remaining

Owners of a Retirement Villages Lease are required to pay an assignment fee on re-sale of the property which is a maximum of 10% of the re-sale price of the property when it is re-sold.

ENTRANCE HALL

GROUND FLOOR SHOWER ROOM

BEDROOM 2

14' x 10' (4.27m x 3.05m)

LIVING AREA

19' 4" x 14' (5.89m x 4.27m)

KITCHEN

10' 8" x 9' (3.25m x 2.74m)

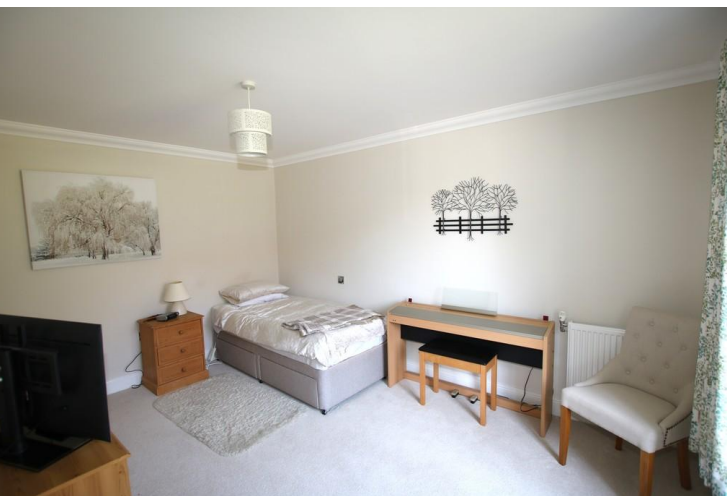
FIRST FLOOR

LANDING

BEDROOM 1

21' 2" x 13' 4" (6.45m x 4.06m)

EN SUITE BATHROOM





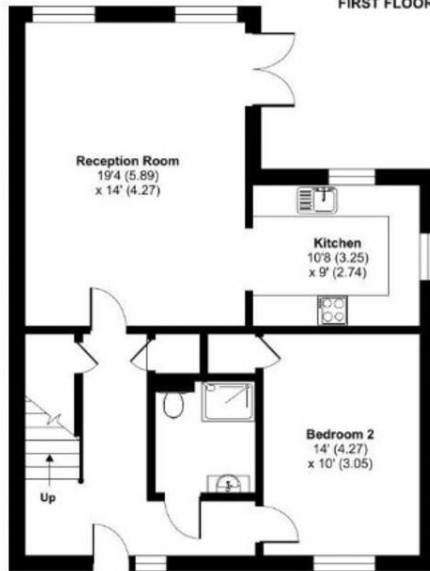
Meadow View, Dunmow Road, Great Easton, Dunmow, CM6

Approximate Area = 1225 sq ft / 113.8 sq m

For identification only - Not to scale



FIRST FLOOR



GROUND FLOOR

COUNCIL TAX BAND

Tax band D

TENURE

Leasehold

LOCAL AUTHORITY

Uttlesford District Council

Agents Note: Whilst every care has been taken to prepare these sales particulars, they are for guidance purposes only. All measurements are approximate are for general guidance purposes only and whilst every care has been taken to ensure their accuracy, they should not be relied upon and potential buyers are advised to recheck the measurements

Score	Energy rating	Current	Potential
92+	A		94 A
81-91	B	85 B	
69-80	C		
55-68	D		
39-54	E		
21-38	F		
1-20	G		



4 Stortford Road, Dunmow, Essex, CM6 1DA

01371 876678

info@jamesandco.net

www.jamesandco.net

