



VILLAGE ESTATES



93 Main Road, Sidcup, Kent DA14 6ND

Tel: 0208 302 1002

www.village-estates.com

Email: sidcup@village-estates.com



NO ONWARD CHAIN
SPACIOUS GARDEN
STUNNING KITCHEN

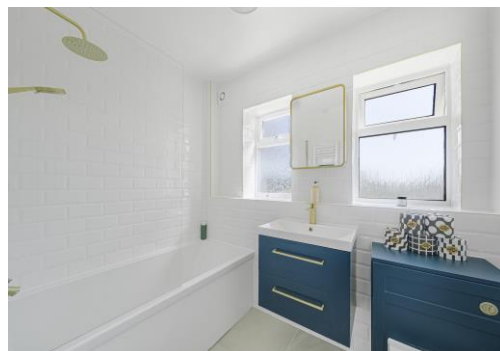
GROUND FLOOR
IMMACULATE CONDITION
THROUGHOUT
MODERN BATHROOM



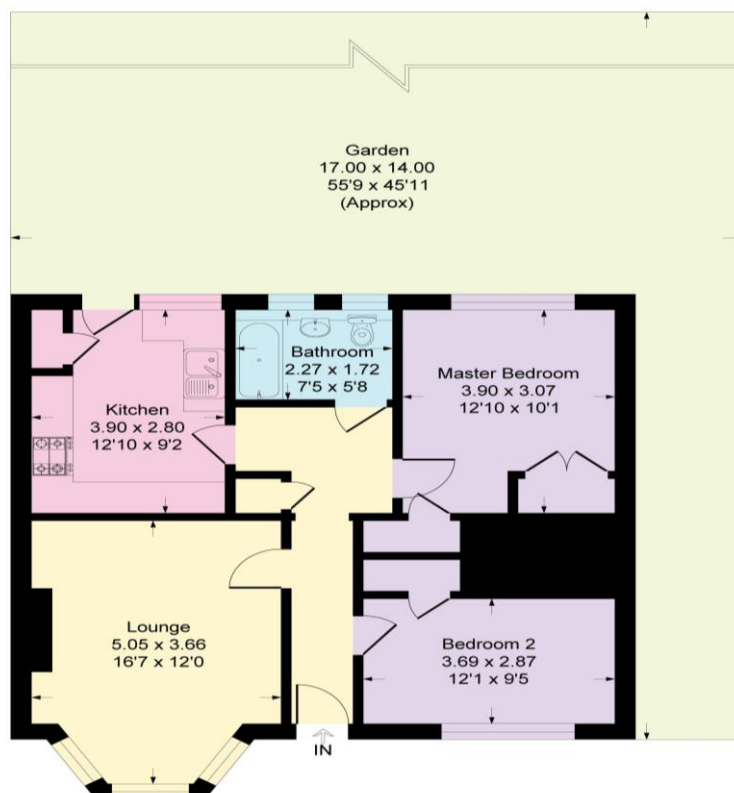
37 Princes Close
Sidcup, DA14 4RH

£350,000

IMMACULATE AND MODERNISED TWO BEDROOM GROUND FLOOR MAISONNETTE, OFFERED WITH NO ONWARD CHAIN! Village Estates are proud to welcome to the market this exceptional property based in a sought-after location. The home boasts a spacious living room, a stunning kitchen and a modern family bathroom. There are two generous double bedrooms, both presented to a very high standard, with ample storage space. There is the benefit of direct access out onto the large garden, providing a fantastic outside space to enjoy. We highly recommend viewing this exceptional home!



Approximate Gross Internal Area = 69.3 sq m / 746 sq ft



CONSUMER PROTECTION FROM UNFAIR TRADING REGULATIONS 2008

Please note that any services, heating system or appliances have not been tested, and no warranty can be given or implied as to their working order. You are advised to obtain verification from your solicitor or surveyor. References to the tenure of a property are based on information supplied by the seller. We have not had sight of the title documents and a buyer is advised to obtain verification from their solicitor. Items shown in photographs are not included unless specifically mentioned within the sales particulars, but may be available by separate negotiation. Whilst every attempt has been made to ensure the accuracy of the floor plan contained here, measurements of doors, windows, rooms and any other items are approximate and no responsibility is taken for any error, omission, or mis-statement. We advise you to book an appointment to view before embarking on any journey to see a property, and check its availability. The accuracy of these details are not guaranteed and they do not form part of the contract.