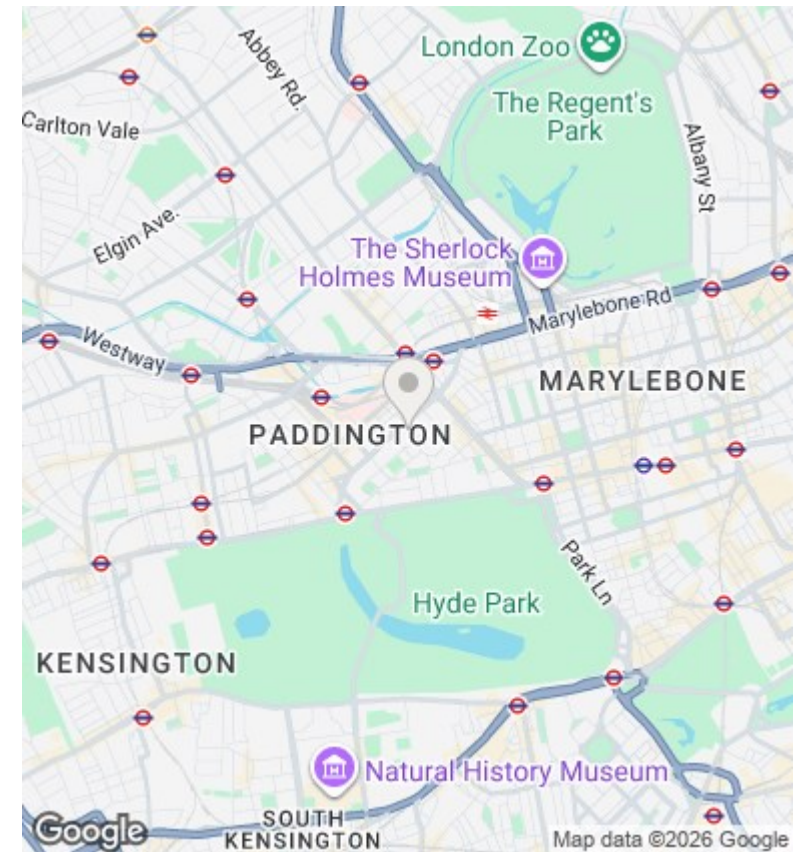
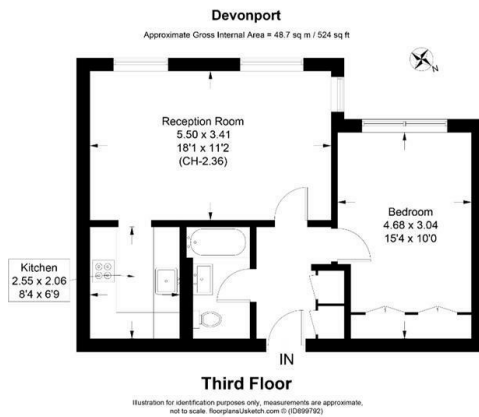




## Devonport, Randor Place, London W2

Asking Price £560,000

- Spacious and Well Proportioned One Bedroom Flat
- Modern Kitchen
- Communal Garden
- Close to Hyde Park, Edgware Road and Oxford Street
- Share of Freehold
- Two Lift Access
- Bright with nice South West views
- Newly Refurbished
- Porter and Disabled access
- Close to Paddington and Edgware Road stations



## Directions

## Viewings

Viewings by arrangement only. Call 02070990800 to make an appointment.

## Council Tax Band

G

## EPC Rating:

E

Energy Efficiency Rating		
	Current	Potential
<i>Very energy efficient - lower running costs</i>		
(92 plus) <b>A</b>		
(81-91) <b>B</b>		
(69-80) <b>C</b>		70
(55-68) <b>D</b>		
(39-54) <b>E</b>	50	
(21-38) <b>F</b>		
(1-20) <b>G</b>		
<i>Not energy efficient - higher running costs</i>		
<b>England &amp; Wales</b>	EU Directive 2002/91/EC	