



FULHAM PALACE ROAD, SW6

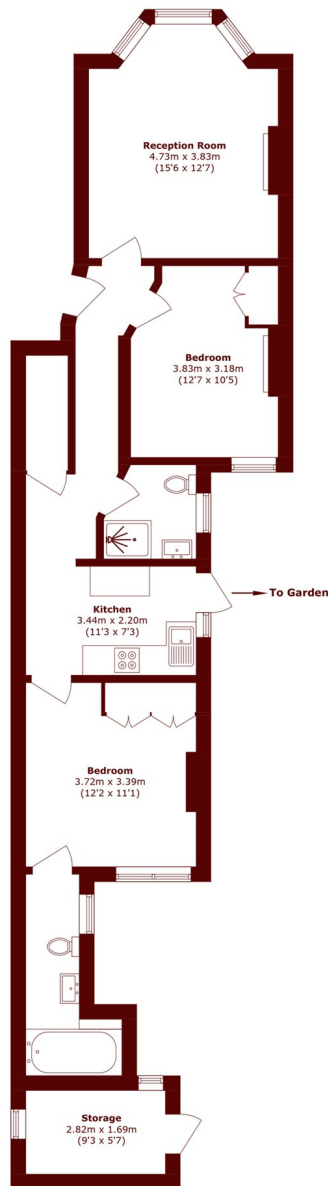
£700,000

This beautiful garden flat comprises two double bedrooms, two bathrooms, one en suite, a very bright and spacious reception room with bay window, high ceilings and feature fire place.

Two double bedrooms
Two bathrooms
Garden

Share of freehold
Potential to extend STPP
No onward chain

STEP INSIDE FULHAM PALACE ROAD



Total area (approx.): 68.7 sq. m (739.4 sq. ft)
External Storage area (approx.): 4.7 sq. m (50.5 sq. ft)

Bishops Park
020 7993 9888

Energy Rating: We aim to make our particulars both accurate and reliable. However, they are not guaranteed; nor do they form part of an offer or contract. If you require clarification on any points then please contact us, especially if you're traveling some distance to view. Please note that appliances and heating systems have not been tested and therefore no warranties can be given as to their good working order

**MARSH &
PARSONS**