



## KIMBERLEY ROAD, NW6

£399,999

South Facing Balcony  
Gated Development  
Excellent Local Amenities  
Lift Access  
Quiet Street  
Good Condition

@marshandparsons  
marshandparsons.co.uk

MARSH &  
PARSONS



# ABOUT THE PROPERTY

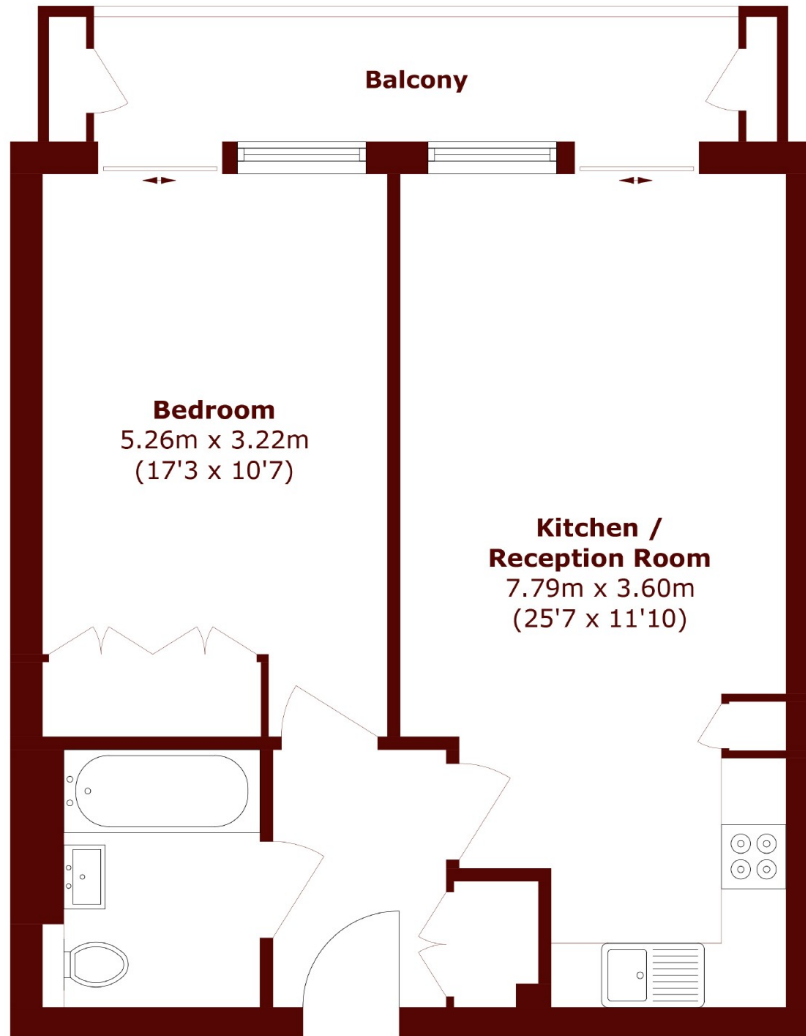
A well presented second floor apartment with a private South facing balcony, set within a secure modern development.

This apartment offers over 600 square feet of bright, open living space and a large south facing balcony. The apartment, served by a passenger lift, comprises a large open plan Kitchen/Reception Room, a spacious double bedroom and modern bathroom. Both the Reception Room & the Bedroom directly access the balcony.

Hooper's Yard is a boutique gated development of 14 apartments, ideally located to the cafes, restaurants and



# STEP INSIDE KIMBERLEY ROAD



Total area (approx.): 54.0 sq. m (581.2 sq. ft)

Balcony area (approx.): 7.9 sq. m (85.0 sq. ft)

**Queen's Park**  
020 7624 4513

Energy Rating: B We aim to make our particulars both accurate and reliable. However, they are not guaranteed; nor do they form part of an offer or contract. If you require clarification on any points then please contact us, especially if you're traveling some distance to view. Please note that appliances and heating systems have not been tested and therefore no warranties can be given as to their good working order

**MARSH &  
PARSONS**