



## LAMPTON ROAD, TW3

£1,400 pcm

This larger-than-average 421 sq/ft second-floor studio apartment features Galliard Homes' premier luxury specifications. Fully furnished to a high standard, the interior boasts real oak engineered flooring, brushed metal finishes, a bespoke designer kitchen with integrated appliances, and a smart open-plan lounge. Residents also benefit from secure video entry and

- Spacious 421 SQFT Studio
- Bespoke Open-Plan Kitchen
- Opposite Hounslow Central Station
- Two Stops to Heathrow Airport

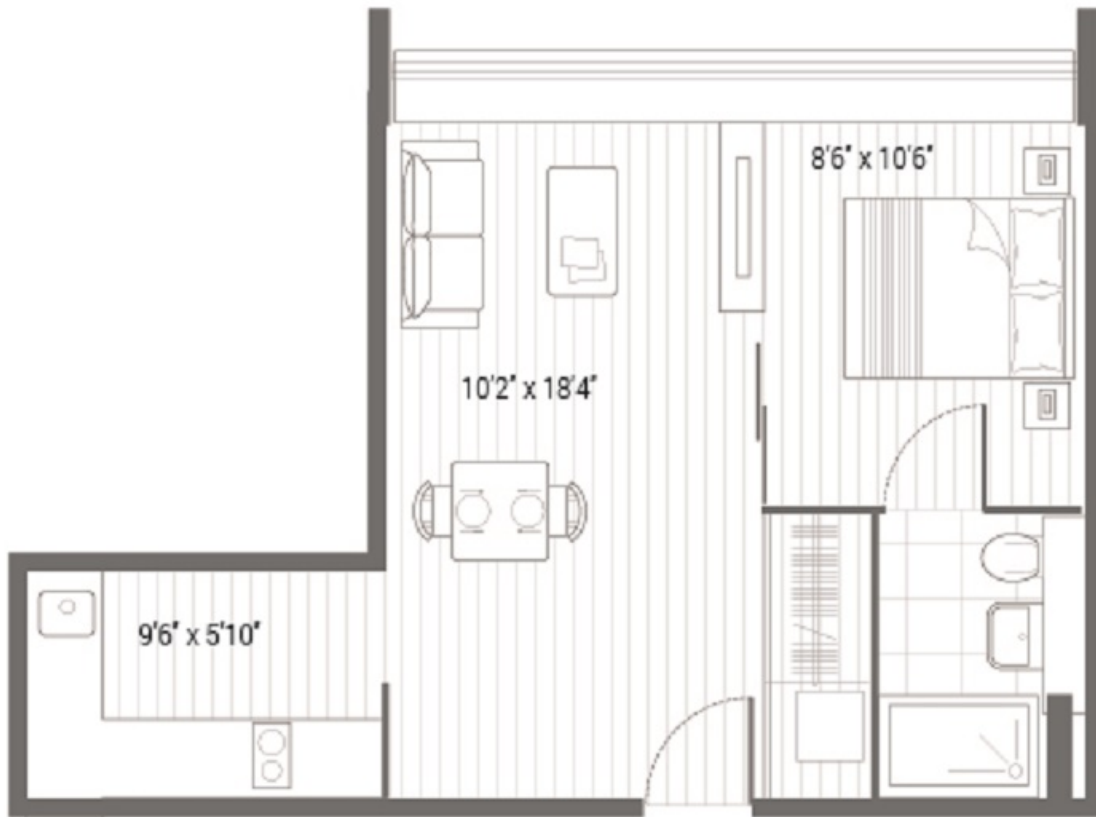


## ABOUT THE HOME

Positioned directly opposite Hounslow Central Station, this development offers unbeatable transport links via the Piccadilly Line, sitting just two stops from Heathrow Airport with direct access to Central London. The property connects easily to the M4 and M25, and provides access to a landscaped communal courtyard, cycle storage, and parking via separate negotiation.







Total area 406 SQ.FT. 37.7 SQ.M.

**LiFE RESIDENTIAL**

203 Trentham Court, Victoria  
Road, London, W3 6BT  
Sales: 020 3668 1112  
Lettings: 020 3668 1111

Energy Rating: C. We aim to make our particulars both accurate and reliable. However they are not guaranteed; nor do they form part of an offer or contract. If you require clarification on any points then please contact us, especially if you're traveling some distance to view. Please note that appliances and heating systems have not been tested and therefore no warranties can be given as to their good working order.