

## Allgood Close Morden, SM4 4PA

Offers In Excess Of £600,000 Freehold

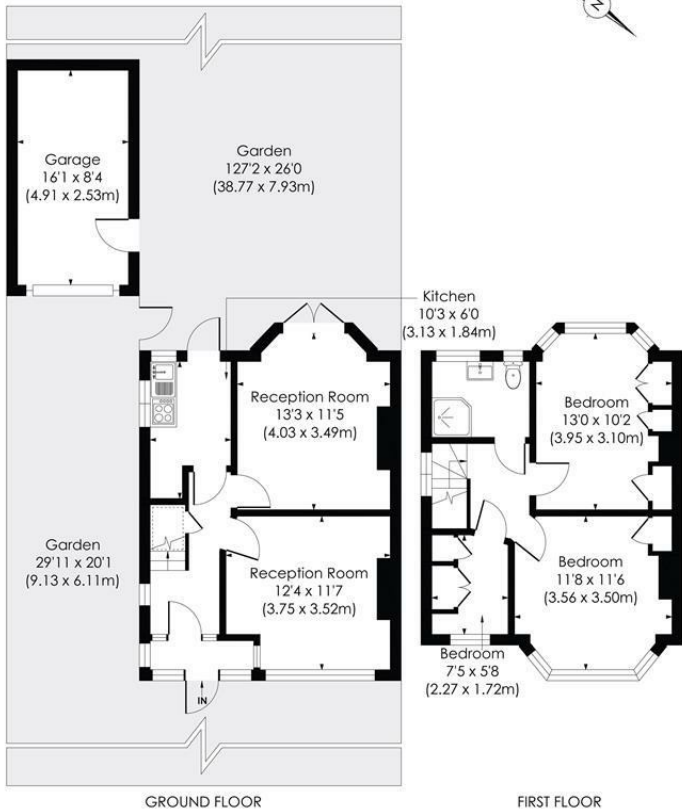


A three-bedroom 1930s semi-detached home located within a quiet cul-de-sac in the sought-after Lower Morden Lane area. The property offers two separate reception rooms, a fitted galley kitchen, and three bedrooms upstairs (two doubles and one single), served by a family bathroom. Externally, the property benefits from a generous rear garden extending to 127ft, along with a garage to the side and off-street parking to the front. The property is presented in dated condition and offers excellent scope for modernisation and extension, subject to the usual permissions. Conveniently located within easy reach of local amenities, schools, and transport links including Morden Underground (Northern Line) and nearby rail stations.

**ALLGOOD CLOSE, SM4**

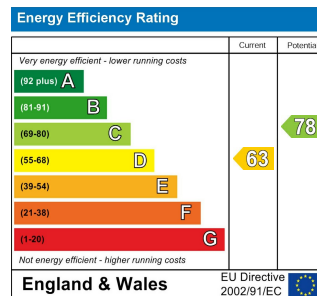
Approx. Gross Internal Floor Area

**839 Sq. ft/77.94 Sq. m**  
(Excluding Garage)



**pixangle** PROPERTY MARKETING  
 This floor plan has been prepared for the purpose of illustration only in accordance with the latest RICS code of measuring practice and is not to scale. All measurements and areas are approximate and whilst every effort has been made to ensure the accuracy of the plan contained here, no responsibility is taken for any error, omission or misstatement.

- Three-Bedroom 1930s Semi-Detached Family Home
- Two Separate Reception Rooms
- Sought-After Lower Morden Lane Area
- Quiet Cul-De-Sac Location
- Off-Street Parking
- Garage To The Side with Extension Potential (STPP)
- Approx. 127ft Rear Garden
- Freehold
- EPC Rating - D
- Merton Council Tax Band - D



**For Free Mortgage Quote and Best Mortgage Rates, call Ellisons Mortgage Advisor on 0208 543 1166**



Although these particulars are believed to be correct, their accuracy is not guaranteed and they do not form part of any contract.

**Celebrating 30 years of successful Sales and Lettings in Merton**

