



## Bramshot Avenue, SE7

### £775,000

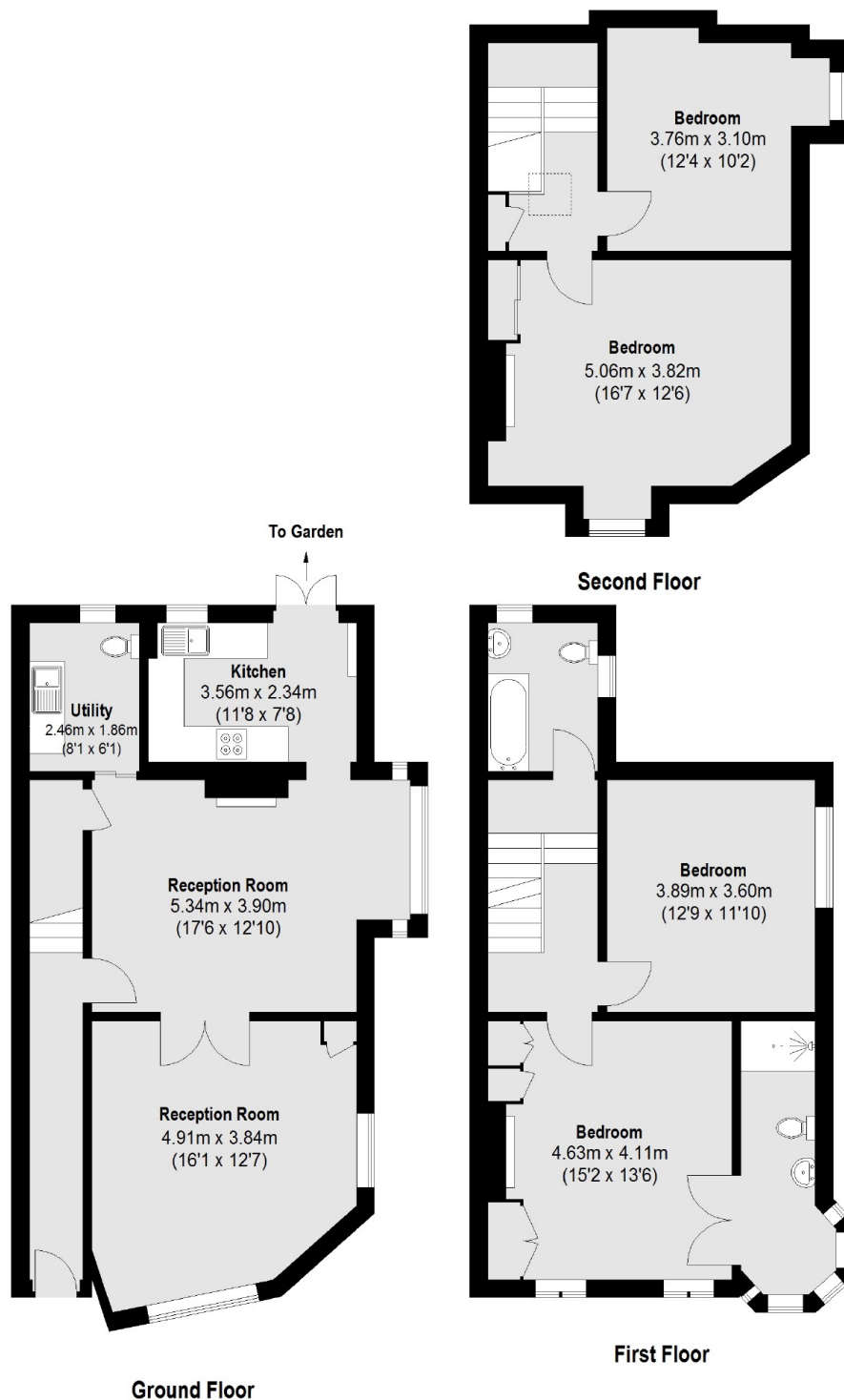
Arranged over three floors, an end of terraced Edwardian house with high ceilings and period features. There are two reception rooms, a kitchen and utility/shower room. There are four double bedrooms and a rear garden with side access.

Situated on the Charlton Slopes, within catchment area of three popular primary schools and an outstanding Secondary school. The property is close to Charlton and Westcombe Park stations, and within easy access of the Jubilee line. Within minutes of Blackheath Royal Standard for its shops and café's and close to Greenwich Royal Park.

### Features

- Four Double Bedrooms
- Two Reception Rooms
- Three Bathrooms
- Large Garden
- Period Features
- No Chain

# Bramshot Avenue, London, SE7



## Dexters

Blackheath  
1 Stratheden Parade  
London  
SE3 7SX  
Sales  
020 8815 2200

Energy Rating: E. We aim to make our particulars both accurate and reliable. However they are not guaranteed; nor do they form part of an offer or contract. If you require clarification on any points then please contact us, especially if you're traveling some distance to view. Please note that appliances and heating systems have not been tested and therefore no warranties can be given as to their good working order.

 **RICS** | Regulated  
Estate Agent  
and Letting Agent

[dexters.co.uk](https://www.dexters.co.uk)