



## WARRINGTON CRESCENT, W9

£1,850,000

Three bedrooms  
Communal Gardens  
Period conversion  
Chain free  
Private Entrance  
Study Area

@marshandparsons  
marshandparsons.co.uk

MARSH &  
PARSONS

# ABOUT THE PROPERTY

A beautifully presented three bedroom, three bathroom garden apartment with a private patio and direct access to the highly sought-after Formosa Gardens, set within a white stucco-fronted period conversion on Warrington Crescent. This spacious lower ground floor home benefits from its own private entrance and features a wide hallway with built-in storage, a study area, and a generous principal bedroom with fitted wardrobes and en suite, alongside two further double bedrooms and two additional bath/shower rooms. A contemporary kitchen and dining space, enhanced by a striking glass extension, flows through to a substantial reception room with floor-to-ceiling doors opening onto the private patio and seamlessly connecting to the beautifully maintained



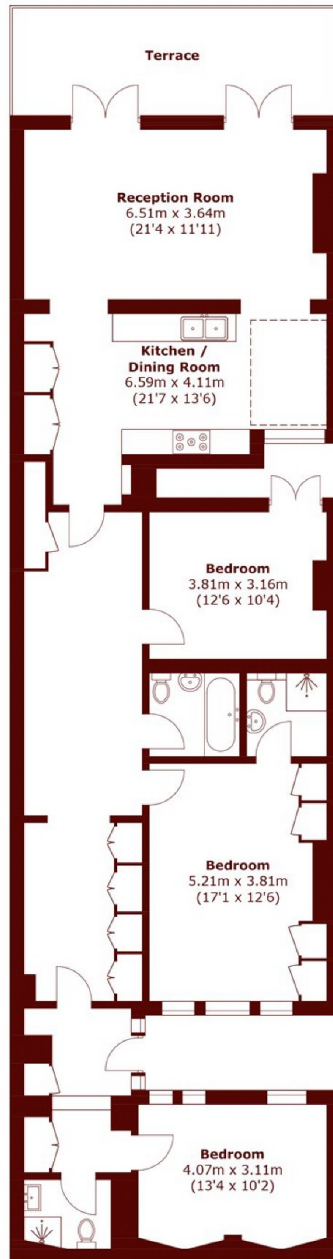




# FURTHER DETAILS



# STEP INSIDE WARRINGTON CRESCENT



Total area (approx.): 141.9 sq. m (1,527.4 sq. ft)  
Terrace : 16.2 sq. m (174.4 sq. ft)

Little Venice  
020 7993 3050

Energy Rating: C We aim to make our particulars both accurate and reliable. However, they are not guaranteed; nor do they form part of an offer or contract. If you require clarification on any points then please contact us, especially if you're traveling some distance to view. Please note that appliances and heating systems have not been tested and therefore no warranties can be given as to their good working order

MARSH &  
PARSONS