



Fulham Road, SW6

£550,000

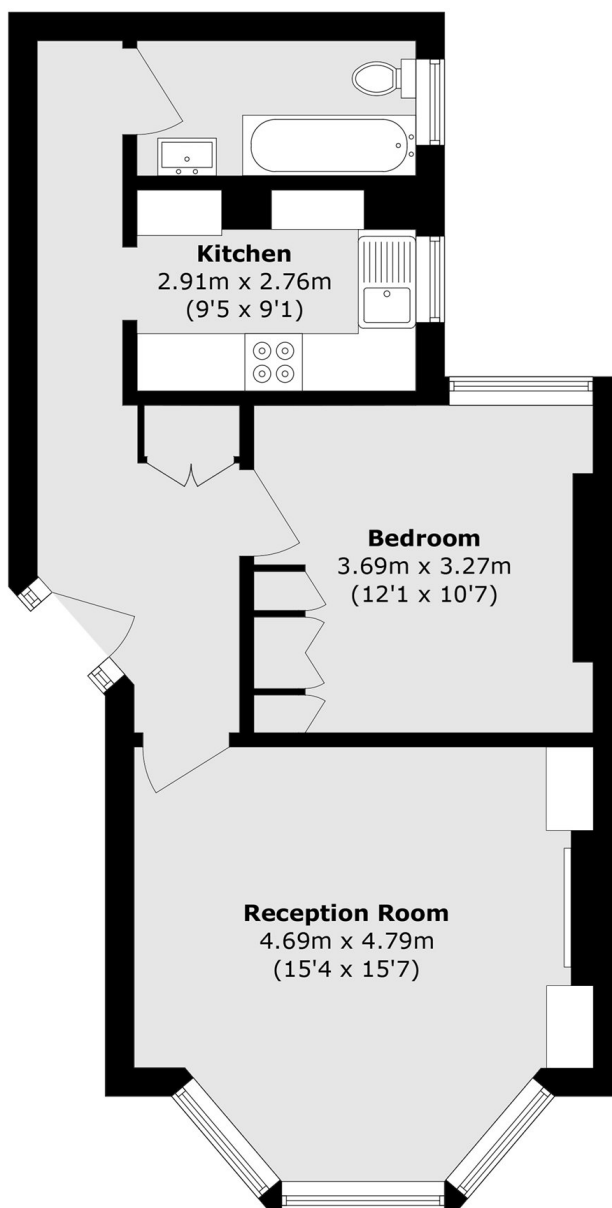
A tastefully presented one bedroom apartment located in this impressive red-brick mansion block, moments away from the River Thames. The property benefits from a large bay-fronted reception, a newly renovated separate kitchen, and communal gardens.

Drive Mansions is a highly sought after mansion block located on Fulham Road, perfectly positioned between Parsons Green and Bishops Park.

Features

- One Bedroom
- Mansion Block
- Stylish Renovation
- Communal Gardens
- Bay-Fronted Reception
- Parsons Green

Fulham Road,
London, SW6



Total area (approx.): 53.8 sq. m (579.1 sq. ft)