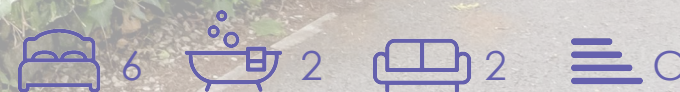




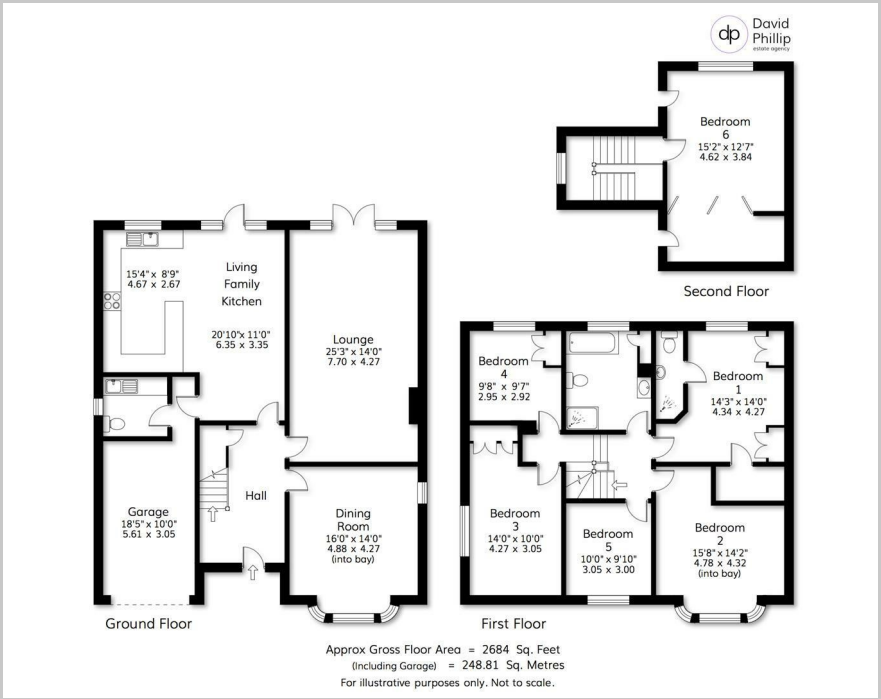
Keppelcove, 10A Wyncroft Grove, Leeds, LS16 9DG

Price Guide £899,950

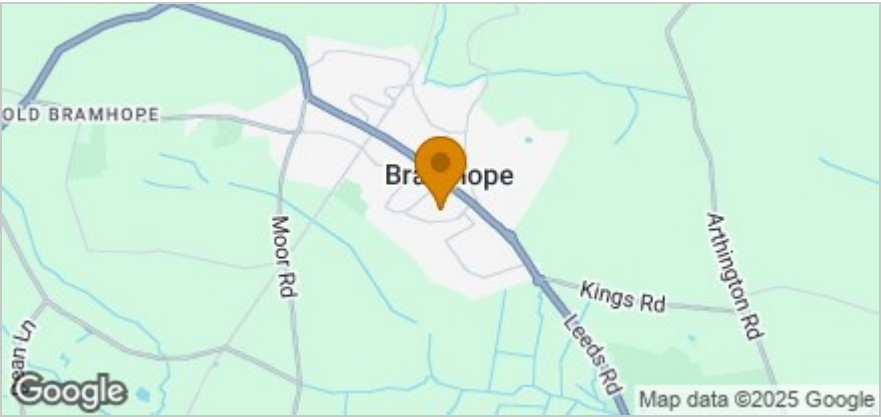




Floor Plan



Area Map



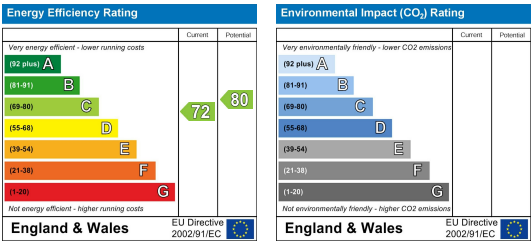
Accommodation

- A Most Attractively Presented Detached Family House
- Offering Six Bedrooms, Two Bathrooms, Flexible Space
- Exclusive Private Sought After Cul-de-Sac Type Location
- Garage, Parking and Private Westerly Facing Rear Garden
- Within Comfortable Reach of Excellent Village Amenities
- Energy Performance Certificate (EPC) Rating C
- Freehold, Leeds City Council Tax Band G

Viewing

Please contact our David Phillip Estate Agents Office on 01134 676 400 if you wish to arrange a viewing appointment for this property or require further information.

Energy Efficiency Graph



These particulars, whilst believed to be accurate are set out as a general outline only for guidance and do not constitute any part of an offer or contract. Intending purchasers should not rely on them as statements of representation of fact, but must satisfy themselves by inspection or otherwise as to their accuracy. No person in this firms employment has the authority to make or give any representation or warranty in respect of the property.