



Tyrwhitt Road, SE4

£325,000

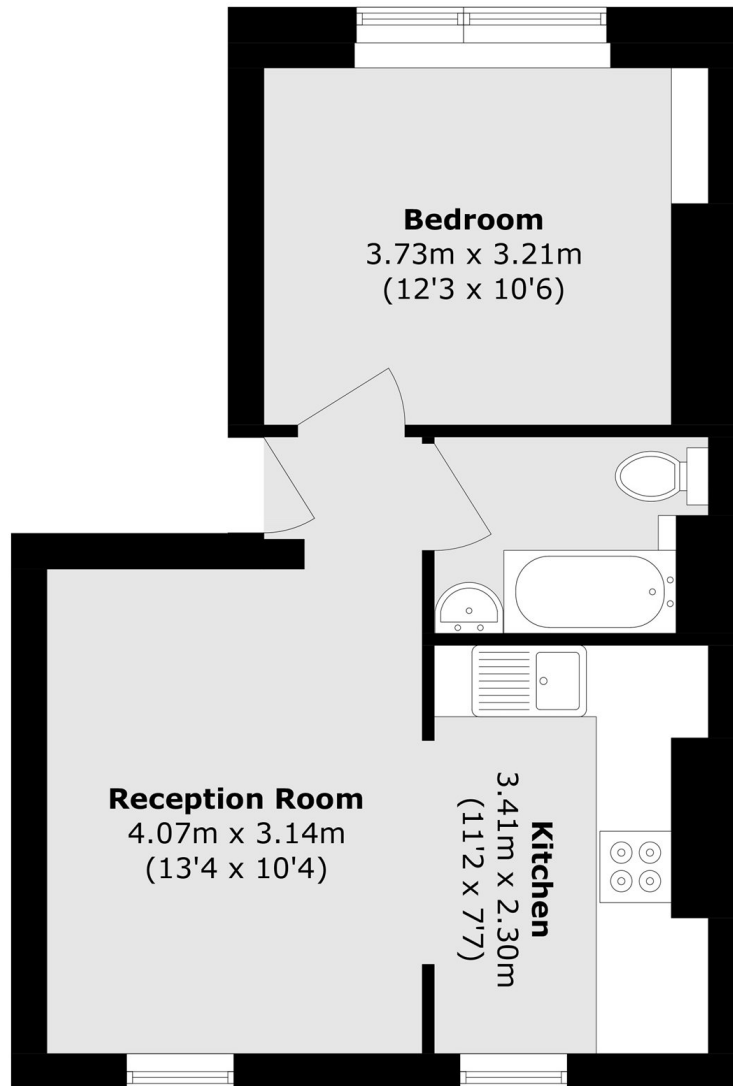
A delightful one bedroom flat in the sought-after Brockley conservation area. This characterful flat has a large double bedroom, a light filled reception room with tall ceilings throughout and is offered to the market chain free.

Tyrwhitt Road is an attractive tree lined street located in the Brockley Conservation area with transport links from Brockley and St Johns Train stations.

Features

- Double Bedroom
- Bright Throughout
- Conservation Area
- Chain Free
- Close To Transport Links
- Close To Hilly Fields

Tyrwhitt Road, London, SE4



Total area (approx.): 39.0 sq. m (419.7 sq. ft)