



£299,950

Bennett Close

Hounslow, TW4 5AE

PROPERTY SUMMARY

SHARE OF FREEHOLD.

A beautifully presented ground floor two bedroom two bathroom apartment in Bennett Close, Hounslow.

The property features a bright open plan reception and kitchen creating a sociable space ideal for both relaxing and entertaining. The kitchen is neatly integrated with good storage and worktop space, while the living area benefits from a comfortable layout and natural light.

There are two good sized bedrooms, including a principal bedroom with en-suite, alongside a separate modern bathroom.

Further benefits include an allocated parking space, access to communal gardens and the added advantage of a share of freehold.

Positioned within easy reach of local shops and everyday amenities, the property is also well located for transport links, making it a practical choice for commuters.

Tenure: Share Of Freehold - 129 Years

Annual Ground Rent: Nil

Annual Service Charge: £1,462.72

2



2

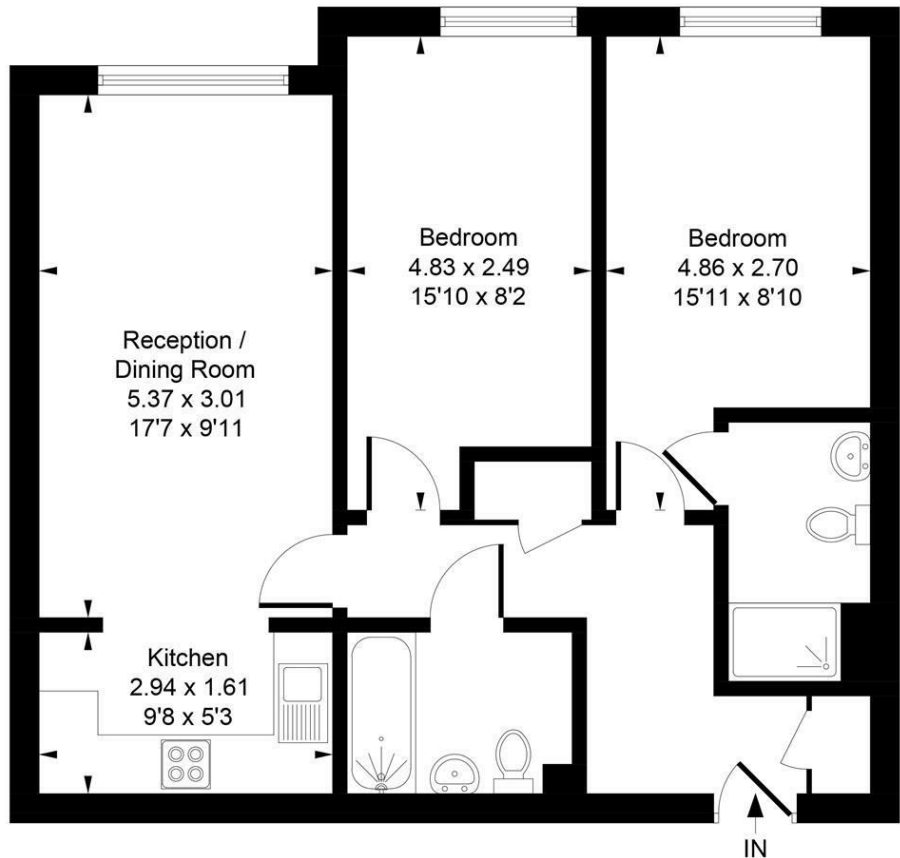


1





Approximate Gross Internal Area
64.15 sq m / 691 sq ft



Whilst every attempt has been made to ensure the accuracy of the floor plan contained here, measurements of doors, windows, rooms and any other items are approximate and no responsibility is taken for any error, omission, or mis-statement. This plan is for illustrative purposes only and should be used as such by any prospective purchase.

© Vizion Property Marketing Produced for Shaw & Co.

LOCAL AUTHORITY

Hounslow

TENURE

Leasehold - Share of Freehold

COUNCIL TAX BAND

C

VIEWINGS

By prior appointment only

Energy Efficiency Rating		
	Current	Potential
Very energy efficient - lower running costs		
(92 plus) A		
(81-91) B		
(69-80) C	78	80
(55-68) D		
(39-54) E		
(21-38) F		
(1-20) G		
Not energy efficient - higher running costs		
England & Wales	EU Directive 2002/91/EC	



Agents Note: Whilst every care has been taken to prepare these particulars, they are for guidance purposes only. All measurements are approximate and are for general guidance purposes only and whilst every care has been taken to ensure their accuracy, they should not be relied upon and potential buyers/tenants are advised to recheck the measurements

Shaw & Co
ESTATE AGENTS

OFFICE ADDRESS
10 Central Parade
New Heston Road
Heston
Middlesex
TW5 0LJ

OFFICE DETAILS
0208 570 7258
heston@shawandcoestates.com