



Llantrisant Road, £270,000

- Three Bedroom Semi-Detached House
- Driveway & Garage
- Private Rear Garden
- Modern Throughout
- Utility & WC
- Countryside Views
- New Roof Completed in November 2024
- EPC Rating: D



 3  1  1



About the property

Presenting this beautifully renovated three-bedroom semi-detached home, ideally located on the highly sought-after Llantrisant Road in Beddau. Offering stylish and well-maintained accommodation throughout, this property is perfect for those seeking a move-in-ready home in a convenient and desirable location. Including a new roof added in November 2024.

The ground floor boasts a spacious lounge/diner, providing a versatile and inviting setting for both everyday living and entertaining. To the rear, the addition of an impressive orangery creates a stunning focal point, flooding the space with natural light while offering lovely views over the surrounding countryside. The well-designed layout is further enhanced by a practical utility area with WC, adding convenience and functionality to the home.

Upstairs, the property features three bedrooms, all well-proportioned and ideal for family living. These are served by a modern family bathroom, completed to a high standard.

Externally, the home continues to impress with a private rear garden, perfect for relaxing or entertaining, while making the most of the peaceful outlook. To the front, a driveway provides off-road parking for multiple vehicles and leads to a garage, offering additional storage or parking space.

Situated in a prime position close to a range of shops, well-regarded schools, and local amenities, this superb home combines modern living with excellent convenience, making it an ideal first time buy or family home.

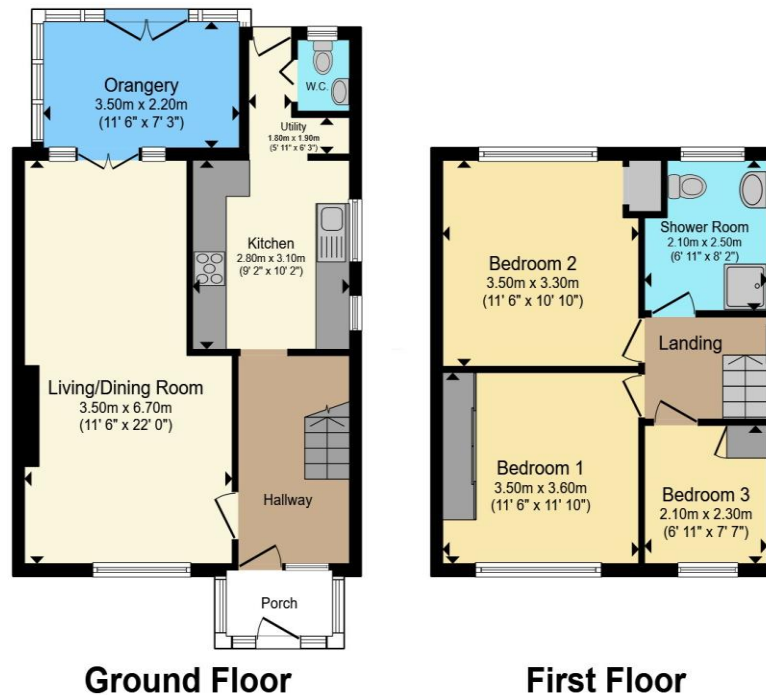


Accommodation

01443 222851

talbotgreen@peteralan.co.uk

Floorplan



Ground Floor

First Floor

Total floor area 89.7 m² (965 sq.ft.) approx

This floor plan is for illustrative purposes only. It is not drawn to scale. Any measurements, floor areas (including any total floor area), openings and orientation are approximate. No details are guaranteed, they cannot be relied upon for any purpose and they do not form part of any agreement. No liability is taken for any error, omission or misstatement. A party must rely upon its own inspection(s). Powered by www.propertybox.io



Important Information

Note while we endeavour to make our sales details accurate and reliable, if there is any point which is of particular interest to you, please contact the office and we will be pleased to confirm the position for you. We have not personally tested any apparatus, equipment, fixtures, fittings or services and cannot verify they are in working order or fit for their purposes. Nothing in these particulars is intended to indicate that carpets or curtains, furnishings or fittings, electrical goods (whether wired or not). Gas fires or light fittings or any other fixtures not expressly included form part of the property offered for sale. This computer generated Floorplan, if applicable, is intended as a general guide to the layout and design of the property. It is not to scale and should not be relied upon for dimensions. Tenure: We cannot confirm the tenure of the property as we have not had access to the legal documents. The buyer is advised to obtain verification from their solicitor or surveyor.

Peter Alan Limited is registered in England and Wales under company number 2073153, Registered Office is Cumbria House, 16-20 Hockliffe Street, Leighton Buzzard, Bedfordshire, LU7 1GN. VAT Registration Number is 500 2481 05. For activities relating to regulated mortgages and non-investment insurance contracts, Peter Alan Limited is an appointed representative of Connells Limited which is authorised and regulated by the Financial Conduct Authority. Connells Limited's Financial Services Register number is 302221. Most buy-to-let

