



3  1  1 

Steynning Close, Corby

Offers over £190,000 Freehold

# BELVOIR!

EPC Rating C. Council Tax A.



This three-bedroom semi-detached residence offers comfortable & versatile accommodation, ideal for a range of buyers.

The ground floor features a spacious living room with French doors opening directly onto the rear garden, creating a bright & welcoming space for both everyday living and entertaining. The kitchen provides ample cupboards & generous work surfaces perfect for any amateur cook, providing space for several appliances as well as an inset American-style fridge/freezer.

To the first floor are three well-proportioned bedrooms, all served by a fully tiled family bathroom.

Externally, the property benefits from an enclosed rear garden, mainly laid to lawn, offering a pleasant and private outdoor space. Communal parking is also available.

The property is offered to the market with no onward chain, making for a straightforward purchase.



### Entrance Hall

Double glazed door to front, laminate to flooring, stairs rising to first floor, ceiling light.

### Cloakroom

1.85m x 0.83m (6'1" x 2'8")

Double glazed window to front, concealed low level WC, wash hand basin set into vanity unit, laminate to flooring, ceiling light, radiator.

### Kitchen

4.8m x 4.41m (15'8" x 14'6")

Double glazed door opening onto garden, double glazed windows to front & back. Kitchen comprising of wall & base units, composite work surfaces over, freestanding cooker, stainless steel sink with drainer, inset American style fridge/freezer, space for washing machine, space for additional appliance, laminate to flooring, ceiling light, radiator.



### Living Room

4.84m x 3.57m (15'11" x 11'8")

Double glazed French doors opening onto garden, double glazed full length windows to rear, laminate to flooring, ceiling light, radiator.

### First Floor Landing

Double glazed window to side, laminate to flooring, storage cupboard, ceiling light.

### Bedroom One

4.8m x 3.22m (15'8" x 10'7")

Double glazed window to rear, laminate to flooring, radiator, ceiling light.

### Bedroom Two

3.57m x 2.69m (11'8" x 8'10")

Double glazed window to rear, laminate to flooring, radiator, ceiling light.

### Bedroom Three

3.58m x 2.09m (11'8" x 6'11")

Double glazed window to rear, laminate to flooring, radiator, ceiling light.



### Bathroom

1.95m x 1.67m (6'5" x 5'6")

Double glazed window to front, panelled bath with shower telephone attachment, low level WC, pedestal wash hand basin, fully tiled walls, heated towel rail, tiled flooring, ceiling light.

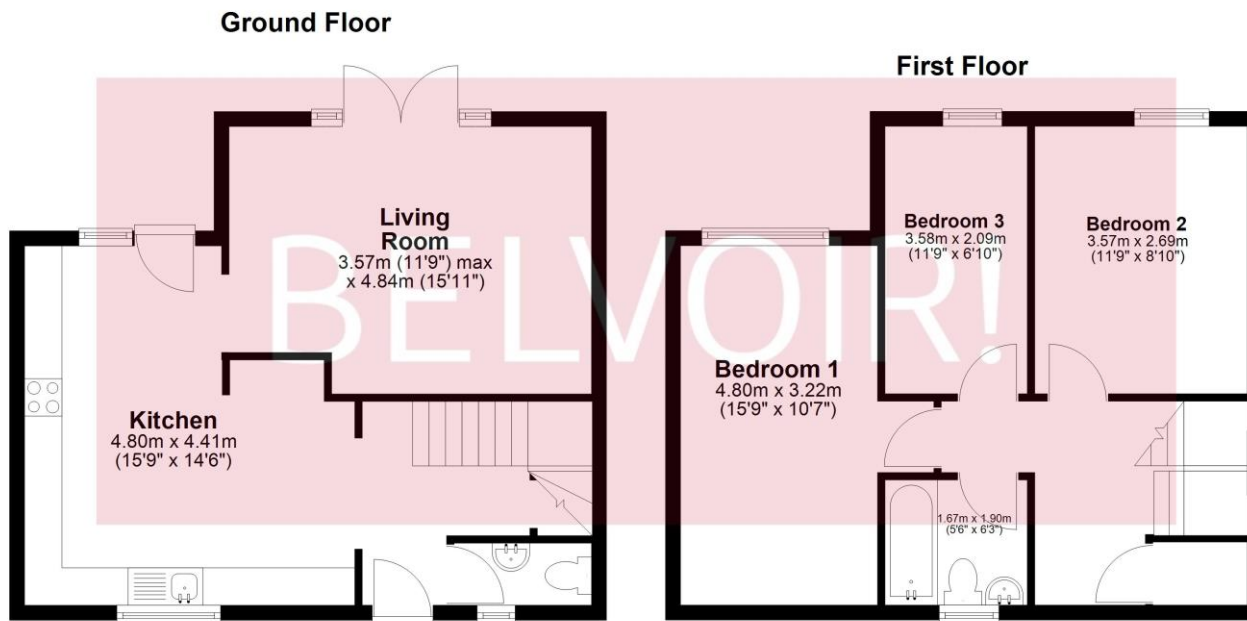
### External

Enclosed rear garden, mainly laid to lawn, slabbed patio.

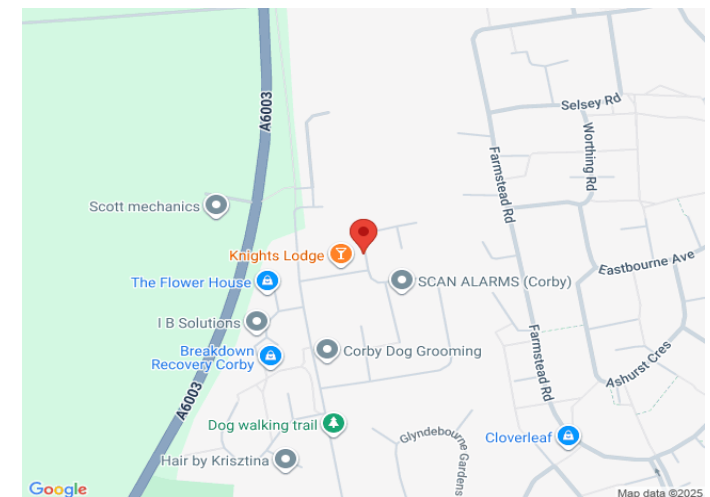
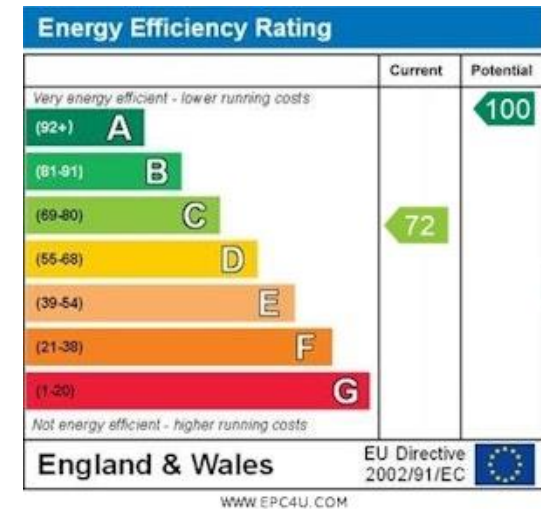
### Agents Notes

Sold as seen.

Whilst every care has been taken to prepare these sales particulars, they are for guidance purposes only. All measurements are approximate, are for general guidance purposes only and whilst every care has been taken to ensure their accuracy, they should not be relied upon and potential buyers are advised to recheck the measurements.



We endeavour to make our sales particulars accurate and reliable, however, they do not constitute or form part of an offer or any contract and none is to be relied upon as statements of representation or fact. Any service, system and appliances listed in this specification have not been tested by us and no guarantee as to their operating ability or efficiency is given. All measurements have been taken as a guide to prospective buyers only, and are not precise. If you require clarification or further information on any points, please contact us, especially if you are travelling some distance to view. Fixture and fittings other than those mentioned are to be agreed with the seller by separate negotiation.  
Plan produced using PlanUp.



Contact us today to arrange a viewing...

# BELVOIR!