

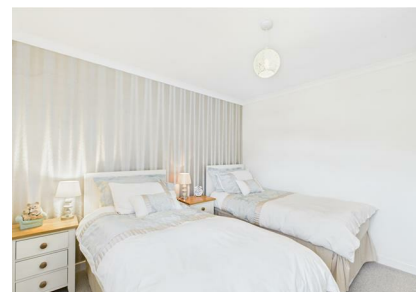


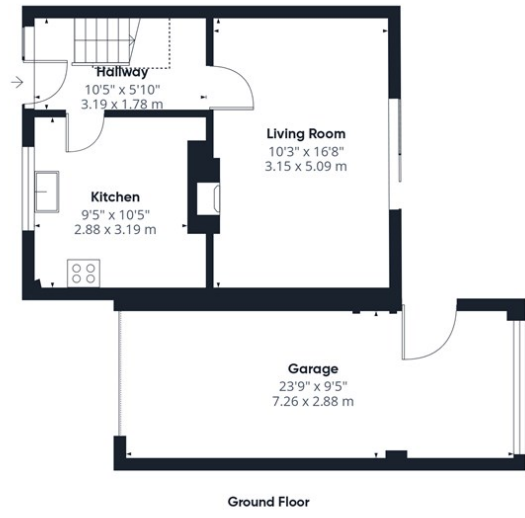
Bury Road, Thetford, Norfolk, IP24 3DL

Rent - £230,000

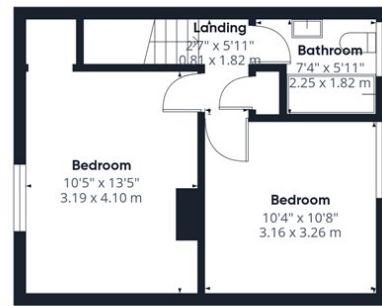
This two bedroom semi-detached home is situated on a larger than average plot with convenient access to Bury St Edmunds, the town centre and Barnham Common. Will this make your viewing shortlist?

- TWO BEDROOM SEMI-DETACHED HOME
- IDEAL FIRST TIME PURCHASE
- MODERNISED THROUGHOUT
- LARGER THAN AVERAGE REAR GARDEN
- WORKSHOP TO THE REAR OF THE GARAGE
- CONVENIENT ACCESS TO BURY ST. EDMUNDS
- CLOSE TO RIVER WALKS & BARNHAM COMMON
- GARAGE & DRIVEWAY PARKING
- INTEGRATED KITCHEN APPLIANCES
- VIEWINGS HIGHLY ADVISED!





Ground Floor



Floor 1

Approximate total area⁽¹⁾

893 ft²
82.8 m²

Reduced headroom

13 ft²
1.2 m²

(1) Excluding balconies and terraces

Reduced headroom
..... Below 5 ft/1.5 m

Calculations reference the RICS IPMS 3C standard. Measurements are approximate and not to scale. This floor plan is intended for illustration only.

GIRAFFE 360

