



**Acre Lane, Brixton, SW2**

2 bedroom flat - penthouse for sale

**£650,000**

Leasehold

## Property Details

This stunning two double bedroom, two bathroom penthouse apartment boasts uninterrupted views of the London city skyline and is peacefully tucked away on the fourth floor of an iconic Art Deco-style building. Beautifully presented with high end fixtures and fittings, the heart of the home is the expansive open-plan reception, kitchen and dining space, finished with sleek herringbone flooring and flooded with natural light from large picture windows that frame far-reaching panoramic views and open onto a private Juliette balcony. The stylish kitchen features sleek minimalist cabinetry, crisp white worktops, integrated appliances and a central island with integrated fridge and freezer and pendant lighting. Both bedrooms are generous doubles with soft carpeting, with the principal bedroom benefiting from built-in wardrobes and a contemporary ensuite with walk-in shower. A generous family bathroom offers a shower over the bath. Located on the top floor, this newly constructed level provides superior ceiling height, excellent insulation and double-glazed windows throughout, within a small, sought-after development with lift access and ample bike storage.

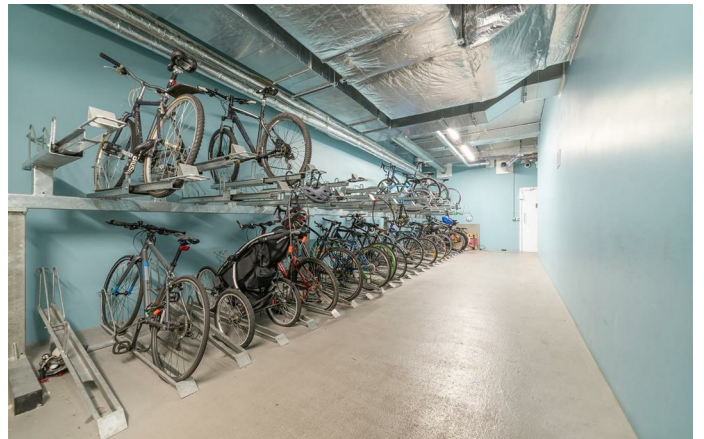
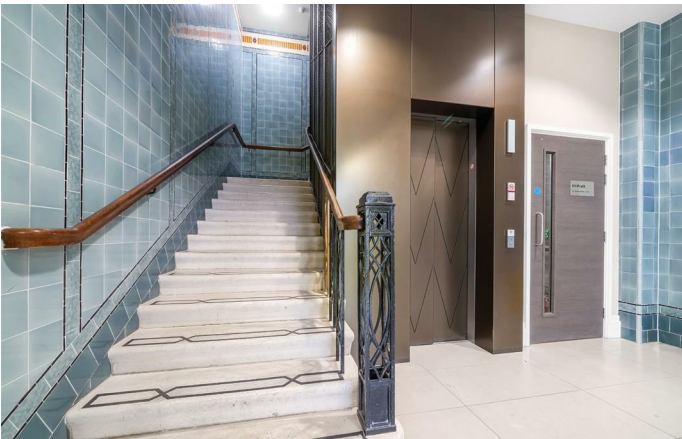
Council tax band D

EPC rating B (82)

## Features

- Two double bedrooms
- Two bathrooms
- Stunning Art-Deco style modern build
- Panoramic city views with Juliette balcony
- Peacefully nestled on the top floor
- High-end finishes and tasteful design throughout
- Lift and bike storage
- Central Brixton, moments from the Tube station and Brixton Village
- A short stroll to Brockwell Park
- Chain-free

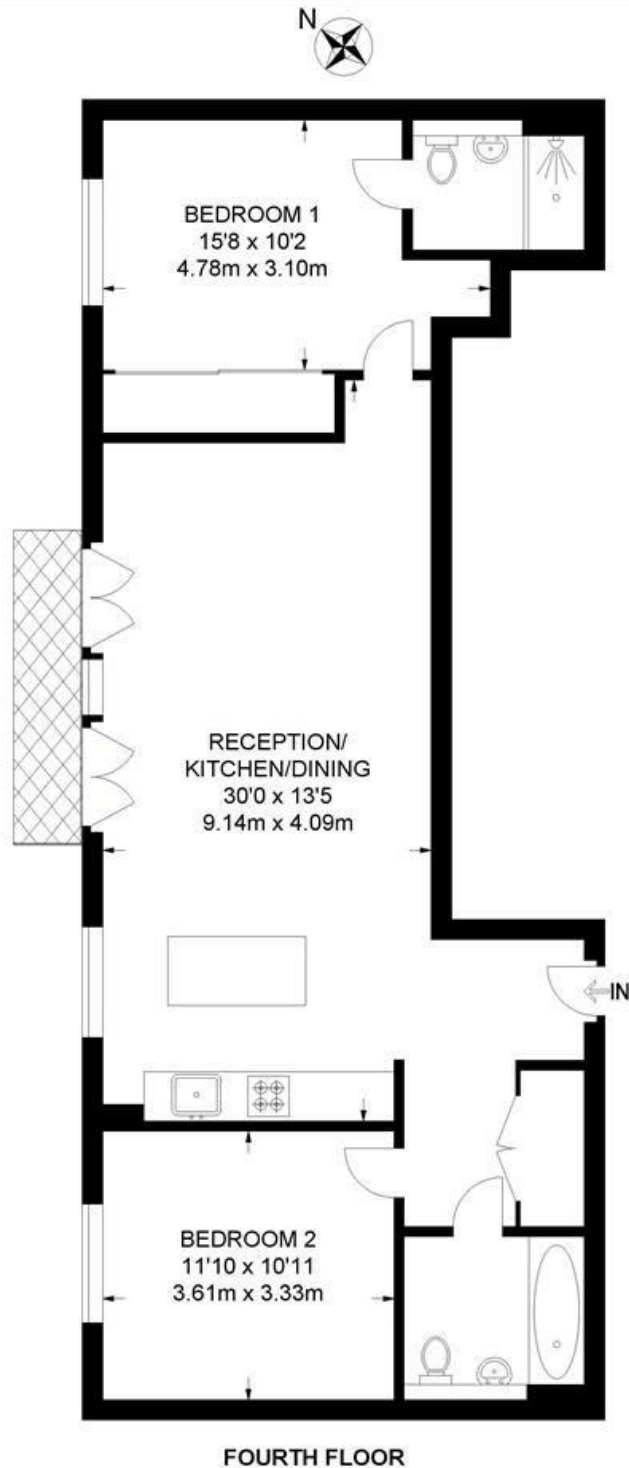




Acre Lane, Brixton, SW2

**Acre Lane, SW2**  
**2 Bedroom Flat**

APPROXIMATE GROSS INTERNAL AREA: 861 SQ FT / 80 SQ M



While we try our very best, floor plans are produced as a guide only and we take no responsibility for the precise accuracy with which any property is represented.

Acre Lane, Brixton, SW2

