



Cardinals Walk, TW12

£1,325,000

Dexters



Cardinals Walk, TW12

Set on a generous plot, this attractive 1930s semi detached home offers well balanced living space, a fantastic rear garden and two versatile outbuildings providing excellent scope for a home office, gym or studio.

The ground floor comprises two reception rooms full of character, a spacious kitchen/dining room with a central island opening directly onto the garden, and a separate utility room and guest cloakroom. There is also significant scope to extend further, subject to the necessary planning permissions. Upstairs are three generous double bedrooms and a modern family bathroom, with the principal bedroom benefiting from extensive fitted wardrobes.

Outside, the large rear garden is a real highlight, offering an excellent amount of space for entertaining and outdoor living. The two detached outbuildings provide flexible additional space, ideal as offices or garden rooms, while off-street parking completes this excellent home.

Cardinals Walk, part of the popular "Ormonds", is located a short distance from Royal Bushy Park (with an entrance close by, next to the swimming pool), Hampton Lido, and Hampton mainline train station with links to London Waterloo. Hampton Hill high street and Hampton village are also nearby, and the area is well served by excellent state and private schools.

Features

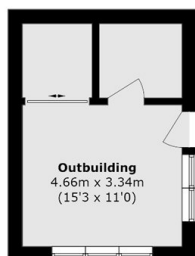
- Semi Detached
- 1930s Build
- Large Garden
- Three Bedrooms
- Off Street Parking
- Outbuildings



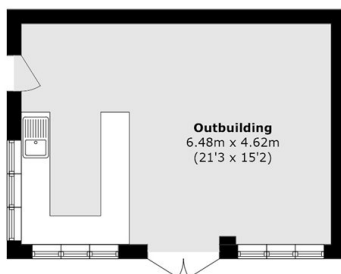




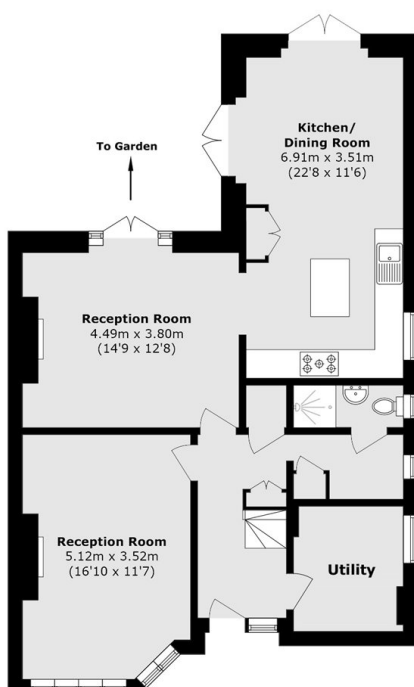
Cardinals Walk, Hampton, TW12



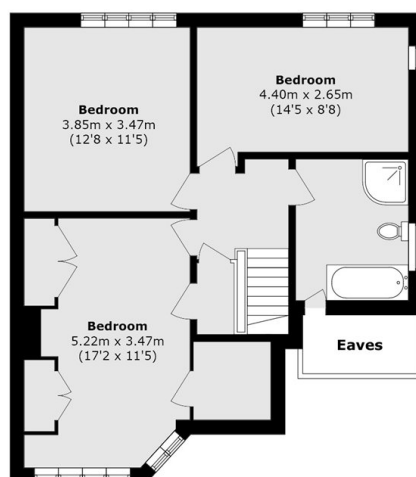
Ground Floor



Ground Floor



Ground Floor



First Floor

Total Area (approx.): 141.9 sq. m (1527.4 sq. ft)
(Excluding Eaves)
Outbuilding area (approx.): 45.5 sq. m (489.7 sq. ft)