



## Corfield Street, London, , E2 0DN £1,800 PCM

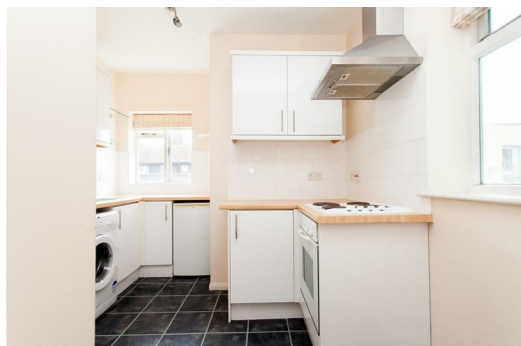
Elms Estates are pleased to offer to the market To Let this One Bedroom Apartment located within the Heart of Bethnal Green.

The property is situated just off Bethnal Green Road on a delightful street with numerous Green Spaces such as Weaver's Fields, Bethnal Green Gardens, Museum Gardens, St Bartholmew Gardens within easy reach. It has Excellent Transport Links such as Bethnal Green Underground & Overground Stations close by while also only being 10 minutes from the Elizabeth Line too. It is a short walk to the famous Brick Lane & Shoreditch High Street and close to many superb Local Amenities and an abundance of Shops, Restaurants and Cafes.

Internally the property is bright and spacious throughout with a good size reception room, Modern fitted kitchen, Double bedroom and bathroom.

Corfield Street is available to move in to from 24 April 2026 Onwards and really is one to not be missed.

For more information or to arrange a viewing please do not hesitate to call in and speak with one of our Property Consultants.



## Reception

12'1" x 12'1" (3.7 x 3.7)

## Kitchen

11'5" x 9'2" (3.5 x 2.8)

## Bedroom One

10'5" x 7'6" (3.2 x 2.3)

## Bathroom

## Material Information

Deposit: £2,076.92

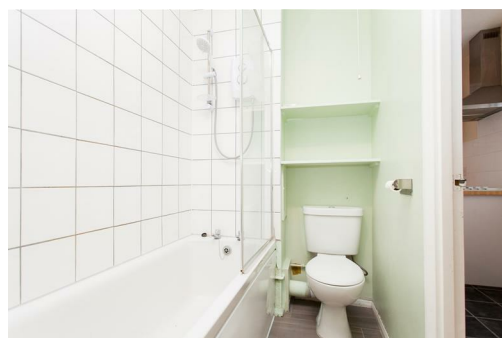
Council Tax Band: B

## Marketing Disclaimer

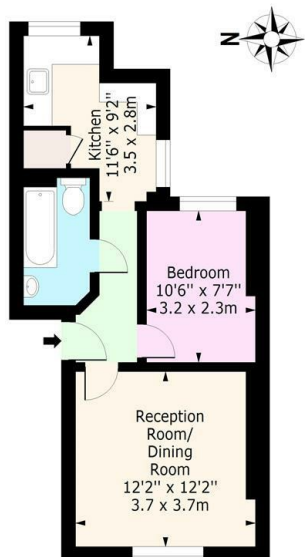
These particulars are intended to give a fair description of the property, but their accuracy cannot be guaranteed and they do not constitute an offer or contract. Any intending tenant must rely on their own inspection and enquiries. All measurements, areas and distances are approximate and are for guidance purposes only. Photographs and floor plans are for illustrative purposes only and some images may have been digitally enhanced for marketing purposes.

Where the property is managed by Elms Estates (if applicable), appliances, fixtures and fittings provided are checked and are intended to be in reasonable working order at the commencement of the tenancy. However, no guarantee is given as to their continued or uninterrupted operation and faults may occur during the tenancy. Any issues should be reported in accordance with the tenancy agreement to allow for inspection and repair.

Council Tax bands, EPC ratings and permitted payments under the Tenant Fees Act 2019 are provided in good faith and are subject to verification. No person in the employment of Elms Estates has authority to make or give any representation or warranty in relation to this property.



Corfield Street, E2  
Approx. Gross Internal Area 409 Sq Ft - 38.00 Sq M



## Third Floor

Floor Area 409 Sq Ft - 38.00 Sq M

For Illustration Purposes Only - Not To Scale  
www.lpaplus.com

Energy Efficiency Rating		Environmental Impact (CO <sub>2</sub> ) Rating	
Current	Potential	Current	Potential
<p>Very energy efficient - lower running costs</p> <p>(92 plus) <b>A</b></p> <p>(81-91) <b>B</b></p> <p>(69-80) <b>C</b></p> <p>(55-68) <b>D</b></p> <p>(39-54) <b>E</b></p> <p>(21-38) <b>F</b></p> <p>(1-20) <b>G</b></p> <p>Not energy efficient - higher running costs</p>			
	<b>84</b>		<b>75</b>
<p>Very environmentally friendly - lower CO<sub>2</sub> emissions</p> <p>(92 plus) <b>A</b></p> <p>(81-91) <b>B</b></p> <p>(69-80) <b>C</b></p> <p>(55-68) <b>D</b></p> <p>(39-54) <b>E</b></p> <p>(21-38) <b>F</b></p> <p>(1-20) <b>G</b></p> <p>Not environmentally friendly - higher CO<sub>2</sub> emissions</p>			
			<b>43</b>
England & Wales		England & Wales	
EU Directive 2002/91/EC		EU Directive 2002/91/EC	