



Connells

Kirkby Road
Barwell Leicester



Property Description

Situated on the popular Kirkby Road in Barwell, this attractive two-bedroom detached bungalow enjoys a generous plot and offers well-maintained accommodation throughout, perfect for downsizers, professional couples or anyone looking for comfortable single-storey living.

The property is approached via a spacious driveway providing ample off-road parking.

To the front of the property are two well-proportioned double bedrooms, both beautifully presented.

The stylish breakfast kitchen has been thoughtfully updated and features a range of modern shaker-style units, ample worktop space and integrated appliances, creating a practical and attractive space for everyday living.

The spacious lounge provides a comfortable setting for relaxation and opens through to a bright dining room overlooking the rear garden, offering an ideal space for entertaining family and friends.

Completing the accommodation is a contemporary family bathroom fitted with a modern suite.

Outside, the substantial rear garden enjoys a high degree of privacy and is mainly laid to lawn with mature trees, established planting and generous patio seating areas. A summerhouse provides additional versatility and could be utilised as a home office.

Located within easy reach of local shops, amenities, schools and transport links, this superb, detached bungalow presents a rare opportunity to acquire a move-in-ready home in a highly desirable residential location.

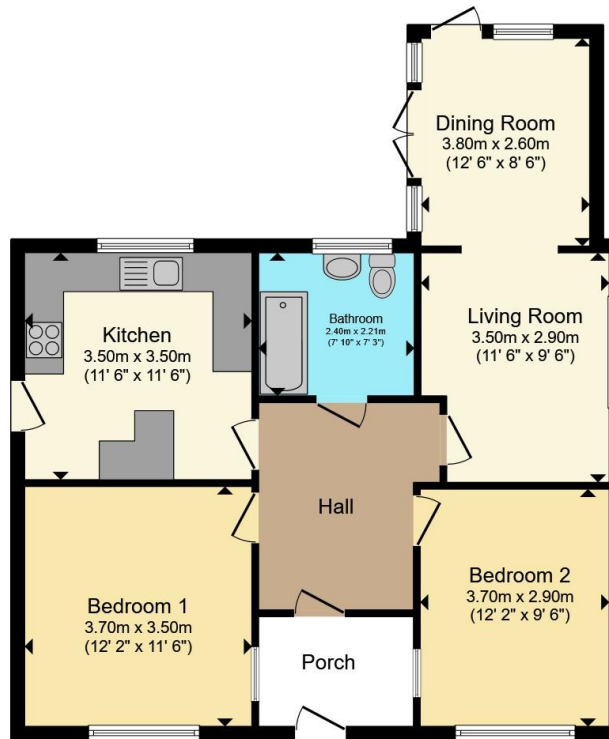
Early viewing is highly recommended.











Total floor area 69.7 m² (750 sq.ft.) approx

This floor plan is for illustrative purposes only. It is not drawn to scale. Any measurements, floor areas (including any total floor area), openings and orientation are approximate. No details are guaranteed, they cannot be relied upon for any purpose and they do not form part of any agreement. No liability is taken for any error, omission or misstatement. A party must rely upon its own inspection(s). Powered by www.propertybox.io

Connells

To view this property please contact Connells on

T 01455 230523
E hinckley@connells.co.uk

88 Castle Street
 HINCKLEY LE10 1DD

EPC Rating: D Council Tax
 Band: C

Tenure: Freehold

view this property online connells.co.uk/Property/HIN314052



1. MONEY LAUNDERING REGULATIONS Intending purchasers will be asked to produce identification documentation at a later stage and we would ask for your co-operation in order that there will be no delay in agreeing the sale. 2. These particulars do not constitute part or all of an offer or contract. 3. The measurements indicated are supplied for guidance only and as such must be considered incorrect. Potential buyers are advised to recheck measurements before committing to any expense. 4. We have not tested any apparatus, equipment, fixtures, fittings or services and it is in the buyers interest to check the working condition of any appliances.

Connells Residential is registered in England and Wales under company number 1489613, Registered Office is Cumbria House, 16-20 Hockliffe Street, Leighton Buzzard, Bedfordshire, LU7 1GN. VAT Registration Number is 500 2481 05.

See all our properties at www.connells.co.uk | www.rightmove.co.uk | www.zoopla.co.uk

Property Ref: HIN314052 - 0002