



## Redgrave Road, SW15

£8,000 Per calendar month

**Dexters**



## Redgrave Road, SW15

An immaculate semi-detached house which spans four floors and has been finished to a contemporary standard, whilst still maintaining its period features. Boasting a split-level garden featuring a multi-purpose garden studio.

Redgrave Road is located on a quiet residential road in the heart of Putney, within close proximity to high street, the river and tube stations, as well as all the local amenities.

### Features

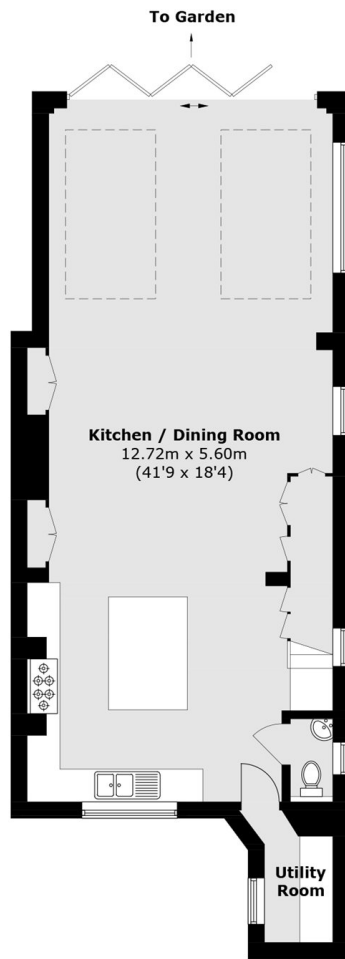
- Five Bedrooms
- Two Bathrooms
- Private Garden
- Garden Studio
- Unfurnished
- Excellent Location



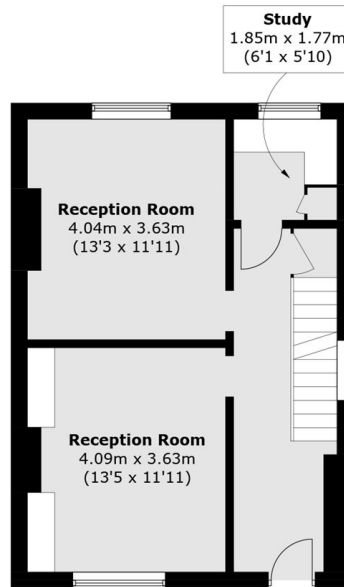




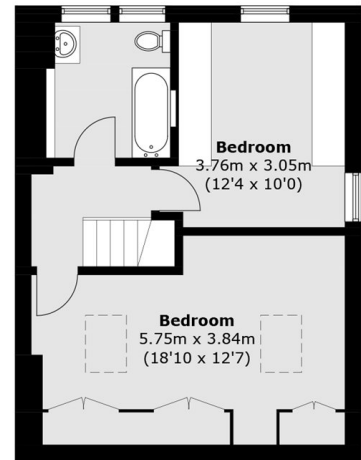
# Redgrave Road, London, SW15



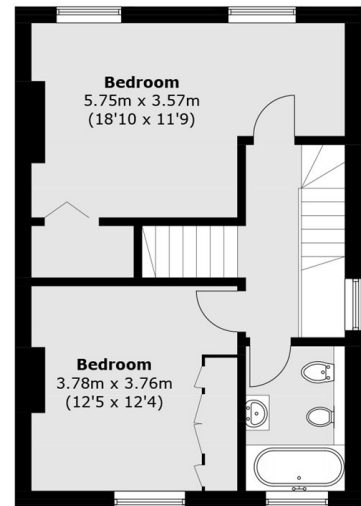
**Lower Ground Floor**



**Upper Ground Floor**



**Second Floor**



**First Floor**

Total area (approx.): 214.8 sq. m (2,311.9 sq. ft)