



Oaklands Avenue, TW7

£899,950

Dexters



Oaklands Avenue, TW7

Offered to the market with no onward chain is this stunning four bedroom, three bathroom semi detached house, retaining many period characteristics with a beautiful modern blend. Key highlight include loft and rear extensions, underfloor heating and two en-suites.

There is off-street parking on the front drive, as well as a porch upon entering the property. The ground floor consists of three receptions which have been opened up as one large room but could equally be used as separate living spaces. There is a beautiful kitchen with a roof lantern providing plenty of natural light. There are two entrances which open into a lovely landscaped garden with a rear outbuilding and sheltered chef's kitchen, a fantastic space for entertaining friends and family.

On the first floor there are three well proportioned bedrooms, one en-suite and a family bathroom. Two of the larger bedrooms have fantastic built in wardrobes. The second floor hosts a spacious en-suite bedroom, complete with a Juliet balcony and walk-in wardrobe.

Ideally situated on a quiet residential cul-de-sac close to excellent local schools, National Trust's Osterley Park and superb amenities. Both Syon Lane and Osterley station are nearby with excellent transport links. There is easy access to the A4/M4 in and out of London

Features

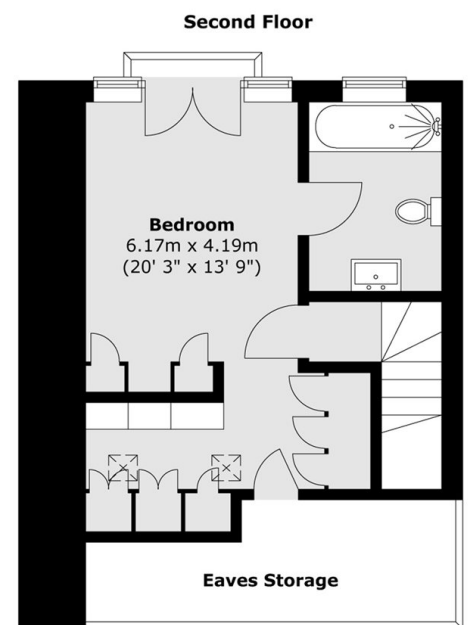
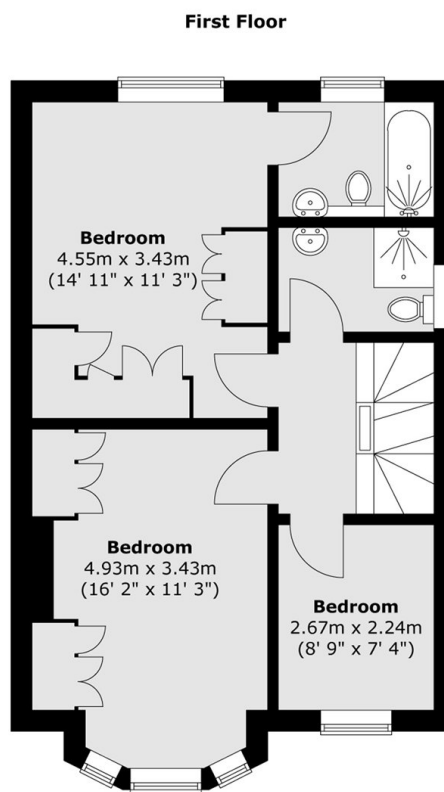
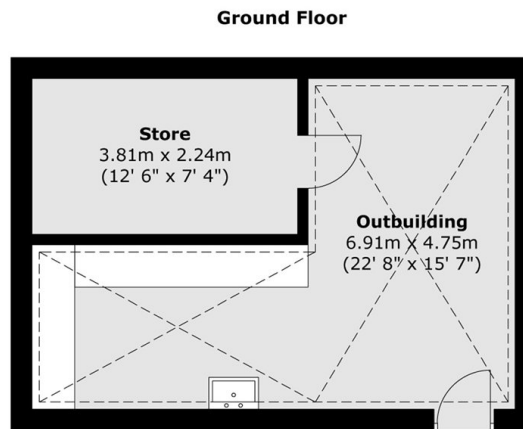
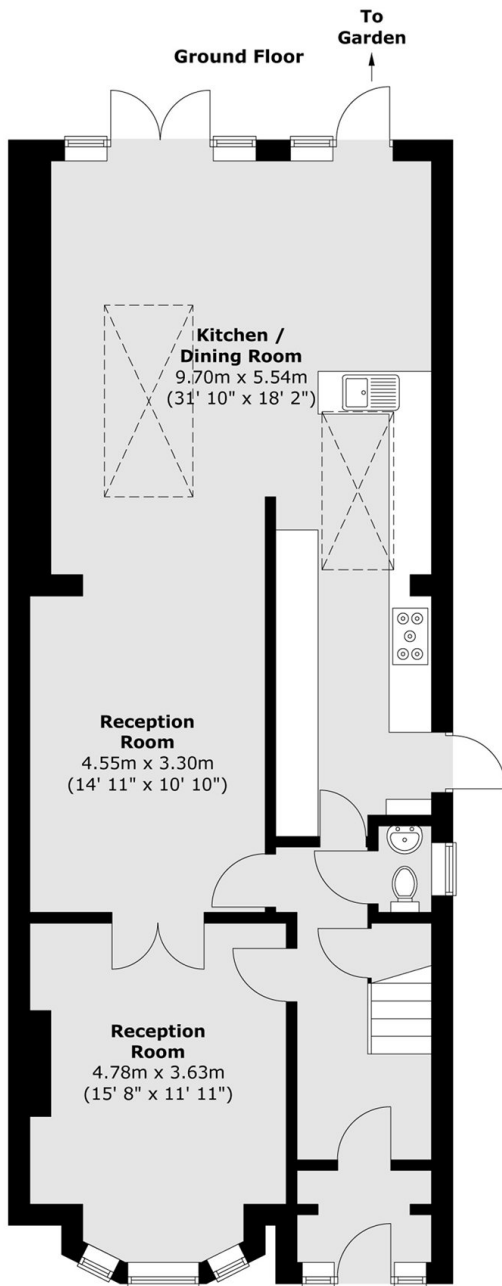
- Semi Detached House
- Four Bedrooms
- Three Bathrooms
- Underfloor Heating
- Off Street Parking
- No Chain







Oaklands Avenue, Isleworth, TW7



Total area (approx.) : 170.8 sq. m (1838 sq. ft)
(Excluding eaves storage)
Total outbuilding area (approx.) : 33.1 sq. m (356 sq. ft)
Total balcony area (approx.) : 0.6 sq. m (6 sq. ft)