



**Ramblers Hotel Sutton Road, Trusthorpe Mablethorpe LN12
2PY**

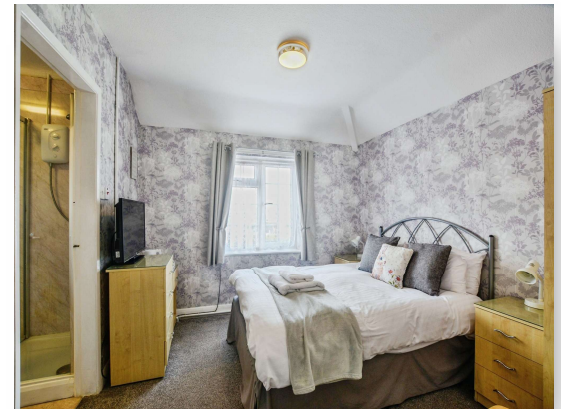
welcome to

Ramblers Hotel Sutton Road, Truethorpe Mablethorpe

****RECENTLY REDUCED BY £50,000!****

Life Style business with scope to improve.

We welcome to the market this well presented 6 bedroom Guest House with 2 bed owners accommodation, perfectly situated in the coastal village



Entrance

Entrance door leads into entrance porch which has a door leading into the hallway. The hallway offers a radiator, stairs leading to the first floor and doors leading into the following rooms:

Sitting Area

15' 1" x 9' 11" (4.60m x 3.02m)

Has a window, radiator and open access into the dining area

Dining Area

12' x 14' 1" (3.66m x 4.29m)

Has a window to the front and a radiator

Lounge

17' 10" x 11' 11" (5.44m x 3.63m)

Has a window to the front and two radiators

Room 5

Twin room with window, radiator and wet room en-suite

Room 6

10' 10" x 9' 9" (3.30m x 2.97m)

Double room with window, radiator and wet room en-suite

Landing

Has a radiator and doors leading into the following rooms

Room 1

15' 3" x 13' 9" (4.65m x 4.19m)

Family room with window, radiator and shower room en-suite

Room 2

11' 9" x 10' 9" (3.58m x 3.28m)

Twin room with window, radiator and shower Room en-suite

Room 3

11' 11" x 9' 10" (3.63m x 3.00m)

Double room with window, radiator and shower room en-suite

Room 4

10' x 12' 2" (3.05m x 3.71m)

double room with window, radiator and bath en-suite

WC

Owners Accommodation

Kitchen

14' 5" min to cup x 11' 10" (4.39m min to cup x 3.61m)

Comprising of wall, base and drawer units with worktop space over, two sinks, hand wash basin, window, space for appliances and door into rear porch. The Kitchen serves both the guest house and owners.

Rear Porch Lean To

22' 10" x 5' 5" (6.96m x 1.65m)

Has a door to the rear elevation and door leading into:

Hall

Has an electric radiator and doors into

Lounge

13' 8" x 11' 2" (4.17m x 3.40m)

Has a window and an electric radiator

Bedroom 1

10' 7" x 11' 5" (3.23m x 3.48m)

Has a window and an electric radiator

Bedroom 2

9' 10" x 6' 10" (3.00m x 2.08m)

Has a window and an electric radiator

Bathroom

Has a bath with shower over, WC, sink

Office Area/ Inner Hall

6' 11" x 7' 2" (2.11m x 2.18m)

inner hall is currently used as an office space

External

Externally the property offers a carpark to the front as well as gated side access for the owners. The rear is low maintenance with gravelled and patio areas.



view this property online williamhbrown.co.uk/Property/SKG109566





Ground Floor



First Floor

This floor plan is for illustrative purposes only. It is not drawn to scale. Any measurements, floor areas (including any total floor area), openings and orientation are approximate. No details are guaranteed, they cannot be relied upon for any purpose and they do not form part of any agreement. No liability is taken for any error, omission or misstatement. A party must rely upon its own inspection(s). Powered by www.focalagent.com

welcome to

Ramblers Hotel Sutton Road, Trusthorpe Mablethorpe

- GUEST HOUSE LOCATED IN POPULAR LOCATION TRUSTHORPE
- 6 GUEST ROOMS
- AMPLE PARKING
- GUEST LOUNGE & DINING ROOM
- SEPARATE OWNERS ACCOMMODATION

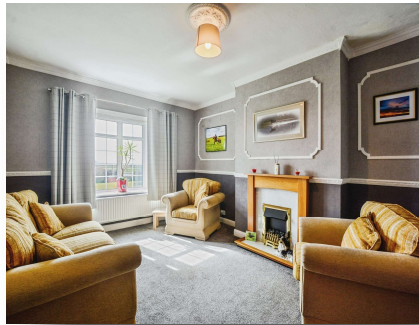
Tenure: Freehold EPC Rating: B
Council Tax Band: A

offers over

£425,000

directions to this property:

See Multi-map illustration



Please note the marker reflects the
postcode not the actual property

view this property online williamhbrown.co.uk/Property/SKG109566



Property Ref:
SKG109566 - 0010

1. MONEY LAUNDERING REGULATIONS Intending purchasers will be asked to produce identification documentation at a later stage and we would ask for your co-operation in order that there is no delay in agreeing the sale. 2. These particulars do not constitute part or all of an offer or contract. 3. The measurements indicated are supplied for guidance only and as such must be considered incorrect. Potential buyers are advised to recheck measurements before committing to any expense. 4. We have not tested any apparatus, equipment, fixtures or services and it is in the buyers interest to check the working condition of any appliances. 5. Where an EPC, or a Home Report (Scotland only) is held for this property, it is available for inspection at the branch by appointment. If you require a printed version of a Home Report, you will need to pay a reasonable production charge reflecting printing and other costs. 6. We are not able to offer an opinion either written or verbal on the content of these reports and this must be obtained from your legal representative. 7. Whilst we take care in preparing these reports, a buyer should ensure that his/her legal representative confirms as soon as possible all matters relating to title including the extent and boundaries of the property and other important matters before exchange of contracts.

William H Brown is a trading name of Sequence (UK) Limited which is registered in England and Wales under company number 4268443, Registered Office is Cumbria House, 16-20 Hockliffe Street, Leighton Buzzard, Bedfordshire, LU7 1GN. VAT Registration Number is 500 2481 05.


william h brown



01754 768311



Skegness@williamhbrown.co.uk



20 Roman Bank, SKEGNESS, Lincolnshire, PE25
2RU



williamhbrown.co.uk