



Kirtley Avenue, Eccles

Manchester



Offers in Region of **£280,000**

Kirtley Avenue

Eccles, Manchester

Spacious three-bed end terrace near Monton Village, with modern kitchen, updated bathroom, off-road parking, and sun-filled garden. Close to schools, shops, and transport links.

Council Tax band: A

Tenure: Freehold

- Spacious Three Bedroom End Terrace Property Located just a Short Walk to Monton Village
- No Vendor Chain
- Spacious Family Lounge
- Timeless Shaker Style Fitted Kitchen and Dining Space
- Three Generous Bedrooms
- Modern Fitted Bathroom Suite Updated in the Last Five Years
- Beautifully Kept, Sun Drenched Rear Garden
- Off Road Parking to the Front
- Fabulous First Time Buy
- Well Served by Amenities and Brilliant Transport Links



HILLS



Entrance Hallway

Lounge

15' 7" x 12' 4" (4.75m x 3.76m)

Kitchen / Diner

13' 6" x 9' 3" (4.12m x 2.82m)

Sun Room

5' 7" x 5' 8" (1.70m x 1.73m)

Landing

Bedroom One

14' 6" x 9' 6" (4.42m x 2.90m)

Bedroom Two

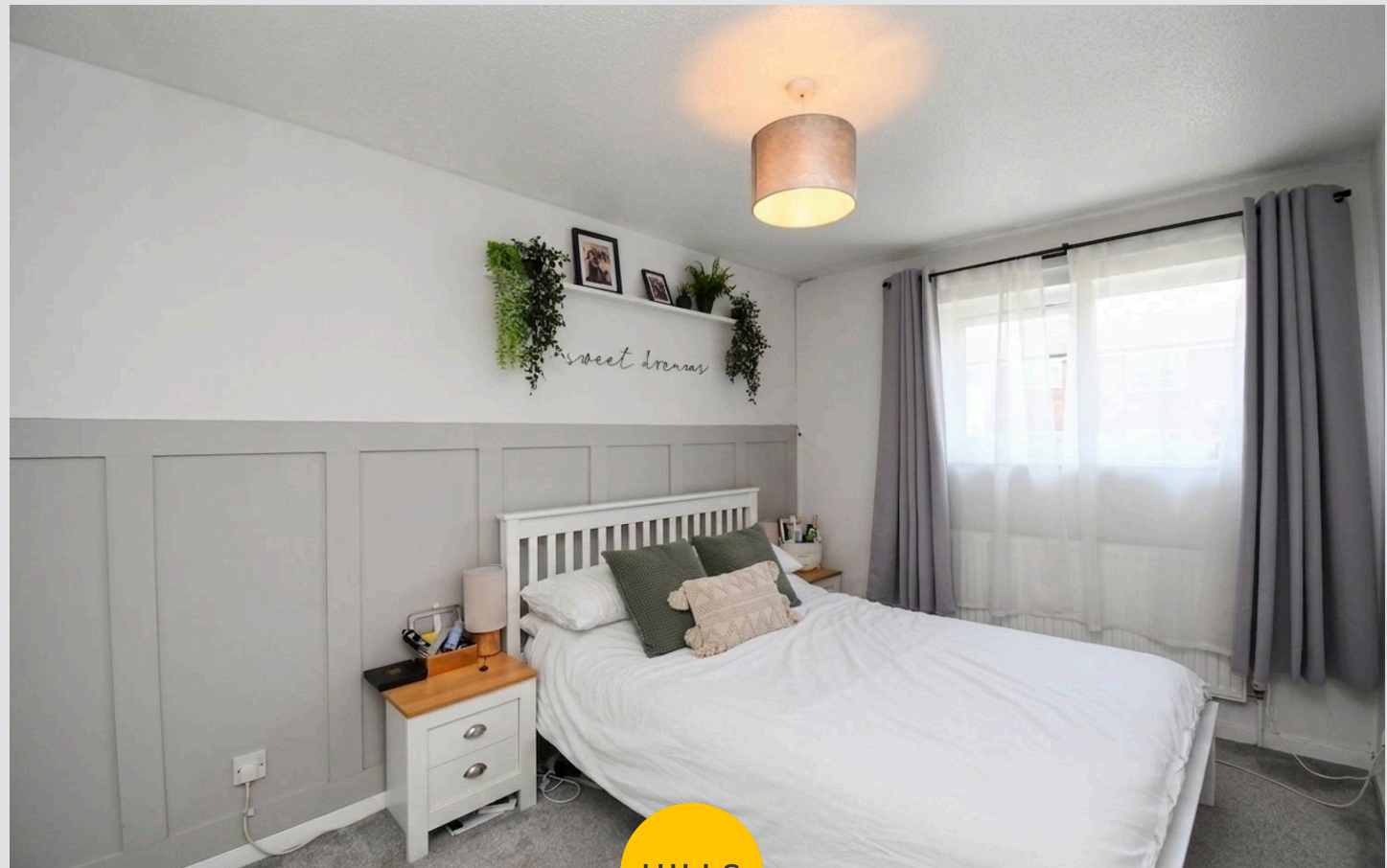
11' 7" x 9' 6" (3.53m x 2.90m)

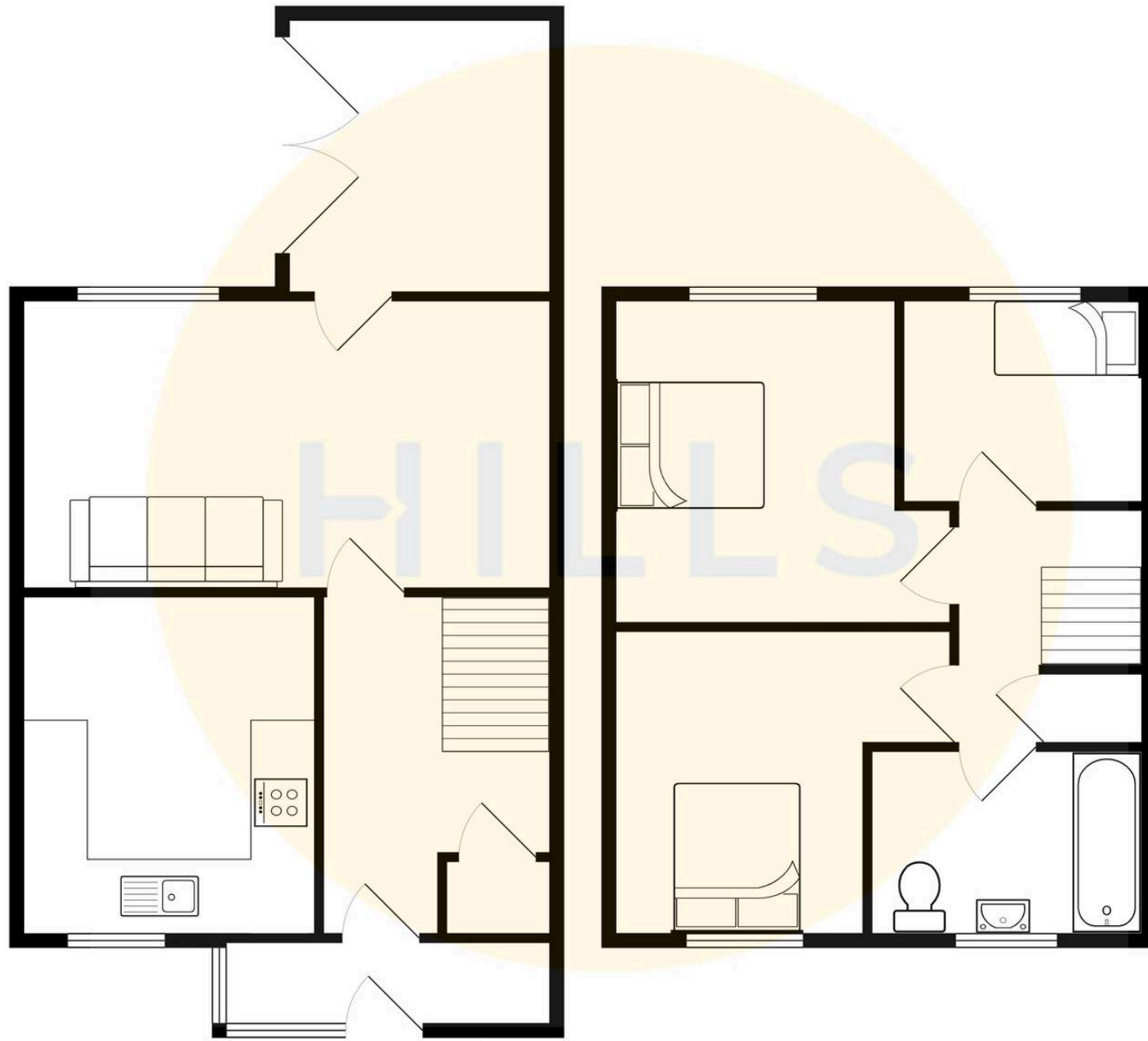
Bedroom Three

9' 4" x 6' 8" (2.85m x 2.03m)

Bathroom

8' 6" x 5' 3" (2.59m x 1.60m)







Hills | Salfords Estate Agent

Hills Residential, Sentinel House Albert Street – M30 0SS

0161 707 4900

sales@hills.agency

www.hills.agency/



By law, we are required to conduct anti-money laundering checks on all potential buyers and sellers. In line with HMRC guidelines, our trusted partner, Coadjute, will securely manage these checks on our behalf. A non-refundable fee of £45 + VAT per person will apply, and Coadjute will handle the payment. Once an offer is accepted, Coadjute will send a secure link for you to complete the biometric checks. These checks must be completed before we can send the memorandum of sale to all parties. PLEASE NOTE: The Agent has not tested any equipment, fixtures, fittings or services so cannot verify that they are in working order or fit for the purpose. References to the properties tenure are based on information supplied by the seller. You are advised to check the availability of this property before travelling any distance to view. Every effort has been made to ensure these particulars are correct and not misleading but their accuracy is not guaranteed nor do they form part of any contract.