

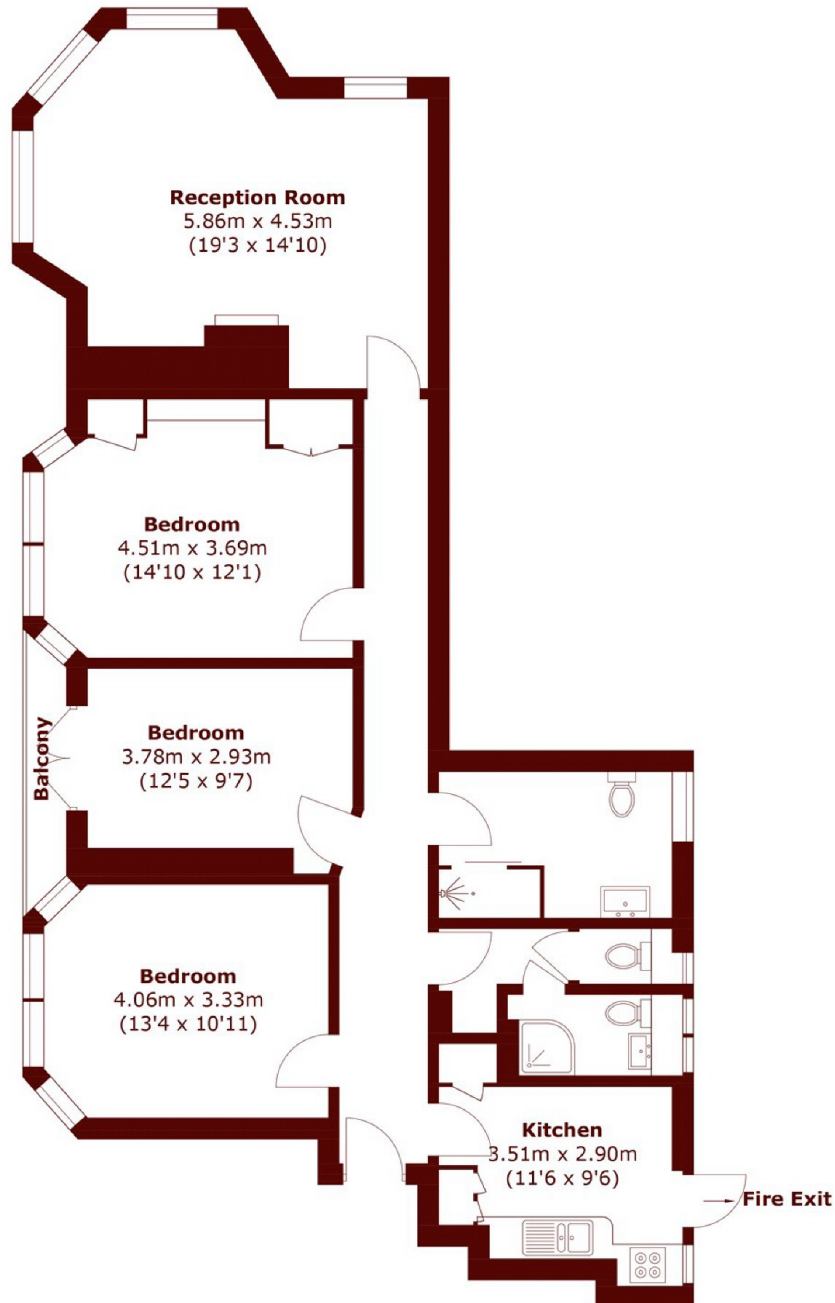


## Dorset Square, NW1

£1,000,000



- Three Double Bedrooms
- Two Bathrooms
- Long Lease
- Lift
- Garden Square
- Marylebone Station



Total area (approx.): 103.7 sq. m (1,116.2 sq. ft)  
Balcony : 2.0 sq. m (21.5 sq. ft)

## Marsh & Parsons Marylebone & Mayfair

94 Baker Street, London,  
W1U 6FZ  
020 7935 1775