



3 Wellpond Close, Sharnbrook, Bedford, MK44 1PL



3 Wellpond Close
Sharnbrook
Bedford
MK44 1PL

Price £375,000

Well-maintained three-
bedroom home in a desirable
village setting...

Spacious living room

Dining room

Beautifully upgraded kitchen

Two double bedrooms

Further single bedroom

Family bathroom

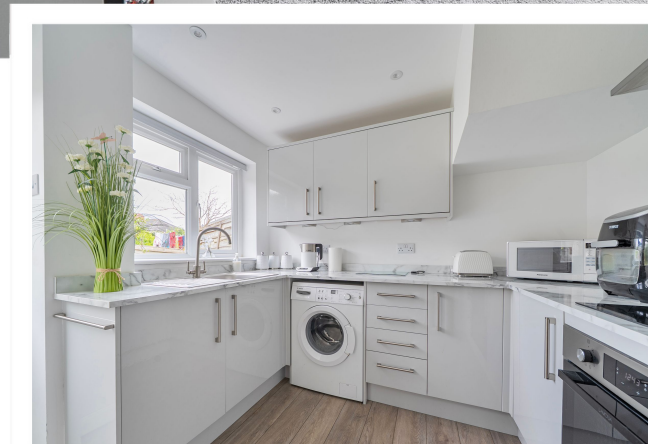
Single garage

Large driveway

Village location

Freehold

- Council Tax Band C
- Energy Efficiency Rating D



Located in a quiet cul-de-sac with local amenities within easy reach...



Set in the highly sought-after village of Sharnbrook, this three-bedroom semi-detached property offers well-proportioned living accommodation arranged over two floors.

The ground floor which has recently been upgraded by the current owner features a spacious living room with a stylish electric feature fireplace, flowing into a bright and airy dining room. This leads to the modern kitchen, which enjoys views over the garden and direct access outside.

Upstairs, the property comprises two double bedrooms of a generous size, and a further single bedroom, all benefiting from fitted storage. The accommodation is completed by a family bathroom.

Further benefits include double glazed windows throughout and gas central heating.

Externally, the property enjoys a good-size private rear garden, partly laid to lawn and partly paved with rear access to a single garage. To the front, there is a large driveway providing off-road parking for multiple vehicles.

Wellpond Close is set within the popular village of Sharnbrook and is positioned in a quiet residential cul-de-sac. Local amenities, including well-regarded schools, shops and a village surgery, are within easy reach, while the surrounding countryside and River Great Ouse provide an attractive setting. The A6 offers convenient road links to Bedford and beyond, combining rural charm with accessibility.

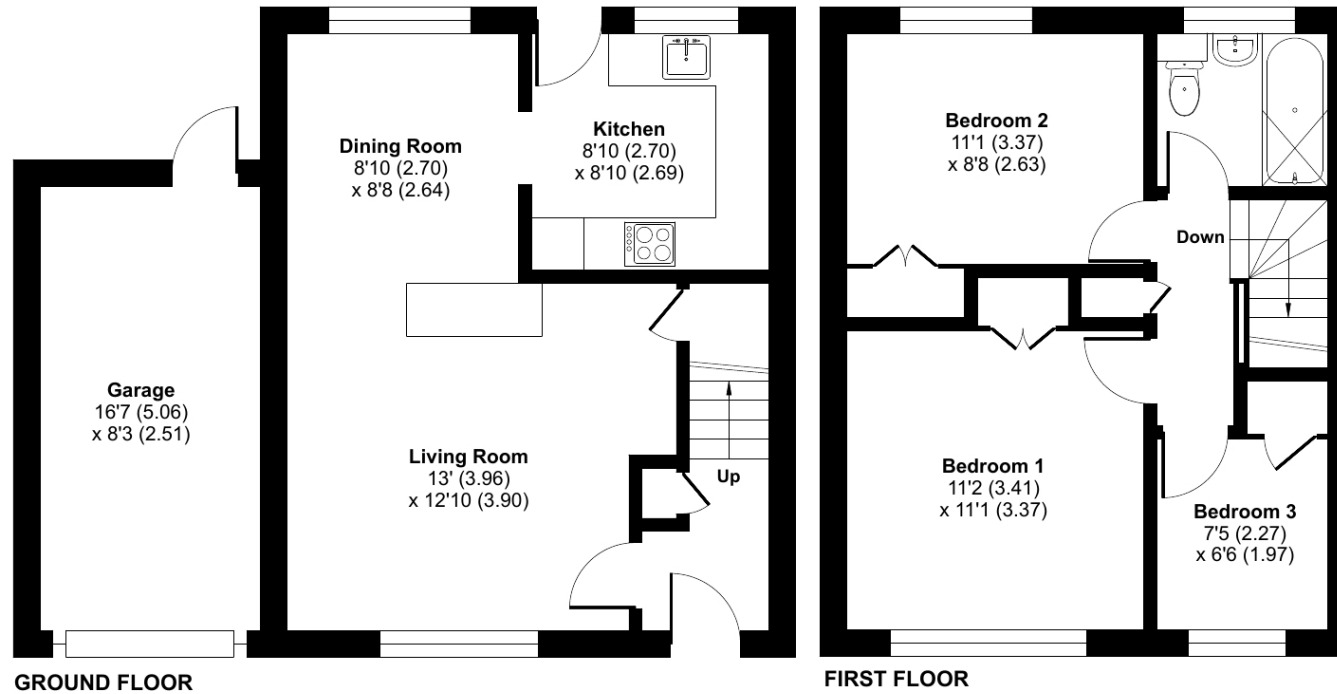
Bedford Railway Station • 8.5 miles
Milton Keynes • 20 miles
A1 Black Cat Roundabout • 16 miles
M1 Junction 13 • 19 miles



Wellpond Close, Sharnbrook, Bedford, MK44

Approximate Area = 804 sq ft / 74.6 sq m (excludes garage)

For identification only - Not to scale



Floor plan produced in accordance with RICS Property Measurement 2nd Edition, Incorporating International Property Measurement Standards (IPMS2 Residential). © n̄che.com 2026. Produced for Lane & Holmes. REF: 1455343



01234 327744 | sales@laneandholmes.co.uk | www.laneandholmes.co.uk | 66-68 St Loyes Street, Bedford, Bedfordshire, MK40 1EZ

Agents Notes: The agent has not tested any apparatus, equipment, fixtures & fittings or services and so cannot verify that they are in working order or fit for the purpose. A buyer is advised to obtain verification from their solicitor or surveyor. All photographs shown are for illustration only and may depict items that are not for sale or included in the sale of the property. Please note that we have not checked the situation with regards to planning consents, building regulation consents and any other relevant consent relating to this property and therefore, any interested applicant should carry out their own enquiries with the appropriate authorities. All measurements are approximate and for guidance only. The particulars do not form part of any contract and all properties are offered subject to contract.

