



Connells

Holte End
Northampton



Property Description

The accommodation comprises entrance hall, cloakroom/WC, sitting/dining room and kitchen. To the first floor, three generous size bedrooms. The master bedroom is a particularly impressive double room, complete with its own modern en-suite. There are two further well-sized bedrooms, both perfect for children or guests. Completing the first-floor accommodation is a contemporary three-piece family bathroom. Externally, the property boasts a significant advantage with its secluded and beautifully landscaped rear garden. Designed for low maintenance and high enjoyment, this private space features a laid lawn and a paved patio area, creating the perfect setting for summer barbecues and children's play. To the front of the property is a driveway which provides secure off-road parking for two vehicles and leads to a detached garage.

Abington Vale is a highly desirable and established residential area, renowned for its community feel and proximity to amenities. The property is just a short stroll from an excellent range of local shops, supermarkets, and restaurants. The vast green spaces of Abington Park, with its museum, lakes, and café, are also within easy walking distance. For families, the catchment area for the outstanding Bridgewater Primary School is a major draw. The property also offers excellent transport links, providing easy access to Northampton town centre and the main road networks, including the A45 and M1.

Entrance Hall

Enter via double glazed door to the front aspect. Wall mounted radiator.

Cloakroom

Double glazed window to the front aspect. Wash hand basin and low level WC. Wall mounted radiator.

Lounge

Double glazed window and french doors to the rear aspect. TV point. Storage cupboards. Two wall mounted radiators.

Kitchen

Wall and base units. Worksurfaces. Sink and drainer unit. Gas hob with hood over. Integrated fridge-freezer and dishwasher. Combi boiler. Space for white goods.

Landing

Access to loft space. Storage cupboard housing tank system. Wall mounted radiator.

Bedroom One

Double glazed window to the front aspect. Wall mounted radiator. TV point.

En Suite

Shower cubicle, wash hand basin and low

level WC. Wall mounted radiator.

Bedroom Two

Double glazed window to the rear aspect.
Wall mounted radiator.

Bedroom Three

Double glazed window to the rear aspect.
Wall mounted radiator.

Bathroom

Bath, wash hand basin and low level WC.
Wall mounted radiator. Double glazed window
to the front aspect.

Outside

Rear Garden

Laid to lawn. Patio area. Enclosed by fencing.
Gated side access. Courtesy door to the
garage.

Parking

Driveway for two vehicles.

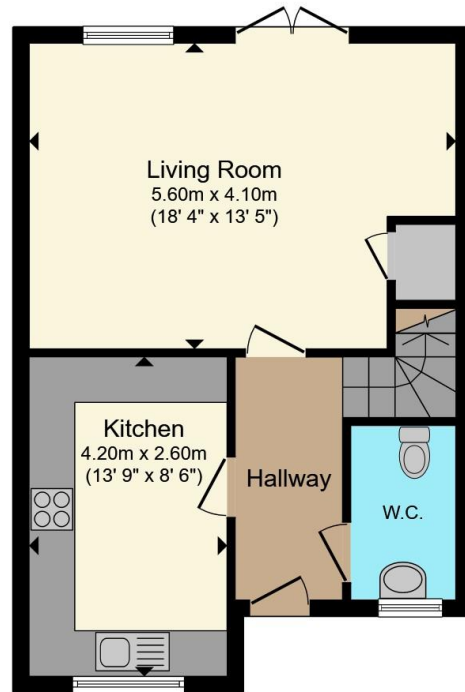
Garage

Up and over door. Double glazed door to the
side access.

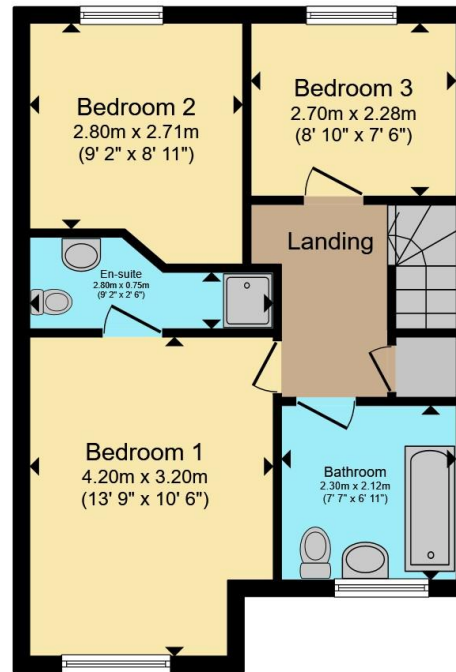








Ground Floor



First Floor

Total floor area 87.2 m² (939 sq.ft.) approx

This floor plan is for illustrative purposes only. It is not drawn to scale. Any measurements, floor areas (including any total floor area), openings and orientation are approximate. No details are guaranteed, they cannot be relied upon for any purpose and they do not form part of any agreement. No liability is taken for any error, omission or misstatement. A party must rely upon its own inspection(s). Powered by www.propertybox.io



To view this property please contact Connells on

T 01604 638 281
E northampton@connells.co.uk

6 Wood Hill
 NORTHAMPTON NN1 2DA

EPC Rating: B Council Tax
 Band: C

Tenure: Freehold

view this property online connells.co.uk/Property/NHT414857



1. MONEY LAUNDERING REGULATIONS Intending purchasers will be asked to produce identification documentation at a later stage and we would ask for your co-operation in order that there will be no delay in agreeing the sale. 2. These particulars do not constitute part or all of an offer or contract. 3. The measurements indicated are supplied for guidance only and as such must be considered incorrect. Potential buyers are advised to recheck measurements before committing to any expense. 4. We have not tested any apparatus, equipment, fixtures, fittings or services and it is in the buyers interest to check the working condition of any appliances.

Connells Residential is registered in England and Wales under company number 1489613, Registered Office is Cumbria House, 16-20 Hockliffe Street, Leighton Buzzard, Bedfordshire, LU7 1GN. VAT Registration Number is 500 2481 05.

See all our properties at www.connells.co.uk | www.rightmove.co.uk | www.zoopla.co.uk

Property Ref: NHT414857 - 0004