



**Price**  
**£380,000**

**Freehold**

3x  1x  1x 

**Payne Close, Crawley,  
West Sussex, RH10**

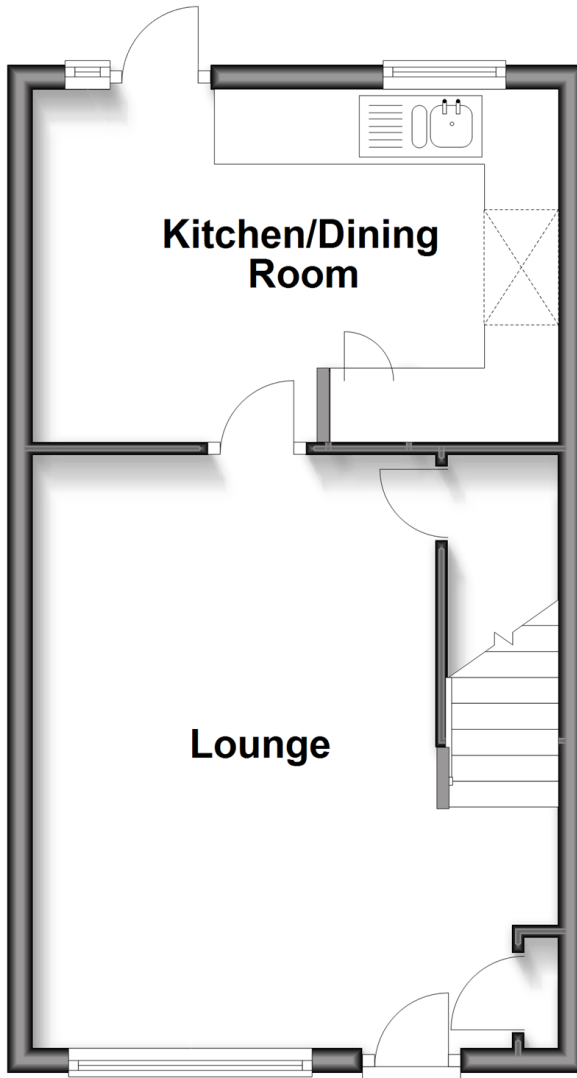
**OVER 60?**

Secure this property  
for up to **59% less!**

**cubitt&west**  
Helping you move forwards

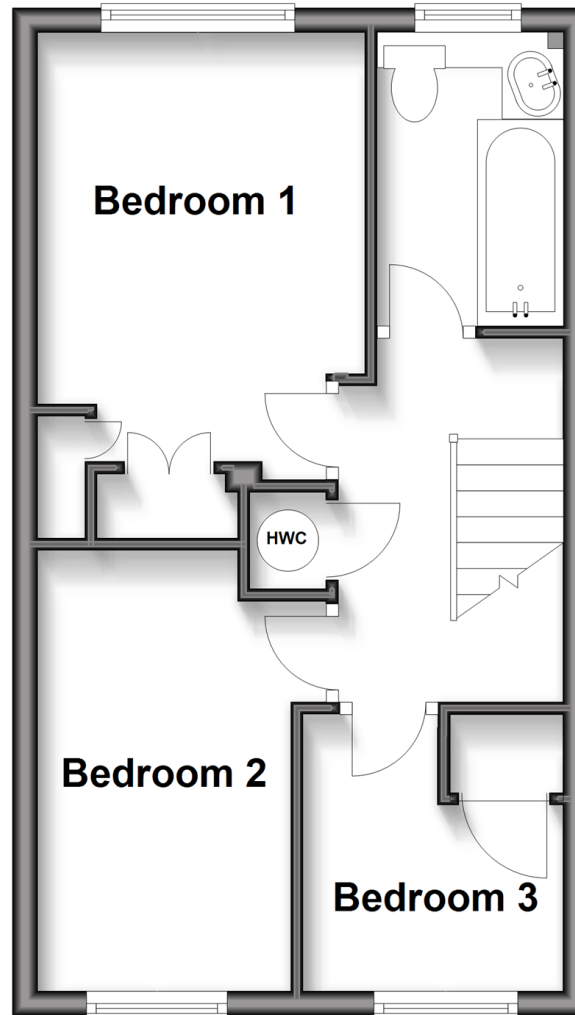
## Ground Floor

Approx. 33.5 sq. metres (360.2 sq. feet)



## First Floor

Approx. 33.5 sq. metres (360.2 sq. feet)



## Accommodation

### GROUND FLOOR

Entrance Hall

Lounge: 15'9 x 10'8 (4.80m x 3.25m)

Kitchen/Dining Room: 14'1 x 9'4 (4.30m x 2.85m)

### FIRST FLOOR

Landing

Bedroom 1: 11'9 x 8'8 (3.58m x 2.64m)

Bedroom 2: 7'4 x 7'3 (2.24m x 2.21m)

Bedroom 3: 11'9 x 6'8 (3.58m x 2.03m)

Bathroom

### OUTSIDE

Front Garden

Rear Garden

Driveway

Garage





## Main features

- Beautifully presented house in Poundhill sold with no chain
- Driveway and garage
- Lovely sunny rear garden
- Easy access to local schools, shops, Three Bridges and Gatwick
- Ideal first home or maybe something to downsize to



### Nearest Schools

Primary Schools: Milton Mount Primary 1.2 miles, Pound Hill Junior School, Crawley 1.3 miles, Maidenbower Junior School 2.1 miles

Secondary Schools: Hazelwick School 1.9 miles



### Transport Information

Train Stations: Three Bridges 1.3 miles, Crawley 3.1 miles, Ifield 3.1 miles



### Address

Payne Close, Crawley, West Sussex, RH10



### Directions

For directions to this property please contact us.





**cubitt&west**  
Helping you move forwards

Call Crawley Branch 01293 522233 ■ [cubittandwest.co.uk](https://cubittandwest.co.uk)



■ Legal advice should be taken to verify fixtures/fittings, planning, alterations and/or lease details ■ Appliances & services are untested, dimensions are approximate and floor plans are not to scale  
■ Through a Homewise Home For Life Plan people aged 60+ can secure this property for up to 50% less, by purchasing a Lifetime Lease.



20420197/20250812/SS/NH1