





Property Description

This impressive five-bedroom detached family home in Poplar Grove, Ryton-on-Dunsmore offers spacious living, modern comforts, and a superb location.

A welcoming hallway leads to a cloakroom, separate lounge and dining room leading to conservatory, and a beautifully fitted kitchen with utility room, while an integrated store room, provides additional practicality. Upstairs there are five well-proportioned bedrooms, two with ensuite shower rooms, along with family bathroom. Outside, the front features a lawn and generous driveway with ample parking while the rear garden is a true gem—well laid out, low maintenance, and perfect for family enjoyment.

This property offers the perfect blend of modern family living and village lifestyle, with excellent private schools, strong transport links with easy commute to Milton Keynes and London via A45 and M1 and countryside amenities all close by, making Poplar Grove in Ryton-on-Dunsmore an ideal setting for families seeking both convenience and community.

This impressive five-bedroom detached family home in Poplar Grove, Ryton-on-Dunsmore offers spacious living, modern comforts, and a superb location.

A welcoming hallway leads to a cloakroom, separate lounge and dining room leading to conservatory, and a beautifully fitted kitchen with utility room, while an integrated store room, provides additional practicality. Upstairs there are five well-proportioned bedrooms, two with ensuite shower rooms, along with family bathroom. Outside, the front features a lawn and generous driveway with ample parking while the rear garden is a true gem—well laid out, low maintenance, and perfect for family enjoyment.

This property offers the perfect blend of modern family living and village lifestyle, with excellent private schools, strong transport

links with easy commute to Milton Keynes and London via A45 and M1 and countryside amenities all close by, making Poplar Grove in Ryton-on-Dunsmore an ideal setting for families seeking both convenience and community.

This impressive five-bedroom detached family home in Poplar Grove, Ryton-on-Dunsmore offers spacious living, modern comforts, and a superb location.

A welcoming hallway leads to a cloakroom, separate lounge and dining room leading to conservatory, and a beautifully fitted kitchen with utility room, while an integrated store room, provides additional practicality. Upstairs there are five well-proportioned bedrooms, two with ensuite shower rooms, along with family bathroom. Outside, the front features a lawn and generous driveway with ample parking while the rear garden is a true gem—well laid out, low maintenance, and perfect for family enjoyment.

This property offers the perfect blend of modern family living and village lifestyle, with excellent private schools, strong transport links with easy commute to Milton Keynes and London via A45 and M1 and countryside amenities all close by, making Poplar Grove in Ryton-on-Dunsmore an ideal setting for families seeking both convenience and community.

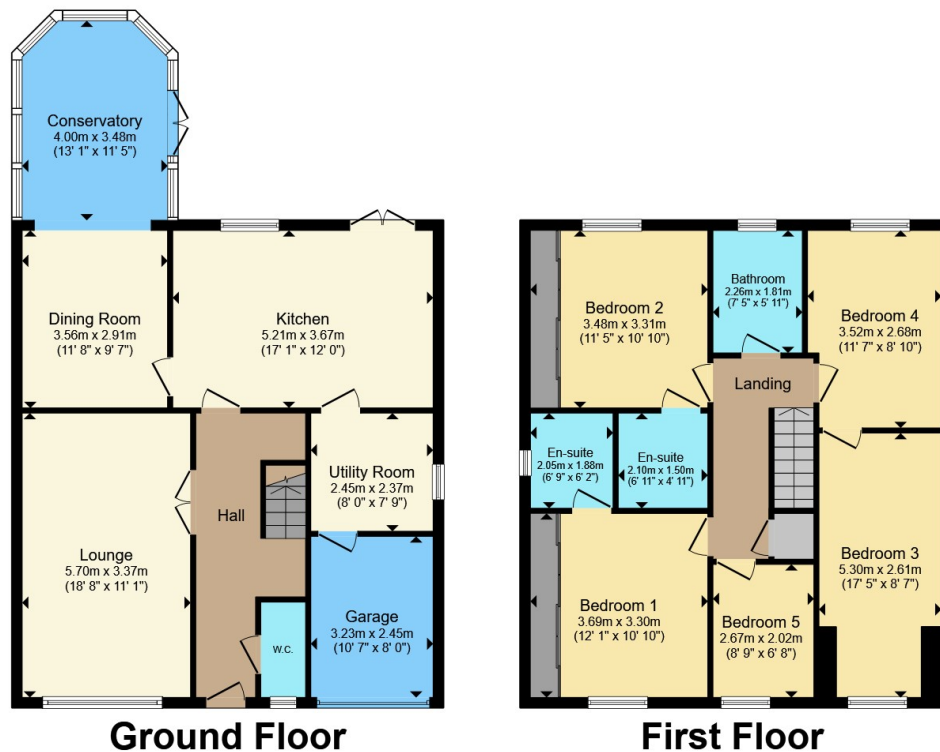
This impressive five-bedroom detached family home in Poplar Grove, Ryton-on-Dunsmore offers spacious living, modern comforts, and a superb location.

A welcoming hallway leads to a cloakroom, separate lounge and dining room leading to conservatory, and a

beautifully fitted kitchen with utility room, while an integrated store room, provides additional practicality. Upstairs there are five well-proportioned bedrooms, two with ensuite shower rooms, along with family bathroom. Outside, the front features a lawn and generous driveway with ample parking while the rear garden is a true gem—well laid out, low maintenance, and perfect for family enjoyment.

This property offers the perfect blend of modern family living and village lifestyle, with excellent private schools, strong transport links with easy commute to Milton Keynes and London via A45 and M1 and countryside amenities all close by, making Poplar Grove in Ryton-on-Dunsmore an ideal setting for families seeking both convenience and community.





Ground Floor

First Floor

Total floor area 165.6 m² (1,782 sq.ft.) approx

This floor plan is for illustrative purposes only. It is not drawn to scale. Any measurements, floor areas (including any total floor area), openings and orientation are approximate. No details are guaranteed, they cannot be relied upon for any purpose and they do not form part of any agreement. No liability is taken for any error, omission or misstatement. A party must rely upon its own inspection(s). Powered by www.propertybox.io



To view this property please contact Atkinson Stilgoe on

T 01926 857 461

E kenilworth@atkinsonstilgoe.co.uk

29 Warwick Road
KENILWORTH CV8 1HN

EPC Rating: C Council Tax
Band: F

view this property online atkinsonstilgoe.co.uk/Property/KEN305365

Tenure: Freehold



1. MONEY LAUNDERING REGULATIONS Intending purchasers will be asked to produce identification documentation at a later stage and we would ask for your co-operation in order that there will be no delay in agreeing the sale. 2. These particulars do not constitute part or all of an offer or contract. 3. The measurements indicated are supplied for guidance only and as such must be considered incorrect. Potential buyers are advised to recheck measurements before committing to any expense. 4. We have not tested any apparatus, equipment, fixtures, fittings or services and it is in the buyers interest to check the working condition of any appliances.

Atkinson Stilgoe is a trading name of Connells Residential which is registered in England and Wales under company number 1489613. Registered Office is Cumbria House, 16-20 Hockliffe Street, Leighton Buzzard, Bedfordshire, LU7 1GN. VAT Registration Number is 500 2481 05.

See all our properties at www.atkinsonstilgoe.co.uk | www.rightmove.co.uk | www.zoopla.co.uk

Property Ref: KEN305365 - 0010