



Thamesgate Close, Richmond, TW10

Approximate Area = 1145 sq ft / 106.3 sq m
 Garage = 161 sq ft / 14.9 sq m
 Total = 1306 sq ft / 121.2 sq m

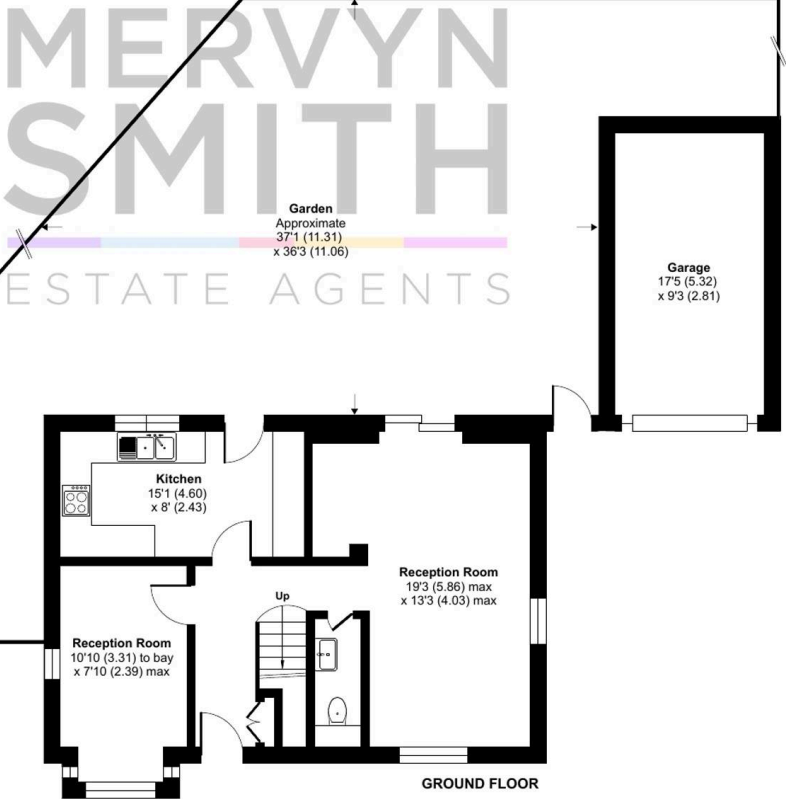
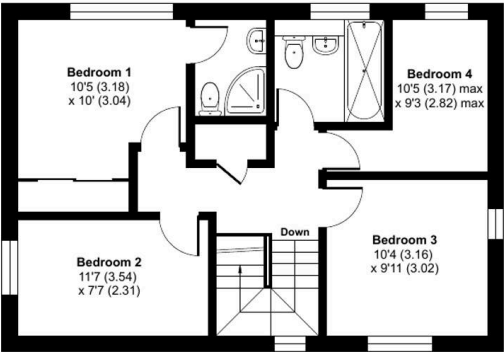
For identification only - Not to scale

- Spacious 4 BEDROOM 2 BATHROOM 2 RECEPTION DETACHED HOUSE with wide and sunny SOUTHWESTERLY GARDEN + separate GARAGE + driveway parking. Offering lots of potential to remodel and extend further!
- Spacious triple aspect main though reception room over 19 ft with patio doors to garden : 2nd double aspect reception room with front bay.
- Family bathroom : Ensuite bathroom to main bedroom : Ground floor WC
- All double gazed : Gas central heating system.
- Prominent location on a small tranquil private estate to the side of Ham Riverside Lands. Near the path to the riverside and pedestrian/cycle bridge over the river at Teddington Lock.
- Wide garden over 37 ft x 36 ft at max with patio, main grassed area and gate between the house and garage.
- Brick and block garage with up and over door and pitched roof : Off street parking on the driveway.
- The property requires a general cosmetic facelift but is priced accordingly and offers lots of space, scope to expand and an attractive location.

Council Tax band: F

Tenure: Freehold

EPC Energy Efficiency Rating: D



Floor plan produced in accordance with RICS Property Measurement 2nd Edition, Incorporating International Property Measurement Standards (IPMS2 Residential). © nchecon 2026. Produced for Acres And West LTD (Mervyn Smith Estate Agents). REF: 1447301



Hall

Part glazed entrance door to L shaped hallway with laminate floor, understair store cupboard, radiator, door to cloakroom.

Ground Floor Cloakroom

WC, wash hand basin with tile splashback, frosted double glazed window.

Main Through Reception Room

Tripel aspect room with double glazed window to front and side and raer sliding double galzded patio doors to garden. Laminate floor, radiators.

Reception 2

Double glazed box bay to front aspect, double glazed side window, radiator.

Kitchen

Units fitted at eye and base level, worktops and tile splashbacks, inset one and a half bowl sink unit, inset hob with fitted hood over, inbuilt double oven, spaces for fridge freezer and washing machine, laminate floor, wall mounted boiler, radiator, breakfast bar, double glazed window and door to garden.



1st floor Landing

Dog leg staircase from hall to 1st floor landing, trap to loft, door to airing cupboard housing hot water cylinder with slatted shelving over.

Bedroom 1 (left rear)

Double glazed window overlooking garden, sliding doors to inbuilt wardrobe cupboards, radiator, door to en suite.

En Suite

Walk in shower enclosure, wash hand basin with cabinet under, WC, tiled walls, frosted double glazed window.

Bedroom 2 (front left)

Double glazed window to front, radiator.

Bedroom 3 (front right)

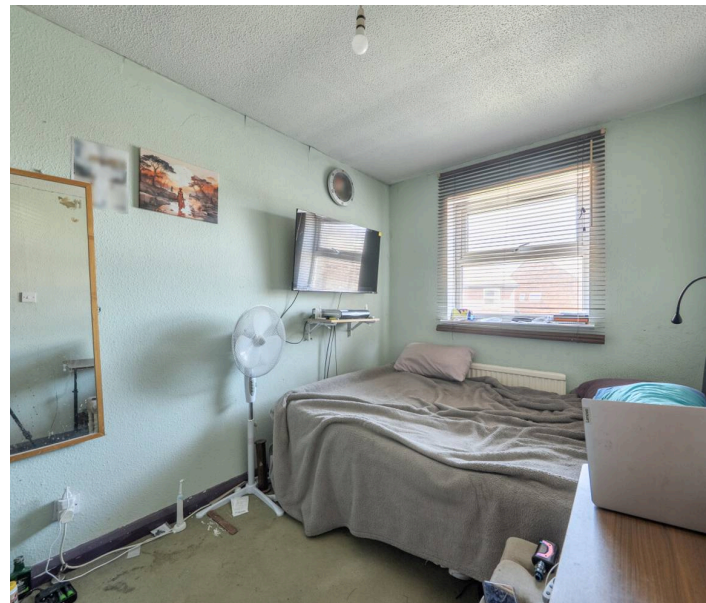
Double glazed windows to front and side, radiator.

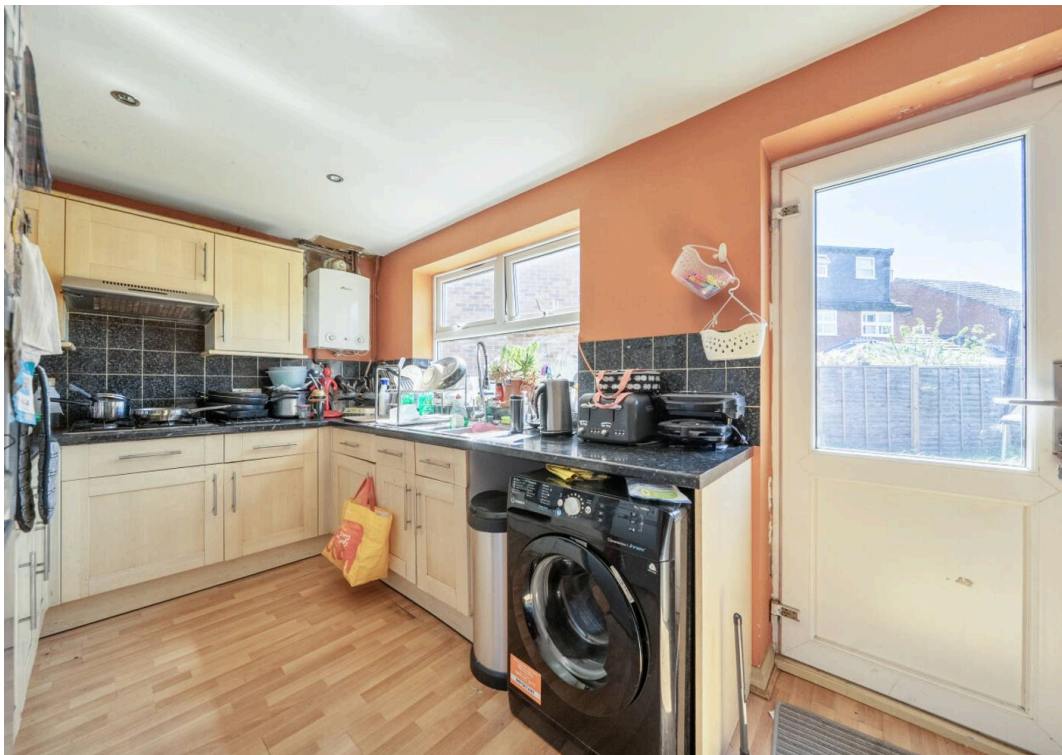
Bedroom 4 (rear right)

Double glazed window to rear, radiator.

Family Bathroom

Panel enclosed bath, shower screen and mixer, WC, pedestal wash hand basin, heated towel rail, tiled walls, frosted double glazed window.





Front Garden

Mainly grassed.

Rear Garden

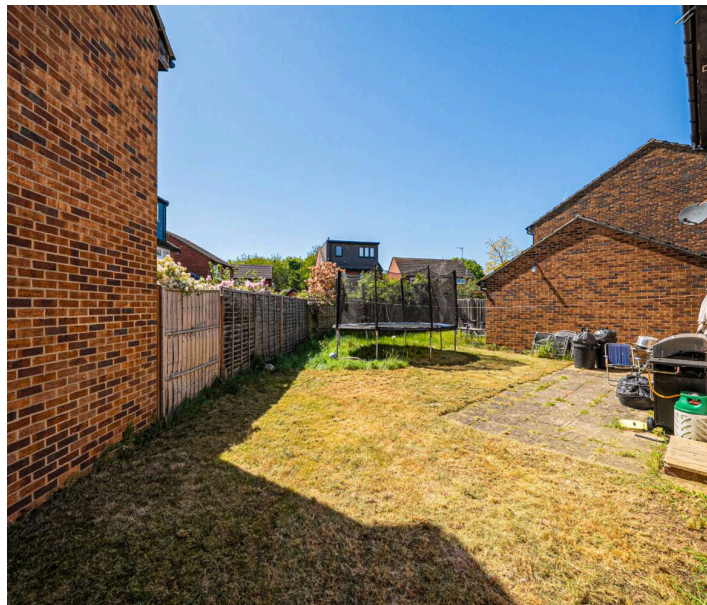
Paved patio to immediate rear of house, main area grassed, right side gate between house and garage.

Garage

Brick and block garage over 17 ft with up and over door and pitched roof.

Driveway

Hard standing off street parking on approach to garage.





Mervyn Smith

315 Richmond Road, Kingston Upon Thames - KT2 5QU

020 8549 5099 • mail@mervynsmith.co.uk • <http://www.mervynsmith.co.uk/>

This document is for informational purposes only and does not constitute legal or financial advice. While we strive to ensure accuracy, we do not accept liability for errors or omissions. Buyers and sellers should seek independent professional advice before making any decisions. Property details are subject to change and should be independently verified.