

Harrington Gardens, SW7

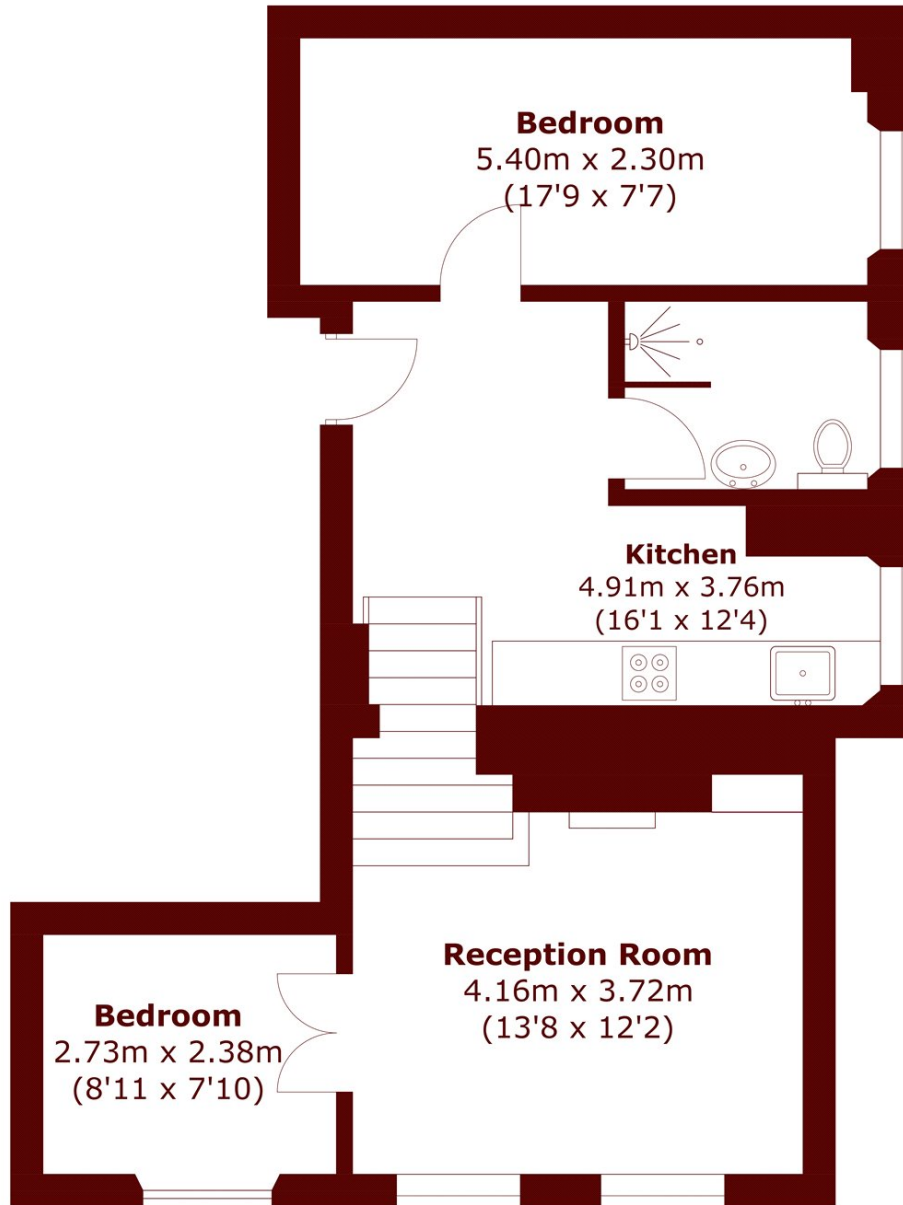
£784 per week



- Two Bedrooms
- One Bathroom

- Communal Gardens
- Excellent Location

- Period Building
- Excellent Storage



Total area (approx.): 56.6 sq. m (609.2 sq. ft)

Marsh & Parsons Chelsea

Rawlings House, 2A Milner
Street, London, SW3 2PU
020 7590 0800