



Connells

Woottons Court, Stoney Croft
Cannock



Hallway

Having access to all rooms and storage cupboard

Living Room

Having a double glazed window, two ceiling light points, carpeted flooring and a door into the kitchen

Kitchen/Diner

Being a fitted kitchen with a range of wall, base and drawer units with laminate work surfaces over and having tiled splash-backs, sink/drainer, integral oven with induction hob and extractor hood, plumbing, space for appliances, space for dining table and a double glazed window



Bedroom

Having a double glazed window, ceiling light point and carpeted flooring

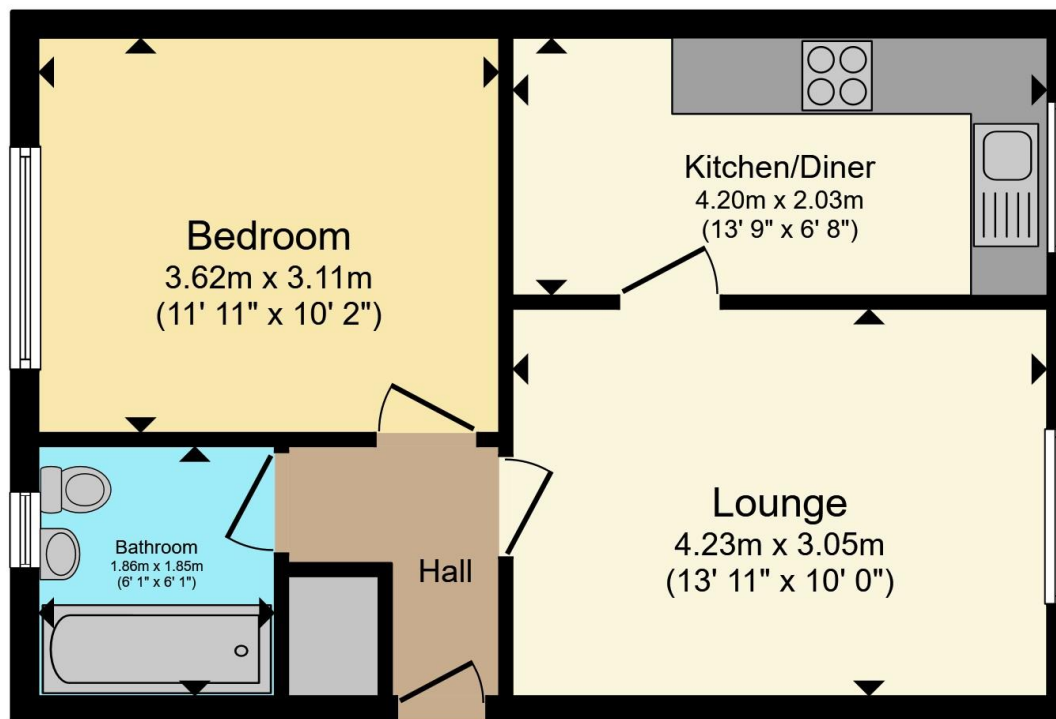
Bathroom

Having a double glazed window, WC, wash hand basin, shower cubicle, laminate flooring, chrome towel radiator and ceiling light point









Total floor area 41.0 m² (442 sq.ft.) approx

This floor plan is for illustrative purposes only. It is not drawn to scale. Any measurements, floor areas (including any total floor area), openings and orientation are approximate. No details are guaranteed, they cannot be relied upon for any purpose and they do not form part of any agreement. No liability is taken for any error, omission or misstatement. A party must rely upon its own inspection(s). Powered by www.propertybox.io



To view this property please contact Connells on

T 01543 500923
E cannock@connells.co.uk

10-12 Wolverhampton Road
 CANNOCK WS11 1AH

EPC Rating: D Council Tax
 Band: A

Service Charge: 840.00 Ground Rent:
 Ask Agent

Tenure: Leasehold

view this property online connells.co.uk/Property/CNK108946

This is a Leasehold property with details as follows; Term of Lease 999 years from 16 May 2023. Should you require further information please contact the branch. Please Note additional fees could be incurred for items such as



1. MONEY LAUNDERING REGULATIONS Intending purchasers will be asked to produce identification documentation at a later stage and we would ask for your co-operation in order that there will be no delay in agreeing the sale. 2. These particulars do not constitute part or all of an offer or contract. 3. The measurements indicated are supplied for guidance only and as such must be considered incorrect. Potential buyers are advised to recheck measurements before committing to any expense. 4. We have not tested any apparatus, equipment, fixtures, fittings or services and it is in the buyers interest to check the working condition of any appliances.

Connells Residential is registered in England and Wales under company number 1489613, Registered Office is Cumbria House, 16-20 Hockliffe Street, Leighton Buzzard, Bedfordshire, LU7 1GN. VAT Registration Number is 500 2481 05.

See all our properties at www.connells.co.uk | www.rightmove.co.uk | www.zoopla.co.uk

Property Ref: CNK108946 - 0001