

# Castles

ASKING PRICE

**£1,780,000**

**Park Road**

London, N8 8JJ

Castles

## PROPERTY SUMMARY

This bright and spacious, five-bedroom family home offers generous and versatile living accommodation throughout, featuring a large double reception room, an additional lounge, and a spacious kitchen/diner-ideal for modern family living and entertaining.

Additional benefits include a utility room, a guest w.c. on the ground floor, an additional w.c. on the top floor, and a modern family bathroom. The property also features off-street parking and enjoys tranquil, uninterrupted views over the cricket grounds, with far-reaching vistas extending towards Queen's and Highgate Woods.

To the rear, a well-maintained South-West-facing garden provides the perfect setting for afternoon sunshine and al fresco dining.

Situated in a highly sought-after location with excellent local amenities, green spaces, and transport links nearby, this is a rare opportunity to acquire a home offering both space and serenity in a prime position.

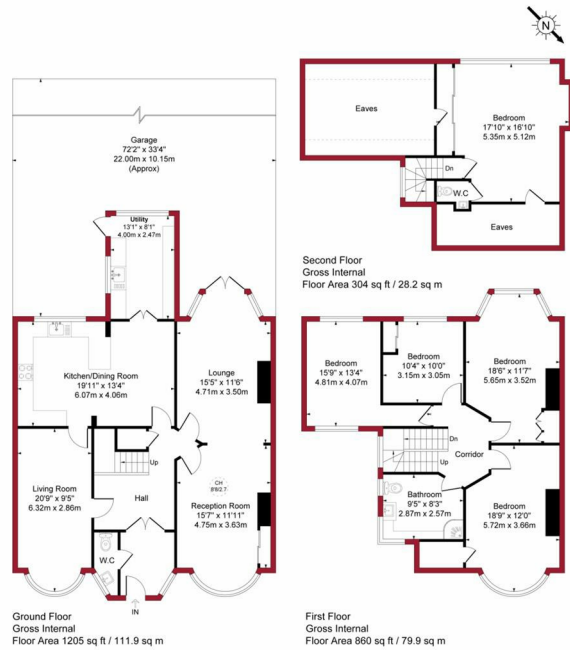
Local Authority: Haringey  
Council Tax band: G



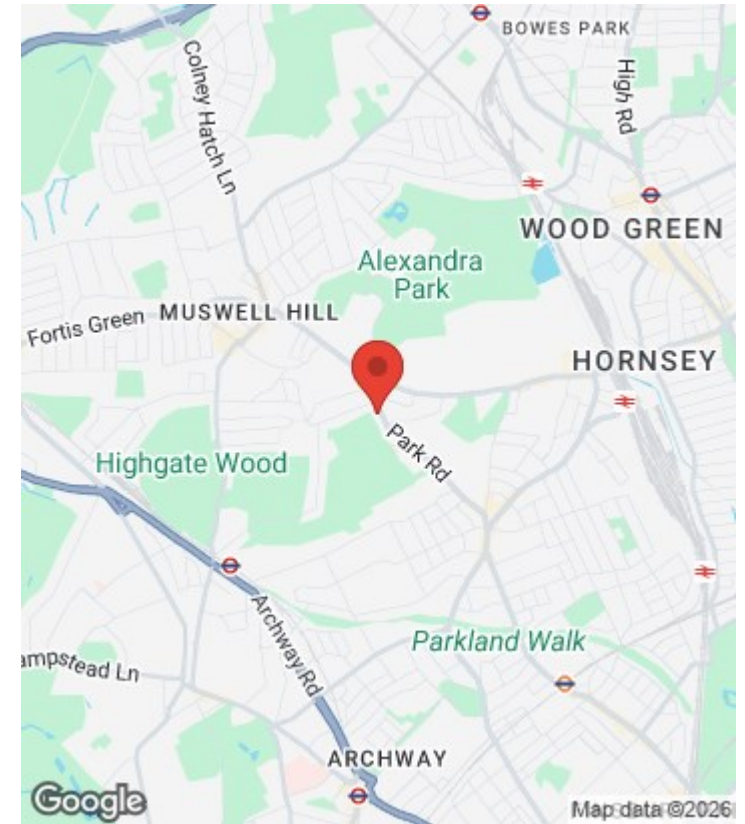
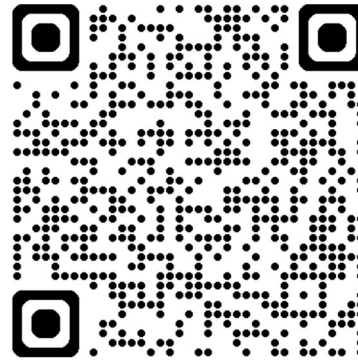


Park Road, London, N8

Approximate Gross Internal Area = 2369 sq ft / 220.0 sq m



For a guide to the area please scan this code for more information



House - Semi-Detached

Freehold

**Council:** Haringey

**Council Tax Band:** G



Floor plan produced in accordance with RICS Property Measurement 2nd Edition. Although Pink Plan Ltd ensures the highest level of accuracy, measurements of doors, windows and rooms are approximate and no responsibility is taken for error, omission or misstatement. These plans are for representation purposes only and no guarantee is given on the total square footage of the property within this plan. The figure icon is for initial guidance only and should not be relied on as a basis of valuation.



Agents Note: Whilst every care has been taken to prepare these particulars, they are for guidance purposes only. All measurements are approximate and are for general guidance purposes only and whilst every care has been taken to ensure their accuracy, they should not be relied upon and potential buyers/tenants are advised to recheck the measurements



**OFFICE ADDRESS**

12 Topsfield Parade  
Crouch End  
London  
N8 8PR

**OFFICE DETAILS**

020 8348 5515  
crouchend@castles.london  
<https://www.castles.london>

