



Bosman Drive, Windlesham

**Offers In Excess Of  
£625,000**



## Bosman Drive, Windlesham

This extended five bedroom, three bathroom home offers over 1540 sq.ft of accommodation towards the end of a cul-de-sac on the popular Snows Ride development in Windlesham. The property is being sold with no onward chain.

### FEATURES

- No onward chain
- Extended
- Covered entrance porch
- Brick block paved driveway
- Gas central heating
- Double glazing
- Easy access to junction 3 of the M3

### ACCOMODATION

- Entrance hall
- Downstairs cloakroom
- Kitchen/breakfast room
- Three reception rooms
- Utility room
- Conservatory
- Five bedrooms
- Three bath/shower rooms

### OUTSIDE

- Driveway parking
- South westerly facing low maintenance rear garden

### LOCAL AUTHORITY

Surrey Heath – band E

### EPC RATING

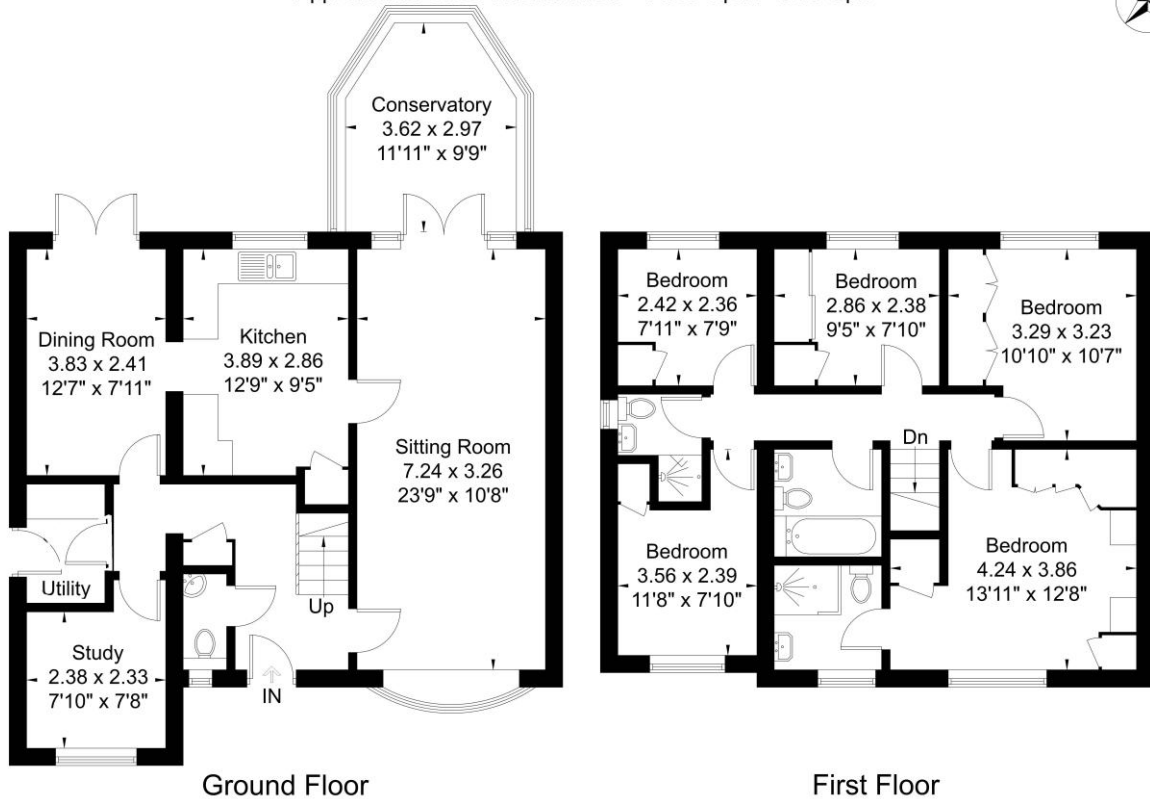
C





**Bosman Drive**

Approximate Gross Internal Area = 143.9 sq m / 1549 sq ft



Ground Floor

First Floor

Illustration for identification purposes only,  
measurements are approximate, not to scale.

**Disclaimer:** We wish to inform prospective purchasers that we have prepared these sales particulars as a general guide. We have not carried out a detailed survey, nor tested the services, appliances and specific fittings. Room sizes are approximate and rounded: they are taken between internal wall surfaces and therefore include cupboards / shelves, etc. Accordingly, they should not be relied upon for carpeting, curtains / blinds and kitchen equipment, whether fitted or not, are deemed removable by the vendor unless specifically itemized within these.

**Postcode for sat nav: GU20 6JN**

