



Oyster Wharf  
18 Lombard Road, SW11

CHESTERTONS









A fantastic two bedroom, two bathroom apartment set on the second floor on the bank of the River Thames with exquisite river views and private underground parking.

The property is comprised of a bright a spacious open plan kitchen / reception with direct access to one of your two private balconies framing breath taking westerly views of the Thames. The principal bedroom boasts an en-suite shower room, bespoke built-in wardrobes, and private access to the second balcony. A second large double bedroom benefits from use of the family bathroom.

The development benefits from a concierge, a residents only gym and a communal podium garden boasting direct riverbank access. The apartment also comes with an underground private parking space.

Battersea Square beckons just beyond your doorstep, brimming with local restaurants, charming bakeries, and unique independent shops. Rail links from Clapham Junction mainline station are a short walk away.

- Riverside Property
- 2 Double bedroom
- 2 Bathrooms
- 2 Balconies
- Fantastic Views
- Walkable to Clapham Junction Station

### £2,750 pcm

Additional tenant charges apply (fees apply to non-AST tenancies only)

Tenancy Agreement Fee: £300

References per Tenant/Guarantor: £60

Inventory check (approx. £100 – £250 inc. VAT)

[chestertons.co.uk/property-to-rent/applicable-fees](https://www.chestertons.co.uk/property-to-rent/applicable-fees)

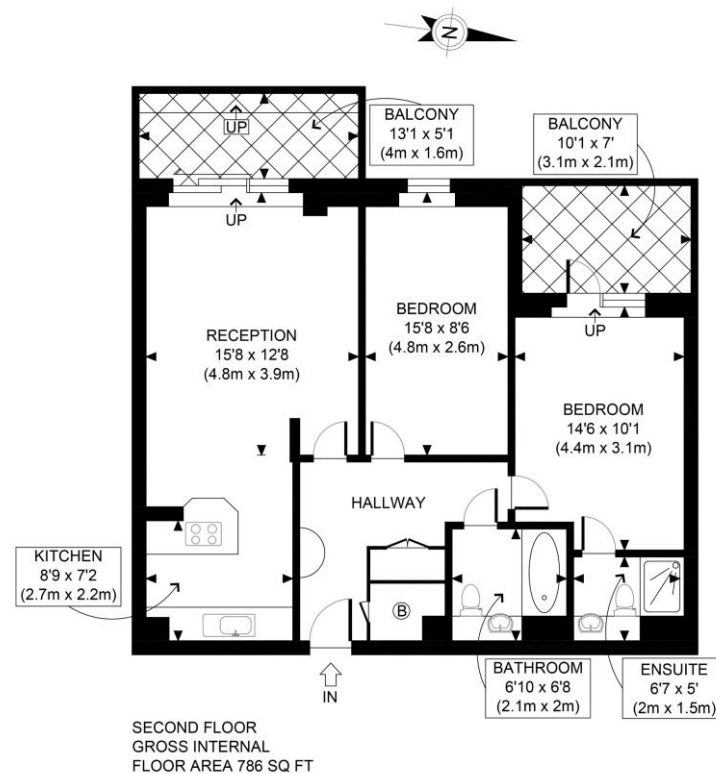
Score	Energy rating	Current	Potential
92+	A		
81-91	B		
69-80	C		
55-68	D		
39-54	E		
21-38	F		
1-20	G		
		78 C	85 B

**Minimum Term:** 12 months  
**Deposit Required:** £3,173.08  
**Local Authority:** Wandsworth  
**Council Tax Band:** F  
**EPC Rating:** C  
**Furnished**

### Chestertons Battersea Park & Nine Elms Lettings

62-64 Battersea Bridge Road  
 London  
 SW11 3AG

batterseapark@chestertons.co.uk  
 02030408269  
[chestertons.co.uk](https://www.chestertons.co.uk)



APPROX. GROSS INTERNAL FLOOR AREA 786 SQ FT / 73 SQM	
Disclaimer: Floor plan measurements are approximate and are for illustrative purposes only. While we do not doubt the floor plan accuracy and completeness, you or your advisors should conduct a careful, independent investigation of the property in respect of monetary valuation	
Lombard Road SW11	
date 27/08/20	
photoplan	

Chesterton UK Services Limited trading as Chestertons for themselves and for the vendor of this property whose agents they are, give notice that (i) these particulars do not constitute any part of an offer or contract, (ii) all statements contained within these particulars are made without responsibility on the part of Chestertons or the vendor, (iii) whilst made in good faith, none of the statements contained within these particulars are to be relied upon as a statement or representation of fact, (iv) any intending purchasers must satisfy themselves by inspection or otherwise as to the correctness of each of the statements contained within these particulars, (v) the vendor does not make or give either Chestertons or any person in their employment any authority to make or give representation or warranty whatsoever in relation to this property. Wide angle lenses may be used. ©Copyright Chestertons | Chesterton Global Ltd | Registered Office 40 Connaught Street, Hyde Park, London W2 2AB Registered Company Number 05334580.



This paper is  
100% recyclable