



SIBLEY PARES

CHARTERED SURVEYORS & ESTATE AGENTS

Durham Close

Maidstone, Kent, ME15 8DS

Guide Price £200,000 to £220,000

Durham Close

Maidstone, Kent, ME15 8DS

Key Features

- Well Presented Two Bedroom Maisonette
- Private Rear Garden With Additional Land
- Modern Fitted Kitchen
- Two Double Bedrooms
- Mote Park on your Doorstep
- Easy Reach of Maidstone Town Centre

Description

Situated on the edge of the picturesque grounds of Mote Park in Maidstone is this well presented two double bedroom maisonette, with the added benefit of a private rear garden and additional land.

This spacious property comprises entrance porch, stair case leading to the entrance hall with large storage cupboard and balcony, living room, dual aspect modern fitted kitchen with oven and hob, two double bedrooms and modern fully tiled bathroom with shower over bath.

The property also benefits from a great size private rear garden with a large shed and patio area with the remainder laid to lawn, leading to a good size second garden area laid to lawn, ample on street parking, gas central heating and double glazing throughout.

Lease Details

Length: 125 years from 21 October 1991

Service Charge (inc Ground Rent): £609.50pa



Durham Close

Maidstone, Kent, ME15 8DS

Location

Set a stone throw away from the beautiful Mote Park, with its scenic walks around the lake and Maidstone Leisure Centre, which means that you are within easy reach of plenty to do.

Maidstone Town Centre is within easy reach and you'll find a range of local amenities, schools, and parks within easy reach. Commuters will appreciate the excellent transport links, with Maidstone East and Maidstone West train stations nearby, providing direct routes to London and other major cities.

■ EPC Rating C

■ Council Tax Band B

■ Maidstone Borough Council

■ For Broadband Speed Refer to Ofcom Website

For all Viewings and Enquiries contact:



Mr Mitchell Bourner MNAEA MARLA
mitchell.bourner@sibleypares.co.uk



Mr Marcus Monger
Marcus.monger@sibleypares.co.uk



SIBLEY PARES

CHARTERED SURVEYORS & ESTATE AGENTS

01622 673086

sibleypares.co.uk



SIBLEY PARES

CHARTERED SURVEYORS & ESTATE AGENTS



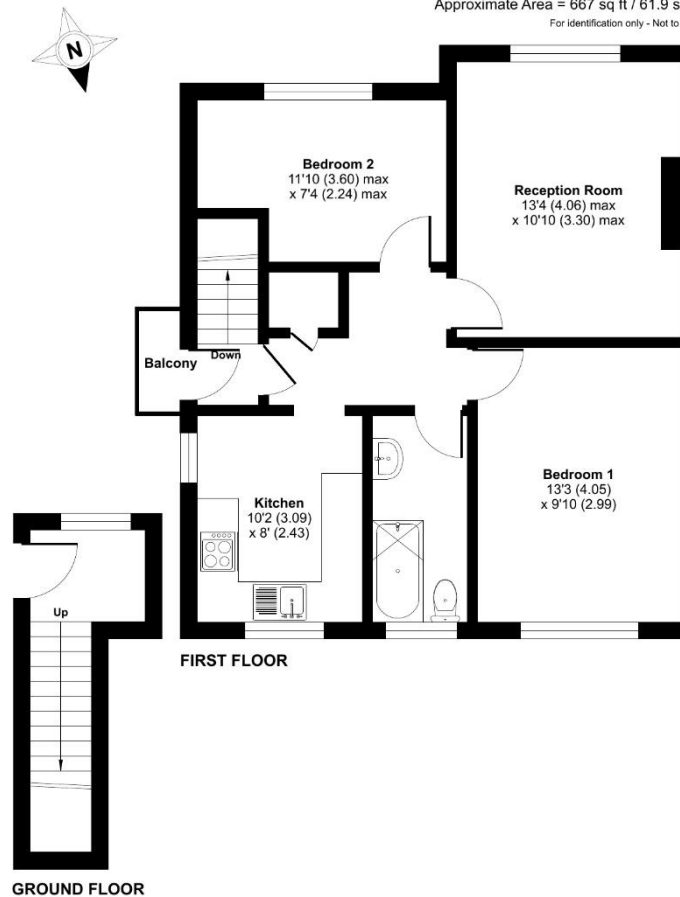


Floorplan and Dimensions

Durham Close, Maidstone, ME15

Approximate Area = 667 sq ft / 61.9 sq m

For identification only - Not to scale



 Floor plan produced in accordance with RICS Property Measurement 2nd Edition, Incorporating International Property Measurement Standards (IPMS2 Residential). © nichecom 2025. Produced for Sibley Pares Estate Agents. REF: 1305549

NOTE: Rental, prices or any other charges are inclusive of VAT unless otherwise stated.
MISREPRESENTATION ACT 1967. These particulars are believed to be correct, their accuracy cannot be guaranteed and are expressly excluded from any other contract. Any intending purchaser must satisfy himself by inspection or otherwise as to the correctness of each of the statements contained in these particulars. No fittings, appliances or services mentioned have been tested by Sibley Pares. Please note that in accordance with Money Laundering Regulations, we are now required to obtain proof of identity for purchasers.



1 Ashford Road, Maidstone, Kent ME14 5BJ
sibleypares.co.uk | Maidstone (01622) 673086 | Ashford (01233) 629281

Partners: Sarah Raggett, BSc (Hons) MRICS | Phillip Hubbard, BA (Hons) MRICS
Sibley Pares Chartered Surveyors is a trading name of Sibley Pares LLP

Registered in England and Wales No: OC400776. | Registered as above. | VAT Reg No: 218 5130 30.