



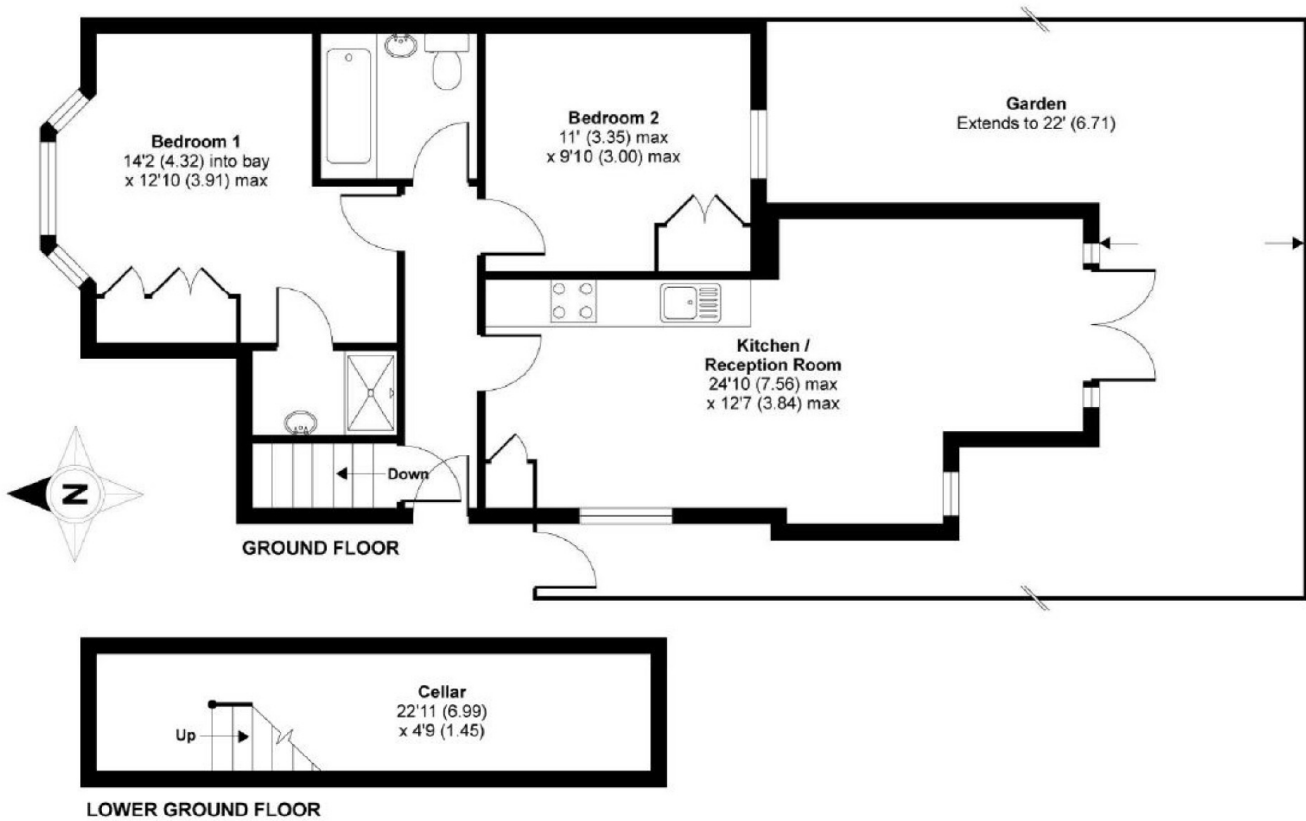
Rossiter Road, SW12

£2,300 PCM

Situated in the heart of Central Balham, this ground floor two bedroom maisonette has two bathrooms, an open plan kitchen reception room and a large rear garden. This is suitable for professional sharers or a couple.

- Ground Floor Maisonette
- Open Plan Kitchen Reception Room
- Two Modern Fitted
- Two Double Bedrooms
- Private Garden
- Furnished

For further information on the costs associated with renting a property, please pop into our office or visit our website.



APPROX. GROSS INTERNAL FLOOR AREA 763 SQ FT 70.8 SQ METRES (INCLUDES RESTRICTED HEAD HEIGHT)

Rossiter Road, London,

Copyright nichecom.co.uk 2014 Produced for Jacksons the Independent Estate Agents REF : 663000

Jacksons Balham
8-11 Balham Station Road
London
SW12 9SG
020 8675 6565
balham.lettings@jacksonsestateagents.com

Energy Rating: We aim to make our particulars both accurate and reliable. However they are not guaranteed; nor do they form part of an offer or contract. If you require clarification on any points then please contact us, especially if you're traveling some distance to view. Please note that appliances and heating systems have not been tested and therefore no warranties can be given as to their good working order.