



2 Southfield, West Overton
£1,200 pcm

m^cfarlane
property.com



2 Southfield

West Overton, Marlborough

We are delighted to present this beautiful mid terraced property set within the lovely village of West Overton.

This beautifully bright and welcoming home offers generous living space, perfect for comfortable everyday living and entertaining. The large living room benefits from plenty of natural light, creating a warm and inviting atmosphere.

The spacious kitchen provides ample room for a dining table, making it an ideal space for cooking and hosting. The kitchen flows seamlessly into a conservatory, which features a sliding door leading out to the garden—complete with a patio area, a manageable lawn, and a garden shed for extra storage.

Upstairs, the property boasts two double bedrooms, including a main bedroom with a large built-in wardrobe, offering excellent storage. A third single bedroom provides flexibility for a guest room, home office, or nursery. The bathroom includes both a bath with a shower head included.

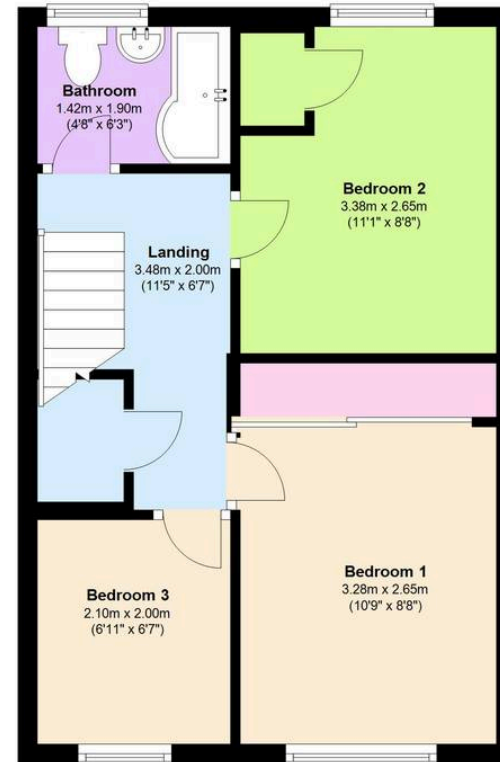
With reasonable-sized rooms throughout and natural light in abundance, this well-maintained home is perfect for someone looking for space, comfort, and functionality.



Ground Floor



First Floor



This floorplan is to be used as guidance only. The accuracy of these plans cannot be verified.
Plan produced using PlanUp.

McFarlane Sales & Lettings

McFarlane Sales & Letting, 106 High Street - SN8 1LT

01672 514380 • marlborough@mcfarlaneproperty.com • www.mcfarlaneproperty.com/

mcfarlane
property.com