



North Lane, Canterbury CT2 7EB

£1,200 Per Calendar Month

Located in the heart of historic Canterbury, available to rent is this recently refurbished two bedroom cottage on North Lane with a share of a small courtyard garden. Properties in the area are rarely available for long and as such an early call is strongly advised to avoid disappointment!

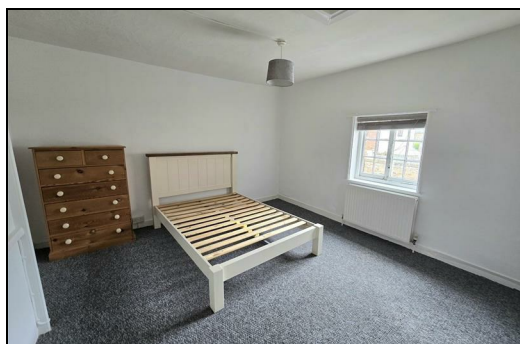
Measurements:

Lounge 11'8 x 11'5
Dining Room 11'7 x 11'4
Kitchen 11'1 x 6'7
Shower Room 6'2 x 6'1
Bedroom 13'9 x 11'8
Bedroom 11'5 x 12'6

CR Real Estate are part The Ombudsman Redress Scheme and are a member of the Propertymark Client Money Protection Scheme. Tenant deposits are protected by the Tenancy Deposit Scheme. For more information, please contact us.

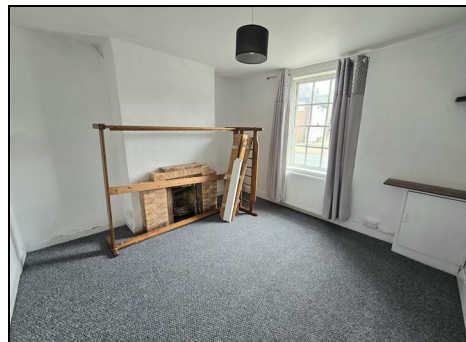
Client Money Protection is provided by: Client Money Protect. Scheme Ref: CMP004209

Independent redress is provided by: The Property Ombudsman (TPO). Membership Number: E01687



Energy Efficiency Rating		
	Current	Potential
Very energy efficient - lower running costs		
(92 plus) A		
(81-91) B		
(69-80) C		
(55-68) D		
(39-54) E		
(21-38) F		
(1-20) G		
Not energy efficient - higher running costs		
England & Wales	EU Directive 2002/91/EC	

Environmental Impact (CO ₂) Rating		
	Current	Potential
Very environmentally friendly - lower CO ₂ emissions		
(92 plus) A		
(81-91) B		
(69-80) C		
(55-68) D		
(39-54) E		
(21-38) F		
(1-20) G		
Not environmentally friendly - higher CO ₂ emissions		
England & Wales	EU Directive 2002/91/EC	



ESTATE AGENCY : REDEFINED

