



Guide Price
£230,000

Leasehold

2x  2x  1x 

**Beaconsfield House, St.
Peter's Road,
Broadstairs, Kent, CT10**

OVER 60?

Secure this property
for up to **59% less!**

Wards
Helping you move forwards



Main features

- Chain free
- Recently refurbished to a high standard
- Ready to move into, spacious throughout
- Allocated parking space
- Walking distance to town centre and Viking Bay sandy beach

Accommodation

GROUND FLOOR

Hallway

Bathroom

Bedroom 1 : 12'7 x 11'3 (3.84m x 3.43m)

En-suite shower

Bedroom 2 : 10'9 x 9'3 (3.28m x 2.82m)

Lounge: 12'9 x 12'0 (3.89m x 3.66m)

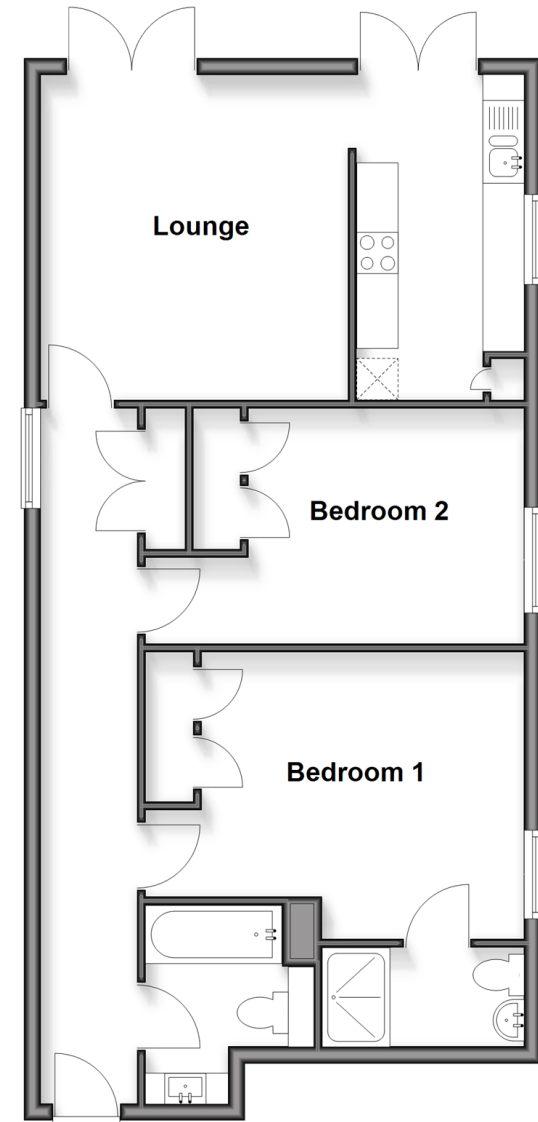
Kitchen: 12'7 x 6'6 (3.84m x 1.98m)

OUTSIDE

Allocated Parking Space

Ground Floor

Approx. 70.4 sq. metres (757.3 sq. feet)



Call Broadstairs - 01843 602546 ■ wardsofkent.co.uk

■ Through a Homewise Home For Life Plan people aged 60+ can secure this property for up to 59% less, by purchasing a Lifetime Lease



10229794/20260409/LM/LM