



Damac Tower, 67 Bondway,
, SW8

Asking Price £625,000, Leasehold

NAPIER WATT

T: 0207 935 0011
E: enquiries@napierwatt.co.uk
W: napierwatt.co.uk

35 Berkeley Square, Mayfair, London, W1J 5BF







Description

Damac Tower is an impressive landmark in London with far-reaching views over the skyline, enhanced by the floor to ceiling picture windows. This 1-bedroom flat is on the 12th floor and the reception room faces east with a super winter garden. The finish and attention to detail in this flat is second to none, combined with the state-of-the-art amenities, and 24-hour porterage. A huge gym, pool, and spa. An equally impressive soft play area for children and a communal roof garden for residents only.

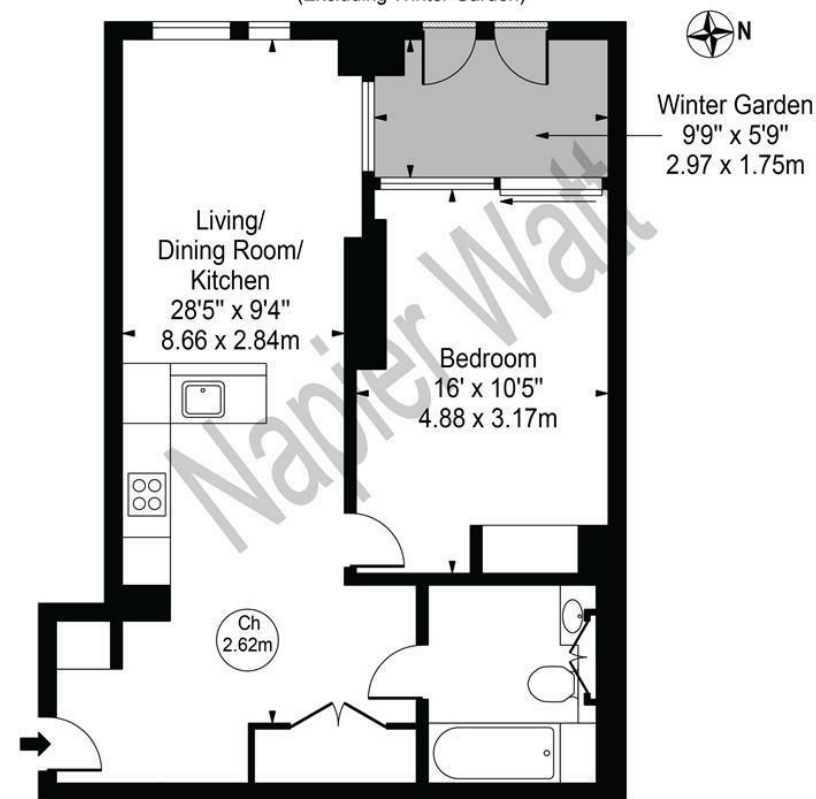
Key Features

- 24 HOUR PORTER
- CHILDREN SOFT PLAY AREA
- PORTER
- SAUNA
- COMMUNAL ROOF GARDEN
- GYMNASIUM
- WINTER GARDEN

Terms

Leasehold: 95 Years Remaining.
Service Charge: £8,889.18 PA

Damac Tower
Approx. Total Internal Area 664 Sq Ft - 61.69 Sq M
(Including Winter Garden)
Approx. Gross Internal Area 606 Sq Ft - 56.30 Sq M
(Excluding Winter Garden)



Twelfth Floor

For Illustration Purposes Only - Not To Scale

This floor plan should be used as a general outline for guidance only and does not constitute in whole or in part an offer or contract. Any intending purchaser or lessee should satisfy themselves by inspection, searches, enquiries and full survey as to the correctness of each statement. Any areas, measurements or distances quoted are approximate and should not be used to value a property or be the basis of any sale or let.

IMPORTANT: We would inform prospective purchasers that these sales particulars have been prepared as a general guide only. A detailed survey has not been carried out, nor the services, appliances and fittings tested. Room sizes should not be relied upon for furnishing purposes and are approximate. If floor plans are included, they are for guidance only and illustration purposes only and may not be to scale. If there are any important matters likely to affect your decision to buy, please contact us before viewing the property.