



Malthouse Drive, W4
£1,375,000

Dexters



Malthouse Drive, W4

Offered to the market with no onward chain and situated within a popular gated development along the River Thames with direct and uninterrupted views of the river, this sizeable and very well-presented five bedroom, three bathroom townhouse features a private garden, off-street parking and garage

This excellent family home features a spacious ground floor with a separate kitchen, underfloor heating, and access to a private landscaped garden.

The first floor comprises a second reception room or bedroom, a large double bedroom with built-in storage, and a separate family bathroom. On the second floor, you will find a master bedroom with an en suite bathroom, two additional bedrooms, and a separate utility room.

The third floor continues to impress with another large double bedroom with eaves storage and an en suite bathroom. Additionally, the property includes a driveway with space for two cars and a garage.

Malthouse Drive is a gated development situated along the river Thames offering access to the A316, Chiswick railway station and the A4/M4.

Features

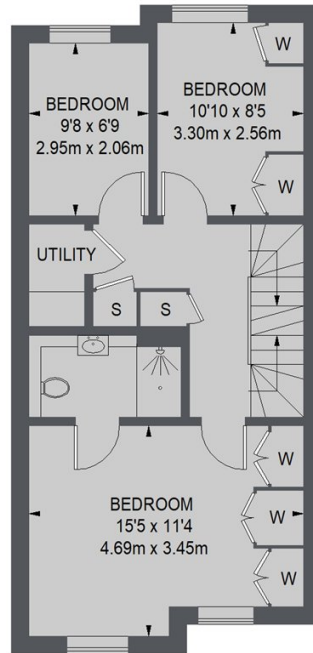
- Five Bedrooms
- Three Bathrooms
- Off-Street Parking
- Garage
- Uninterrupted River Views
- Gated Development



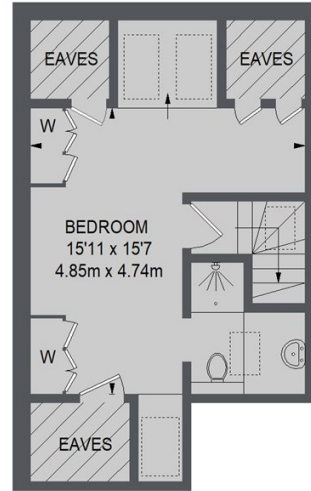




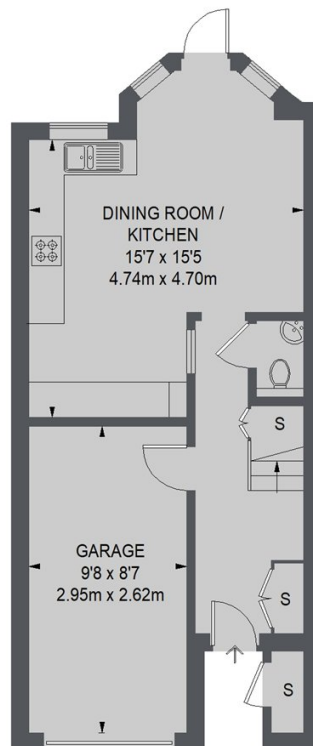
Malthouse Drive, London, W4



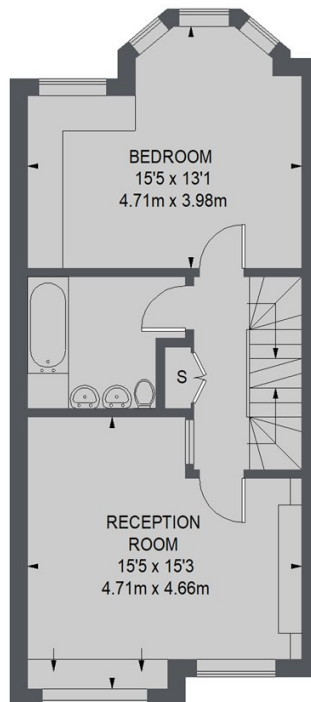
SECOND FLOOR



THIRD FLOOR



GROUND FLOOR



FIRST FLOOR

TOTAL APPROX. FLOOR AREA
(EXCLUDING EAVES & INCLUDING GARAGE)
1850 SQ. FT. (171.9 SQ. M.)