

**LONDON
VICTORIA
GROUPS** 



Catalina House, 4 Canter Way

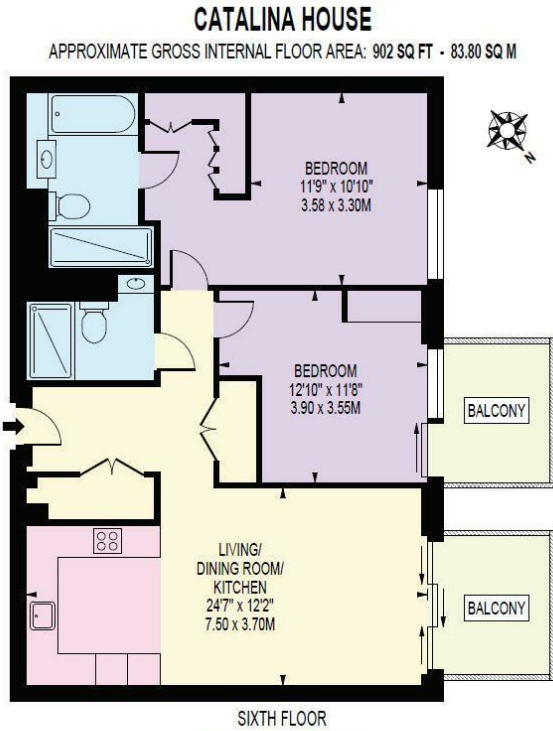
, London E1 8QE

- State-of-the-art gym
- Private cinema
- Landscaped rooftop gardens
- Cloes to Aldgate East
- EPC-B
- Luxury swimming pool and spa
- Residents' lounge
- 24/7 concierge and security service
- High-quality communal spaces and lifestyle amenities
- CTB-F

£4,334 PCM



Local Authority **Tower Hamlets**
Council Tax Band **F**
EPC Rating **B**



FOR ILLUSTRATION PURPOSES ONLY
THE FLOOR PLAN SHOULD BE USED AS A GENERAL OUTLINE FOR GUIDANCE ONLY AND DOES NOT CONSTITUTE IN WHOLE OR IN PART AN OFFER OR CONTRACT.
ANY INTENDING PURCHASER OR LESSEE SHOULD SATISFY THEMSELVES BY INSPECTION, SEARCHES, ENQUIRIES AND FULL SURVEY AS TO THE CORRECTNESS OF EACH STATEMENT.
ANY AREAS, MEASUREMENTS OR DISTANCES QUOTED ARE APPROXIMATE AND SHOULD NOT BE USED TO VALUE A PROPERTY OR BE THE BASIS OF ANY SALE OR LET.

London Office Office
Spaces Victoria, 25 Wilton Road, Pimlico,
London, SW1V 1LW

Contact
020 3084 3094
XL@londonvictoriagroups.co.uk
www.londonvictoriagroups.co.uk

Agents Note: Whilst every care has been taken to prepare these particulars, they are for guidance purposes only. All measurements are approximate and for general guidance purposes only and whilst every care has been taken to ensure accuracy, they should not be relied upon and potential buyers/tenants are advised to recheck the measurements.

