



6 Morris Mews Rugby Rise, High Wycombe

£264,500



Robertsons

## 6 Morris Mews Rugby Rise

High Wycombe, High Wycombe

A well appointed second floor apartment built by Banner Homes in 2004, in this popular development with views over Kingsmead playing fields. Entrance hall, Kitchen, Sitting/Dining room with balcony, Two bedrooms, Bathroom, Gas central heating, Double glazing, Communal gardens, Allocated parking.

Council Tax band: C

Tenure: Leasehold





### **Entrance hall**

Radiator, cupboard housing Ideal gas fired central heating boiler and space and plumbing for washing machine, security entry phone, built in storage cupboard, wall light point

### **Sitting/Dining room**

Door to BALCONY with views over Kingsmead playing fields, radiator, wall thermostat, windows to side and rear, archway to Kitchen

### **Kitchen**

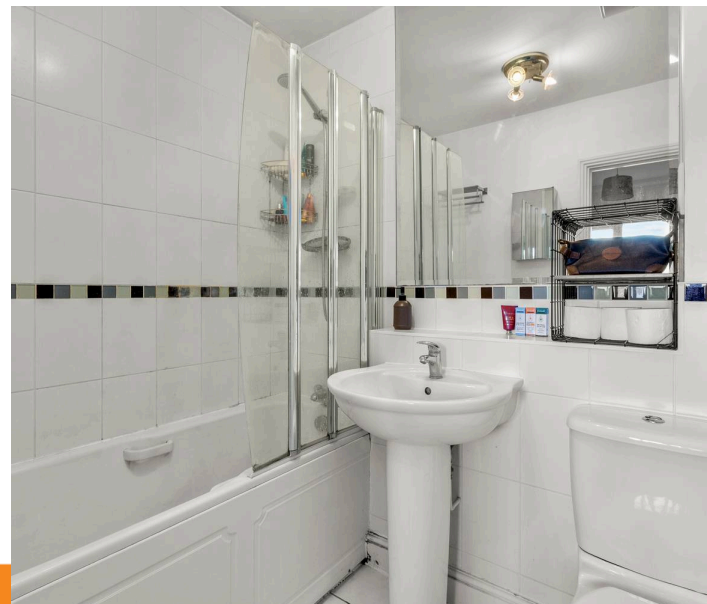
Fitted with a range of eye and base level units incorporating stainless steel sink unit with mixer tap and drainer, built in Hotpoint oven, fitted four ring Hotpoint gas hob with extractor over, space for fridge/freezer, built in Bosch dishwasher, part tiled walls, tiled flooring, window to rear

### **Bedroom 1**

With built in wardrobe, radiator, window to front with views

### **Bedroom 2**

With built in double wardrobe, radiator, window to front with views



### **Bathroom**

White suite comprising panelled bath with mixer tap and Aqualisa shower over, low level W.C., wash hand basin with mixer tap, part tiled walls, tiled flooring, radiator

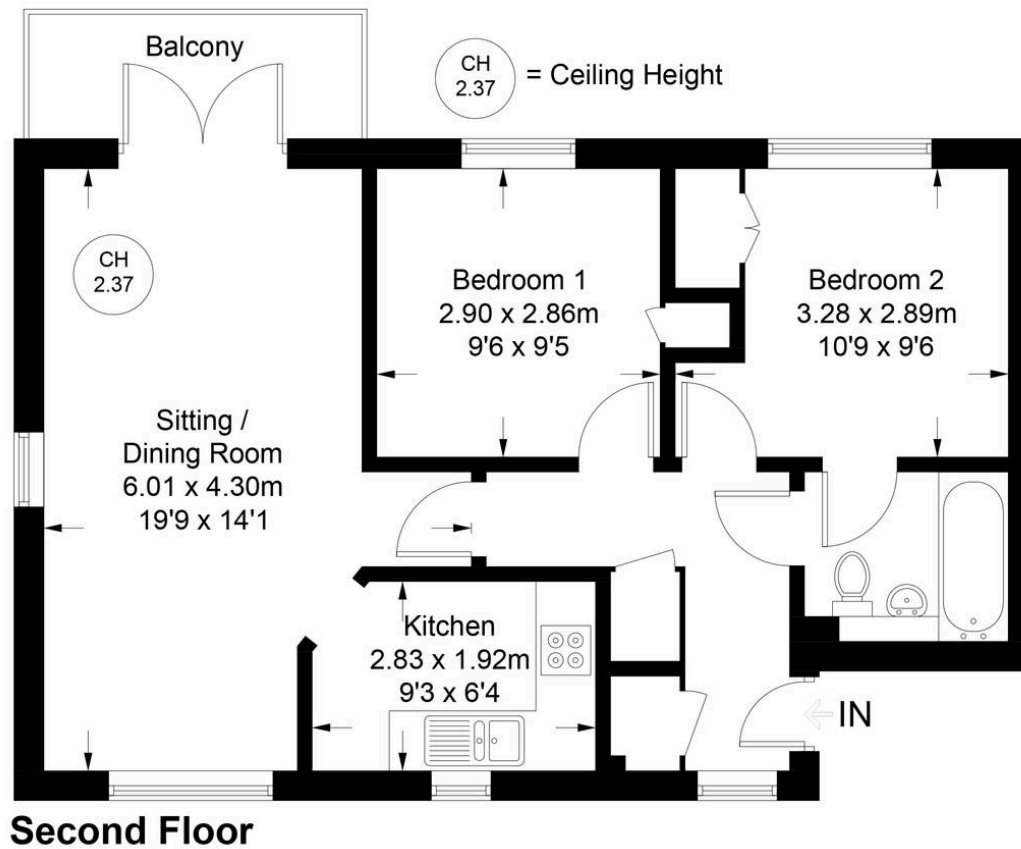
### **Communal gardens**

Principally laid to lawn

### **Allocated parking**

There is one allocated parking space close to the flat and further visitors parking

Approximate Gross Internal Area = 56.2 sq m / 605 sq ft



Floor Plan produced for Robertsons by Media Arcade ©.  
Illustration for identification purposes only. Window and door openings are approximate. Whilst every attempt is made to assure accuracy in the preparation of this plan, please check all dimensions, shapes and compass bearings before making any decisions reliant upon them.

## Robertsons Estate Agents

Swains House, Swains Lane, Flackwell Heath - HP10 9BN

01628 533373

flackwellheath@robertsonsestateagents.co.uk

www.robertsonsestateagents.co.uk/



**Robertsons**