



Maitland Place

Bowerhill, Melksham SN12 6XG

- South facing garden
- En-suite in main bedroom
- NHBC warranty over 5 years
- Bus stops at street end
- Walk to schools nearby
- Modern kitchen/diner space
- Parking for two cars
- Green space on doorstep
- Popular Bowerhill location
- Pub and shop close

£300,000 Freehold



Hall

External door, radiator, stairs to first floor and door to living room.

Living Room

14'1" x 12'2"

Window to front elevation, radiator and door to kitchen/diner.

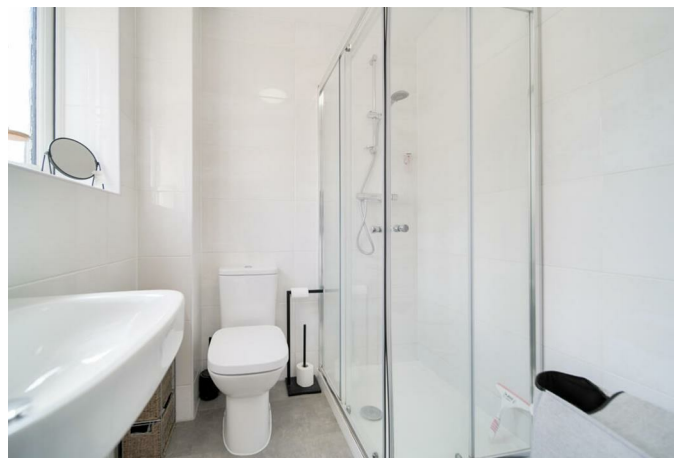
Kitchen/Diner

9'5" x 15'6"

Fitted with a matching range of base and eye level units with worktop space over, 1+1/2 bowl stainless steel sink, integrated fridge/freezer, slimline dishwasher, washing machine and microwave, four ring induction hob and raised oven, window to rear elevation, radiator, door to WC and under stairs storage.

WC

Fitted with two piece suite comprising wash hand basin and WC with radiator.



Landing

Radiator with doors to bedrooms and bathroom.

Bedroom One

11'1" x 9'10"

Window to front elevation, fitted wardrobes, radiator and door to en-suite.

En-suite

Fitted with three piece suite comprising shower enclosure, wash hand basin and WC, window to front elevation and heated towel rail.

Bedroom Two

10'10" x 8'8"

Window to rear elevation and radiator.

Bedroom Three

11'9" x 6'8"

Window to rear elevation and radiator.

Bathroom

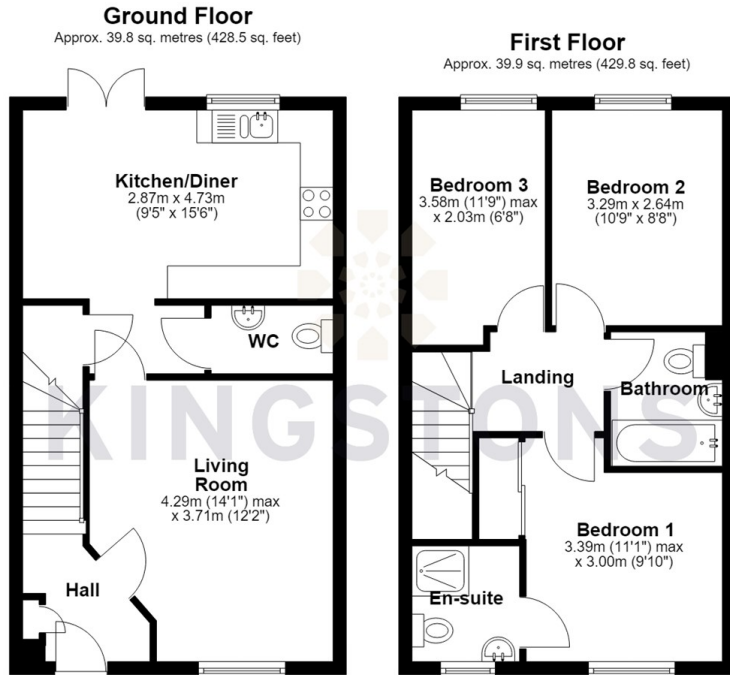
Fitted with three piece suite comprising bath with hand shower attachment, wash hand basin and WC with radiator.

Outside

Two parking spaces to the front of the property and enclosed rear garden with side access.



Local Authority **Wiltshire**
Council Tax Band **C**
EPC Rating **B**



Total area: approx. 79.7 sq. metres (858.3 sq. feet)




KINGSTONS
Melksham Office

11 High Street, Melksham,
Wiltshire, SN12 6JR

Contact

01225709115
sales@kingstons.biz
www.kingstons.biz

Agents Note: Whilst every care has been taken to prepare these particulars, they are for guidance purposes only. All measurements are approximate and for general guidance purposes only and whilst every care has been taken to ensure accuracy, they should not be relied upon and potential buyers/tenants are advised to recheck the measurements.