



Moulding Lane, SE14

£550,000

Set within the highly desirable Moulding Lane development, this rarely available ground-floor apartment offers two spacious double bedrooms and is presented in immaculate condition throughout.

An inviting entrance hall leads into a bright, open-plan kitchen/reception room, with a contemporary kitchen offering ample dining space and direct access to a private outdoor space.

The principal bedroom benefits from a stylish en-suite shower room, complemented by a modern family bathroom.

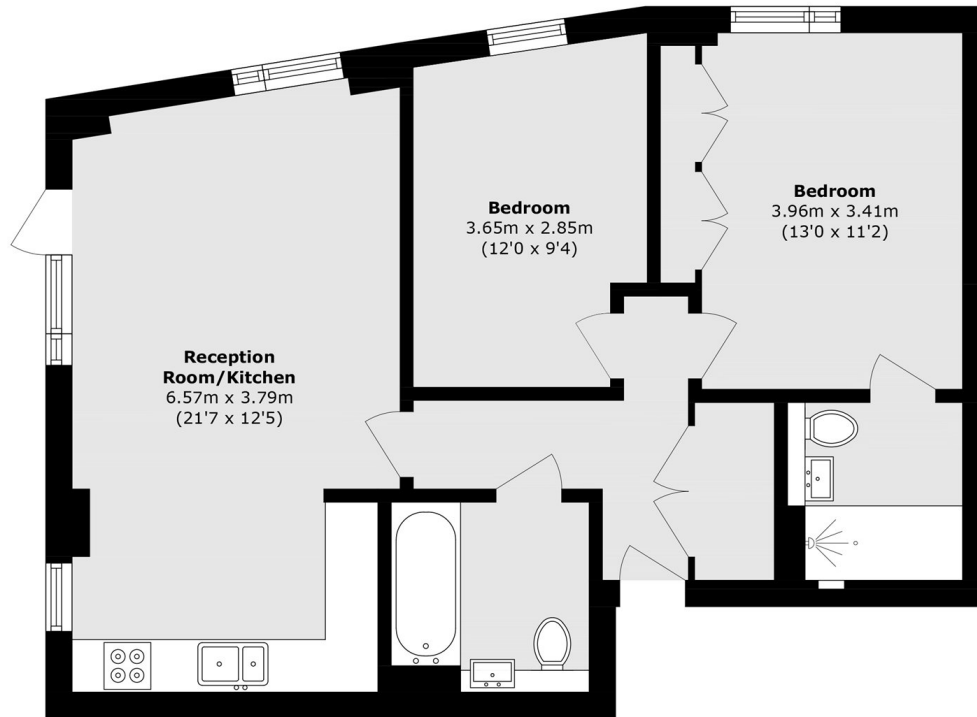
Externally, the property features an exceptional wrap-around private outdoor space, significantly larger than average within the development.

Moulding Lane is situated in the heart of New Cross with an eclectic mix of bars, restaurants, and independent coffee shops on your doorstep. New Cross, Deptford and Deptford Bridge DLR are all within reach.

Features

- Ground Floor
- Two Double Bedrooms
- Two Bathrooms
- Concierge
- Cycle Storage
- Wrap Around Garden

Moulding Lane, London, SE14



Total area (approx.): 67.7 sq. m (728.7 sq. ft)