



Wellway Court | Morpeth | NE61 1BW

Asking Price £185,000

RMS | Rook
Matthews
Sayer



2



1



2

Immaculately Presented Apartment

Modern Kitchen

Two Bedrooms

Bright and Airy Rooms

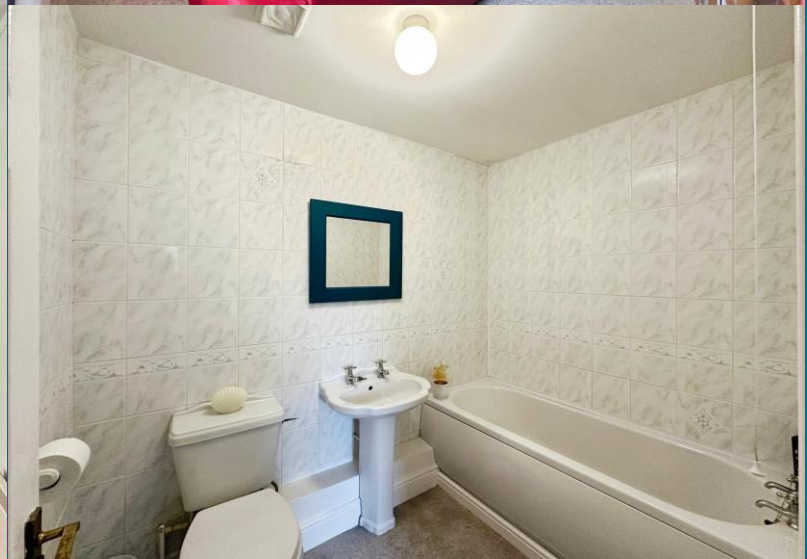
Amazing Town Centre Location

Private Allocated Parking

Beautifully Upgraded

Leasehold

For any more information regarding the property please contact us today



T: 01670 511 711

morpeth@rmsestateagents.co.uk

RMS | Rook
Matthews
Sayer

Location, location, location! This immaculately presented, two bedroomed first floor apartment, is nestled within the heart of Morpeth town centre. Surrounded by fantastic river walks, an array of local bars and restaurants, well-regarded schools like Morpeth First School and King Edward VI High School and fantastic shopping delights all on your doorstep! This idyllic apartment has been beautifully upgraded by its current owner, whilst also offering private allocated parking, which is a real rarity to find such a gem in the centre of town.

The property briefly comprises:- Entrance hallway, leading into a spacious bright and airy lounge, with floods of natural light, due to the two large windows and complimented with fresh white walls. The kitchen has been fitted with a range of modern wall and base units, offering an abundance of storage. Integrated appliances include a fridge, electric oven/hob and washing machine. You further benefit from a fabulous, picture-perfect view of Morpeth from the kitchen.

To the opposite end of the living space, you are presented with two generous sized bedrooms, both of which have been carpeted throughout and finished with modern décor. The master bedroom benefits from its own en-suite shower room, whilst bedroom two comes with large fitted wardrobes, offering excellent storage. The family bathroom has been finished with W.C, hand basin, bath and shower over bath.

Externally to the front of the property, you have a private allocated parking space which is very hard to find in this location.

A must view to appreciate the space on offer.

MEASUREMENTS

Lounge: 15'4 x 12'1 (4.67m x 3.68m)
Kitchen: 10'6 x 10'3 (3.20m x 3.12m)
Bedroom One: 15'2 x 8'10 (4.62m x 2.69m)
En-suite: 9'11 x 4'2 (3.02m x 1.27m)
Bedroom Two: 10'3 x 9'4 (3.12m x 2.84m)
Bathroom: 7'10 x 5'7 (2.39m x 1.70m)

PRIMARY SERVICES SUPPLY

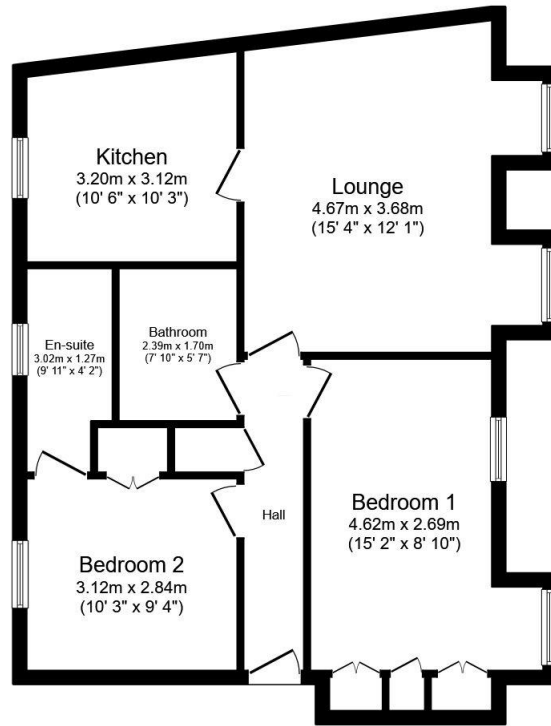
Electricity: Mains
Water: Mains
Sewerage: Mains
Heating: Electric
Broadband: Fibre to Cabinet
Mobile Signal / Coverage Blackspot: No
Parking: Allocated Parking Space

TENURE

Leasehold - It is understood that this property is leasehold, but should you decide to proceed with the purchase of this property, the Tenure must be verified by your Legal Adviser. Length of Lease: 999 years from 09/07/1999

EPC Rating: C
Council Tax Band: D

M00008880.AB.JD.10/04/2026.V.2



First Floor

Floor area 68.6 sq.m. (738.3 sq.ft.)

Total floor area: 68.6 sq.m. (738.3 sq.ft.)

This floor plan is for illustrative purposes only. It is not drawn to scale. Any measurements, floor areas (including any total floor area), openings and orientations are approximate. No details are guaranteed, they cannot be relied upon for any purpose and do not form any part of any agreement. No liability is taken for any error, omission or misstatement. A party must rely upon its own inspection(s). Powered by www.Propertybox.io

Score	Energy rating	Current	Potential
92+	A		
81-91	B		
69-80	C	72 C	77 C
55-68	D		
39-54	E		
21-38	F		
1-20	G		

Important Note: Rook Matthews Sayer (RMS) for themselves and for the vendors or lessors of this property, whose agents they are, give notice that these particulars are produced in good faith, are set out as a general guide only and do not constitute part or all of an offer or contract. The measurements indicated are supplied for guidance only and as such must be considered incorrect. Potential buyers are advised to recheck the measurements before committing to any expense. RMS has not tested any apparatus, equipment, fixtures, fittings or services and it is the buyer's interests to check the working condition of any appliances. RMS has not sought to verify the legal title of the property and the buyers must obtain verification from their solicitor. No persons in the employment of RMS has any authority to make or give any representation or warranty whatever in relation to this property.

Money Laundering Regulations - intending purchasers will be asked to produce original identification documentation at a later stage and we would ask for your co-operation in order that there will be no delay in agreeing the sale. We will also use some of your personal data to carry out electronic identity verification. This is not a credit check and will not affect your credit score.

