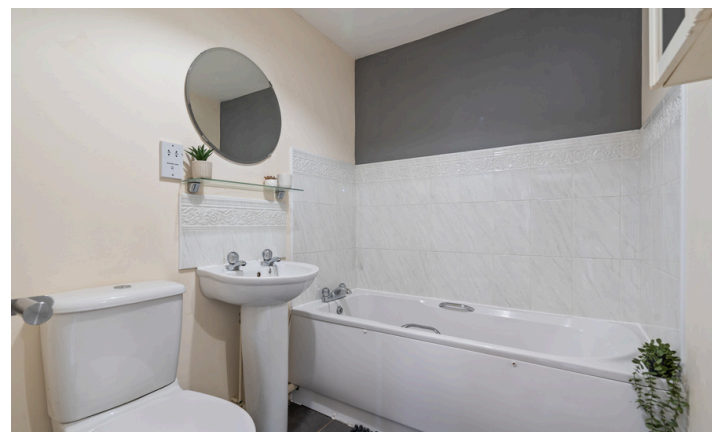


Need a Mortgage in principle to make offers? Call us now for quick assistance!
0121 775 0101



Do you need to sell? Start your journey now! Call us we can help.
0121 775 0101



21 Priory Gardens

Hall Green, B28 0TQ
Asking Price £155,000

SCAN FOR MORE INFO

SIZE - 624 Sq Ft
TENURE - Leasehold with 102 years remaining
SERVICE CHARGE - £1,900 p.a.
GROUND RENT - £100 p.a.
COUNCIL TAX - Birmingham City Council - B.
BROADBAND - Upload Max 15Mbps Download Max 75Mbps
MOBILE SERVICES - EE - 88%, Three - 88%, O2 - 75%, Vodafone - 84%
EPC - C - 79
PARKING - Allocated parking space
FLOODRISK - Very Low
SERVICES - Mains
COVENANTS - Yes - speak to agent

A well-presented second floor apartment situated on a modern development in a popular and convenient location. The property enjoys lovely open views to the front and is also within walking distance of Yardley Wood Train Station. Offered with no upward chain, it presents a fantastic opportunity for first time buyers, investors or those looking to downsize. Competitively priced, early viewing is strongly recommended.

FEATURES

- Two Bedroom Modern Second Floor Apartment
- Well Located with Lovely Open Views to the Front
- No Upward Chain
- Good Sized Lounge
- Spacious Dining Kitchen with Integrated Appliances
- Principal Bedroom with En-Suite Shower Room
- Further Family Bathroom
- Communal Gardens
- Allocated Parking
- Fantastic First Time Buyer or Buy to Let Investment

Are you an investor interested in expanding your portfolio?

Call 0121 775 0101 to provide your investment criteria for alerts.



SCAN TO VIEW OUR WEEKLY FILMS & SUBSCRIBE

Sneak Peeks

Every week, we unveil "Sneak Peeks," a feature showcasing exclusive properties before they hit Rightmove and other platforms.

The Landlord Club

Join our Landlord Club for weekly updates on legislation, market trends, and our Letting Director's 'Investment Pick of the Week' for optimal ROI.

HTSPMD

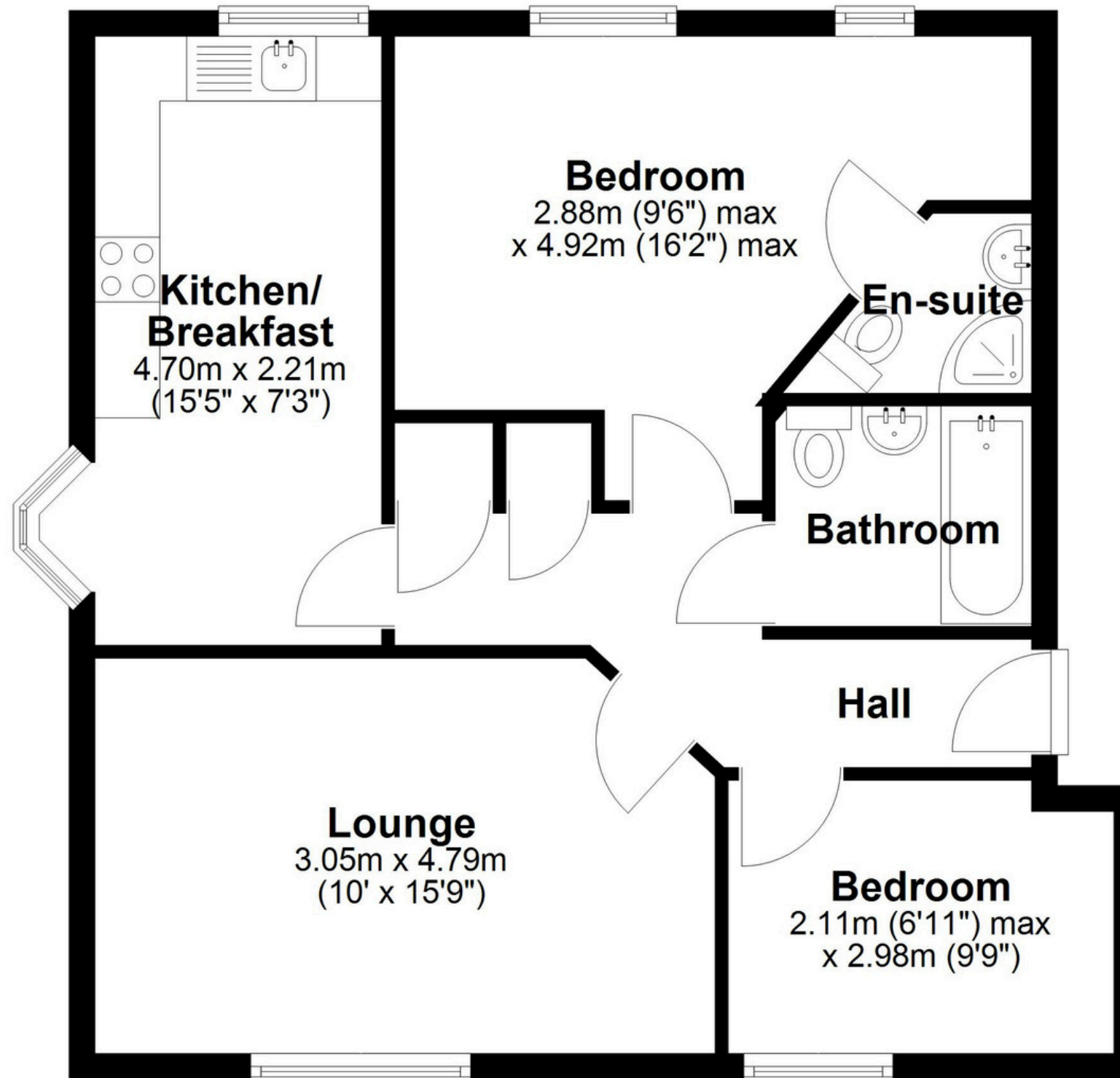
Tune into 'How's The Solihull Property Market Dom' weekly for a quick, insightful snapshot of the market.

The Mortgage Update

Get weekly insights and the best deals with our Mortgage Update, your shortcut to navigating the complex mortgage landscape confidently.

Floor Plan

Approx. 58.0 sq. metres (624.5 sq. feet)



Total area: approx. 58.0 sq. metres (624.5 sq. feet)

This floor plan is for illustration purposes only, this is not intended to be a measured/scaled survey or comply with RICS guidelines. All measurements (including total floor area) openings, orientation and floor area are approximate. No details are guaranteed, they cannot be relied upon for any purpose and do not form part of any agreement. A party must rely upon its own inspection(s). No responsibility is taken for any error, omission, or mis-statement.

Plan produced using PlanUp.